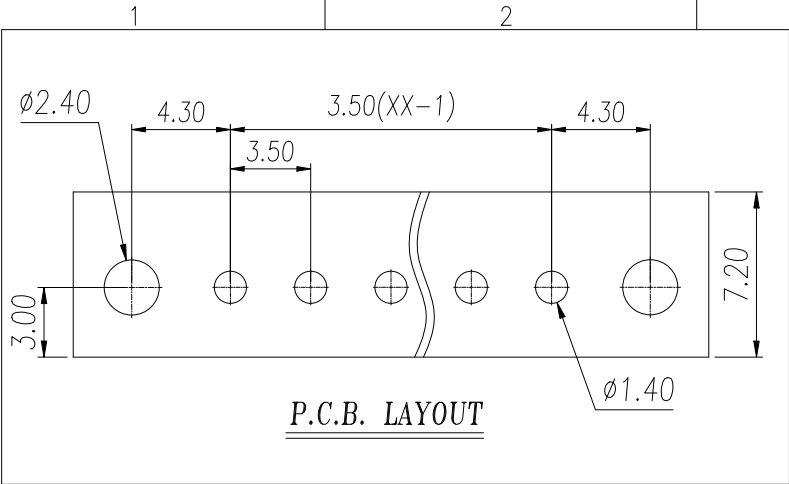
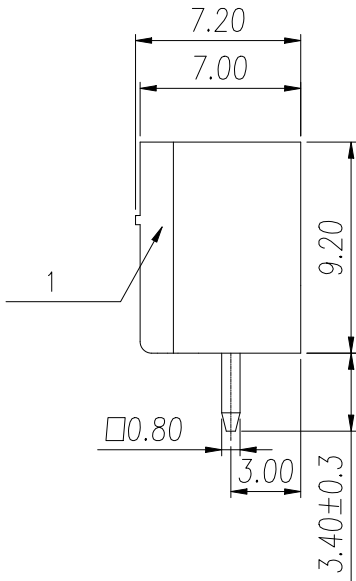




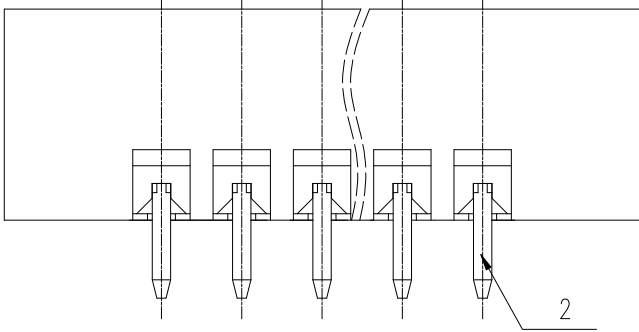
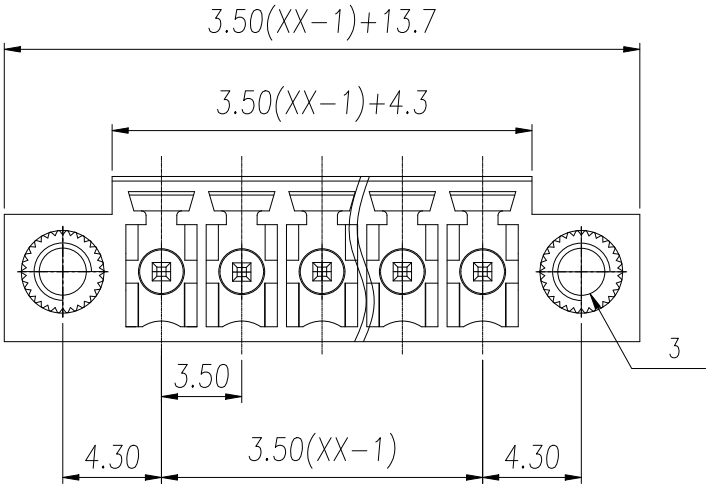
Transfer or duplication of this document as well as the utilization or communication of its contents are prohibited unless explicit authorization is granted. Violations will be liable for compensation. All rights reserved for patent, utility model or designs registrations. 除丰给予明确授权，否则禁止转让、复制、利用、交流本文件的内容。侵犯者将负赔偿责任。未经许可擅自复制、使用、交流本文件的所有权利。



P.C.B. LAYOUT

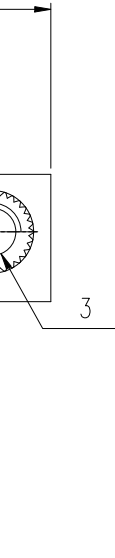


General Tolerances								—		
variable range	to 6	over 6 to 10	over 10 to 30	over 30 to 60	over 60 to 100	over 100 to 160	over 160 to	to 10	over 10 to 100	over 100 to
tolerance	±0.20	±0.30	±0.50	±0.70	±1.00	±1.30	±1.60	0.10	0.30	0.60



3	Nut	Copper Alloy	M2.5
2	Pin	Copper Alloy	Sn Plated
1	Housing	PA66	UL94V-0
ITEM	NAME OF PART	MATERIAL	NOTES

DES.	YaoFei	DATE	23.11.24	UNITS	mm	THIRD ANGLE PROJECTION	⊕
CHK.	YangHJ	DATE	23.11.24	SIZE	A4	TYPE: CUSTOMER DRAWING	SHEET 1 of 1
APP.	JASON	DATE	23.11.24	SCALE	3: 1	DRAWING TYPE: SP-03	REV 0
慈溪市万捷电子有限公司 CIXI WANJIE ELECTRONIC CO., LTD						PART NO.: WJ15EDGVM-3.5-XXP-1Y-00A	

REVISION RECORD							
REV.	DESCRIPTION		ECN No.	APPROVED	DATE		
0	新发行			YaoFei	23.11.24		
			UL/CUL 技术参数				
			UL/CUL Technical Data			UL1059	
			等 级	Use Group	B	C	D
			额定电压	Rated Voltage [V]	300	-	300
			额定电流	Rated Current [A]	8	-	8
			接线范围	Wire Range	-		
			单/多芯线	Solid/Stranded [AWG]			
			耐电压	Withstanding Voltage	1600V/1Min		
			IEC 技术参数			IEC 61984	
			IEC Technical Data				
			过电压类别	Overvoltage Category	III	III	II
			污染等级	Contamination Class	3	2	2
			额定电压	Rated Voltage [V]	160	160	250
			额定电流	Rated Current [A]	7	7	7
			额定冲击电压	Impulse withstand voltage [KV]	2.5	2.5	2.5
导线截面积			Conductor cross section				
硬质/柔性导线			Solid/ flexible [mm²]				
一般参数			Other Data				
间距			Pitch [mm]				
极数			Poles [P]				
工作温度			Operating temperature [°C]				
符合RoHS环保要求							