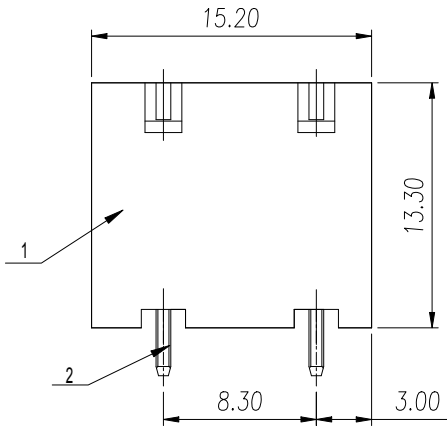
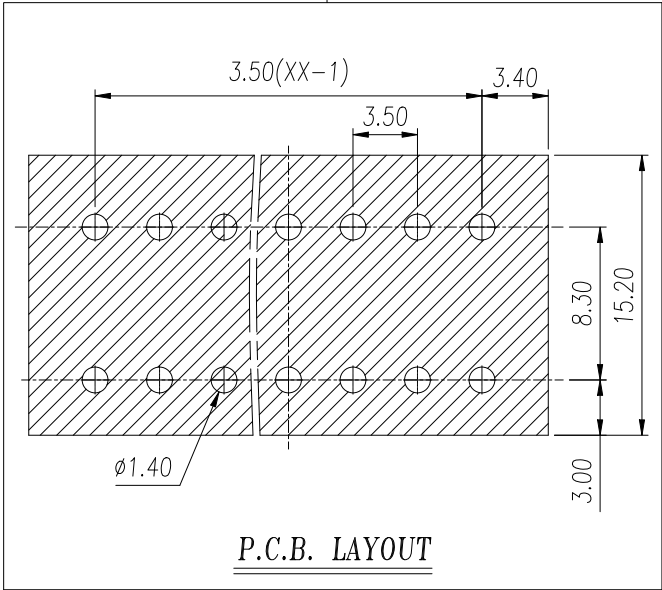
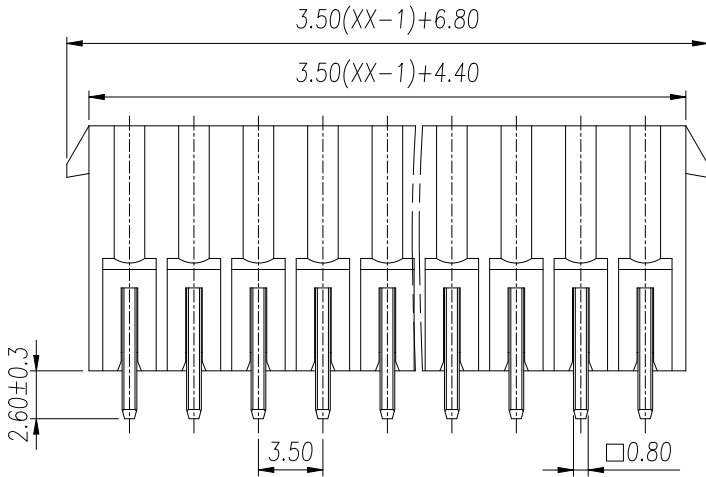
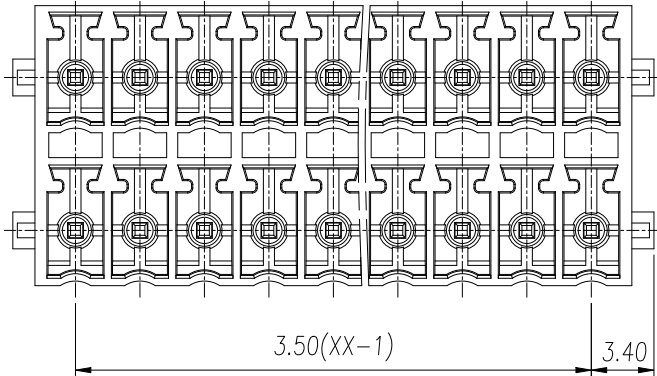


Transfer or duplication of this document as well as the utilization or communication of its contents are prohibited unless explicit authorization is granted. Violations will be liable for compensation. All rights reserved for patent, utility model or designs registrations. 除丰给予明确授权, 否则禁止转让、复制、利用、交流本文件的内容。侵犯者将承担赔偿责任。 实用新型和外观设计专利的所有权利。



General Tolerances								— □ ⊥		
variable range	to 6	over 6 to 10	over 10 to 30	over 30 to 60	over 60 to 100	over 100 to 160	over 160 to	to 10	over 10 to 100	over 100 to
tolerance	±0.20	±0.30	±0.50	±0.70	±1.00	±1.30	±1.60	0.10	0.30	0.60



2	Pin	Copper Alloy	Sn Plated
1	Housing	LCP	UL94V-0
ITEM	NAME OF PART	MATERIAL	NOTES

REVISION RECORD				
REV.	DESCRIPTION	ECN No.	APPROVED	DATE
0	新发行		YaoFei	24.01.18
<div>UL/CUL 技术参数 UL/CUL Technical Data</div> <div>等级 Use Group B C D</div> <div>额定电压 Rated Voltage [V] 300 - -</div> <div>额定电流 Rated Current [A] 8 - -</div> <div>接线范围 Wire Range 单/多芯线 Solid/Stranded [AWG] -</div> <div>耐电压 Withstanding Voltage 1600V/1Min</div> <div>IEC 技术参数 IEC Technical Data IEC61984</div> <div>过电压类别 Overvoltage Category III III II</div> <div>污染等级 Contamination Class 3 2 2</div> <div>额定电压 Rated Voltage [V] 160 160 250</div> <div>额定电流 Rated Current [A] 8 8 8</div> <div>额定冲击电压 Impulse withstand voltage [KV] 2.5 2.5 2.5</div> <div>导线截面积 Conductor cross section 硬质/柔性导线 Solid/flexible [mm²] -</div> <div>一般参数 Other Data</div> <div>间距 Pitch /极数 Poles [mm] / [P] 3.5 / 2*02~2*24</div> <div>工作温度 Operating temperature [°C] -40~130</div> <div>焊锡温度 Soldering temperature 285°C/10S</div> <div>引针尺寸 Pin Dimensions [mm] 0.8*0.8</div> <div>PCB板孔径 PCB Hole Diameter [mm] Ø1.4</div> <div>符合RoHS环保要求</div>				
<div>DES. YaoFei DATE 24.01.18 UNITS mm THIRD ANGLE PROJECTION</div> <div>CHK. YangHJ DATE 24.01.18 SIZE A4 TYPE: CUSTOMER DRAWING SHEET 1 of 1</div> <div>APP. JASON DATE 24.01.18 SCALE 2:1 DRAWING TYPE: SP-03 REV 0</div> <div><div>WJ 慈溪市万捷电子有限公司 CIXI WANJIE ELECTRONIC CO., LTD</div><div>PART NO.: WJ15EDGVHBN-THT-3.5-2*XXP-1Y-00A</div></div>				