



PCB connector

Rated current: 15 A

Rated voltage: 300 V

Wire range: 28-12 AWG

Pitch: 5.0 mm/5.08 mm



For reference only!version1.0

UL/CUL

| Use Group | B | C | D |
|------------------------------|-------|---|-----|
| Rate Voltage [V] | 300 | - | 300 |
| Rated Current [A] | 15 | - | 10 |
| Wire Range [AWG] | 28-12 | | |
| Dielectric Voltage-Withstand | 1.6KV | | |

IEC

| Overvoltage Category | III | III | II |
|---|---------|-----|-----|
| Contamination Class | 3 | 2 | 2 |
| Rated Voltage [V] | 250 | 320 | 630 |
| Rated Current [A] | 12 | 12 | 12 |
| Impulse withstand voltage [KV] | 4 | 4 | 4 |
| Conductor cross section[solid/flexible] [mm²] | 0.2-2.5 | | |

Material

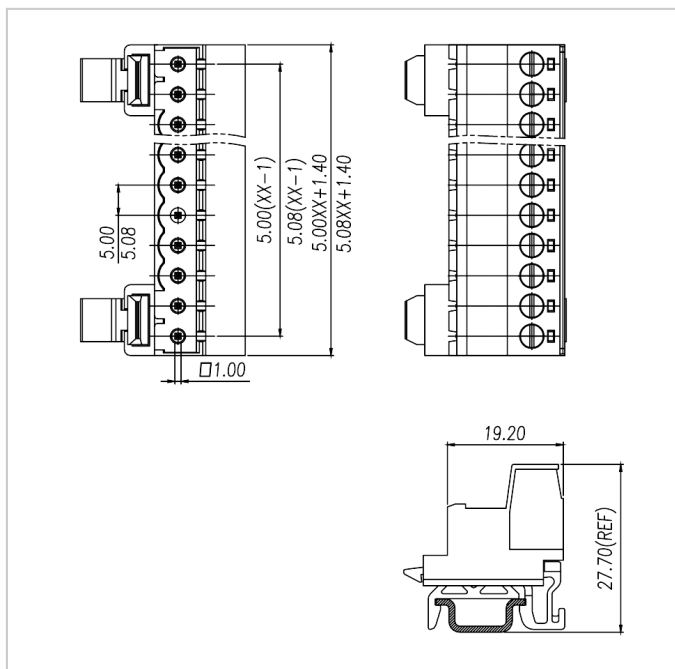
| | |
|---------------------|------|
| Insulation Material | PA66 |
|---------------------|------|

| | |
|------------------------------|--------------|
| Flame retardant rating | UL94V-0 |
| Conductor Material | Copper alloy |
| Plating of conductor surface | Sn plated |

Other Data

| | |
|----------------------------|-----------------|
| Pitch/Poles [mm]/[P] | 5.0 , 5.08/2-24 |
| Stripping Length [mm] | 7-8 |
| Screw/Torque(Max)[N.m] | M3/0.5 |
| Operating temperature [°C] | -40~+105 |
| Soldering temperature | / |
| Pin dimensions [mm] | / |
| PCB Hole Diameter [mm] | / |

Dimensions



Accessories



[WJ2EDGK-5.0/5.08](#)



[WJ2EDGKA-5.0/5.08](#)



[WJ2EDGKB-5.0/5.08](#)



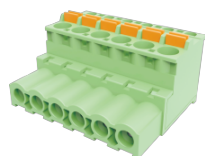
[WJ2EDGKC-5.0/5.08](#)



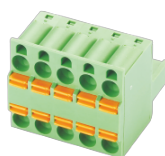
[WJ2EDGKD-5.0/5.08](#)



[WJ2EDGKDA-5.0/5.08](#)



[WJ2EDGKDB-5.0/5.08](#)



[WJ2EDGKDH-5.08](#)



[WJ2EDGKF-5.0](#)



[WJ2EDGKH-5.08](#)



[WJ2EDGKAH-5.08](#)



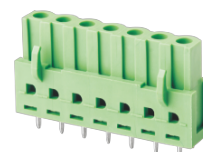
[WJ2EDGKZ-5.0/5.08](#)



[WJ2EDGKL-5.0/5.08](#)



[WJ2EDGA-5.0/5.08](#)



[WJ2EDGB-5.0/5.08](#)