

PCB connector  
 Rated current: 8 A  
 Rated voltage: 300 V  
 Wire range: 28-16 AWG  
 Pitch: 3.81 mm



For reference only!version1.0

**UL/CUL**

Use Group	B	C	D
Rate Voltage [V]	300	-	300
Rated Current [A]	8	-	8
Wire Range [AWG]	28~16		
Dielectric Voltage-Withstand	1.6KV		

**IEC**

Overvoltage Category	III	III	II
Contamination Class	3	2	2
Rated Voltage [V]	160	160	320
Rated Current [A]	8	8	8
Impulse withstand voltage [KV]	2.5	2.5	2.5
Conductor cross section[solid/flexible] [mm²]	0.2~1.5		

**Material**

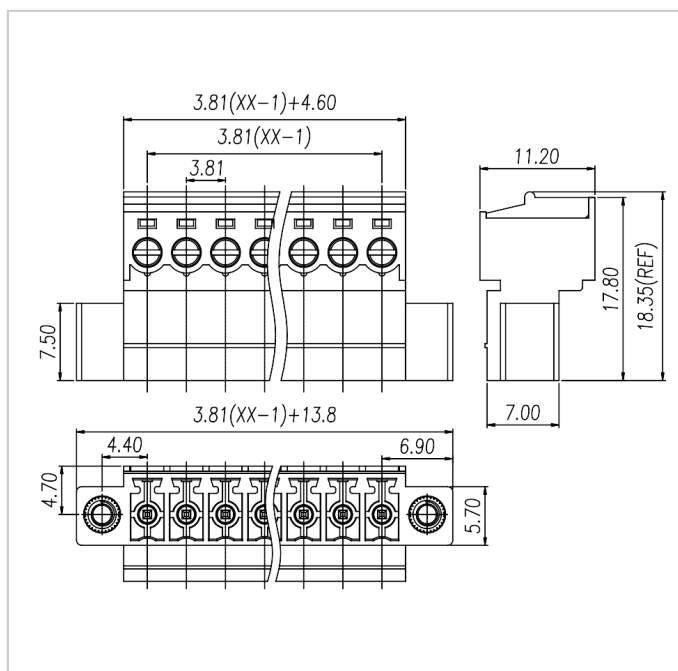
Insulation Material	PA66
---------------------	------

Flame retardant rating	UL94V-0
Conductor Material	Copper alloy
Plating of conductor surface	Sn plated

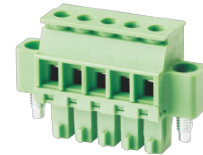
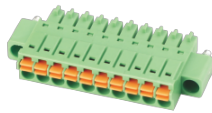
### Other Data

Pitch/Poles [mm]/[P]	3.81/2~24
Stripping Length [mm]	6-7
Screw/Torque(Max)[N.m]	M2/0.2
Operating temperature [°C]	-40~+105
Soldering temperature	/
Pin dimensions [mm]	/
PCB Hole Diameter [mm]	/

### Dimensions



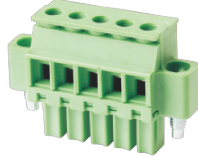
### Accessories



[WJ15EDGKNM-3.5/3.81](#)

[WJ15EDGKM-3.5/3.81](#)

[WJ15EDGKAM-3.5/3.81](#)



[WJ15EDGKBM-3.5/3.81](#)

[WJ15EDGKCM-3.81](#)

[WJ15EDGKDM-3.5/3.81](#)

[WJM02-3.81](#)