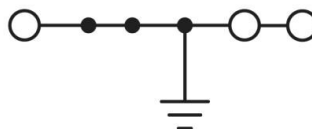


Electrical Diagram :



For reference only!version1.0

CUL Technical Data (UL1059)

Use Group	B	C	D
Rated Voltage [V]	/	/	/
Rated Current [A]	/	/	/
Withstanding Voltage		/	
Wire Range	24-6AWG		

IEC Technical Data (IEC 60947-7-2)

Overvoltage Category	III
Contamination Class	3
Rated Voltage	/
Rated Current	/
Impulse withstand voltage	8KV

Conductor cross section

Soild	0.2-6.0mm ²
Flexible	0.2-10.0mm ²
Flexible with ferrule	0.25-10.0mm ²

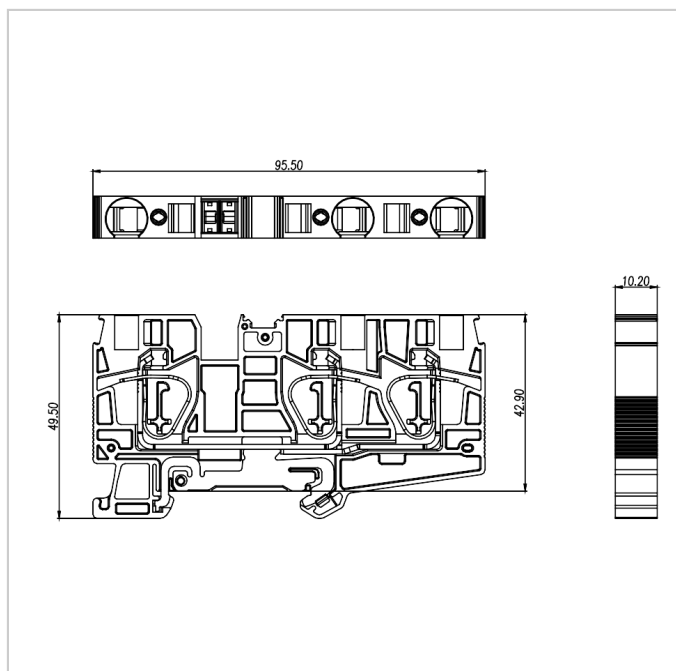
Material

Insulation Material	PA66
Flame retardant rating	UL94V-0
Conductor Material	Copper alloy
Plating of conductor surface	Sn plated

Other Data

Length/Height/Thickness [mm]	95.5/49.5/10.2
Connection Points	3
Stripping Length [mm]	18
Type of rail	DIN 35
Screw/Torque(Max)[N.m]	/
Operating temperature [°C]	-40~+105

Dimensions



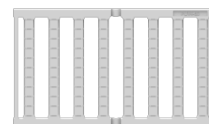
Accessories



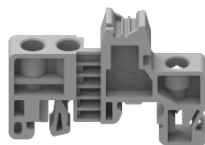
[FUVA10-XX](#)



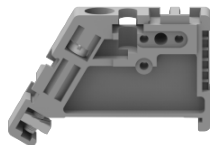
[MUV10-10](#)



[PUV10-48](#)



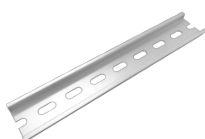
[EB-35](#)



[EW-35](#)



[DGL2-35x7.5A](#)



[DGL2-35x7.5B](#)



[DGL2-35x7.5C](#)



[DGL2-35x7.5D](#)



[DUS10-103](#)



[DGS1-35x7.5W4.2x12](#)



[DGS1-35x7.5W5.2x15](#)



[DGS1-35x7.5W](#)