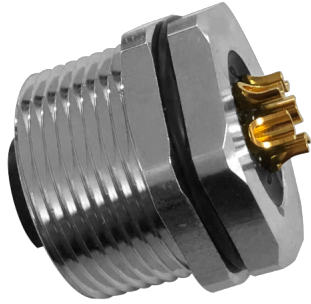


7/8" 母头面板式，焊接型，前锁安装



目录仅供参考，实际规格依产品工程图为准 版本1.0

连接器系列 Connector Series: 7/8"

| | |
|--------------------|---------------------|
| 类型 Gender | Female 母 |
| 编码 Coding | A |
| 装配方式 Locking Type | Fix Screw 锁螺丝 |
| 安装类型 Mounting Type | Front Fastened 前锁 |
| 产品编码 Part No | M87-A**-ST0-F02-BQ2 |

技术参数 Technical Data

| | |
|----------------------------|--------------------|
| 工作温度 Ambient Temperatur | -25°C~+85°C |
| 绝缘电阻 Insulation Resistance | ≥100MΩ |
| 接触电阻 Contact Resistance | ≤5mΩ |
| 防护等级 IP Class | IP67 |
| 机械寿命 Mating Endurance | >100 Mating Cycles |

材质说明 Material Data

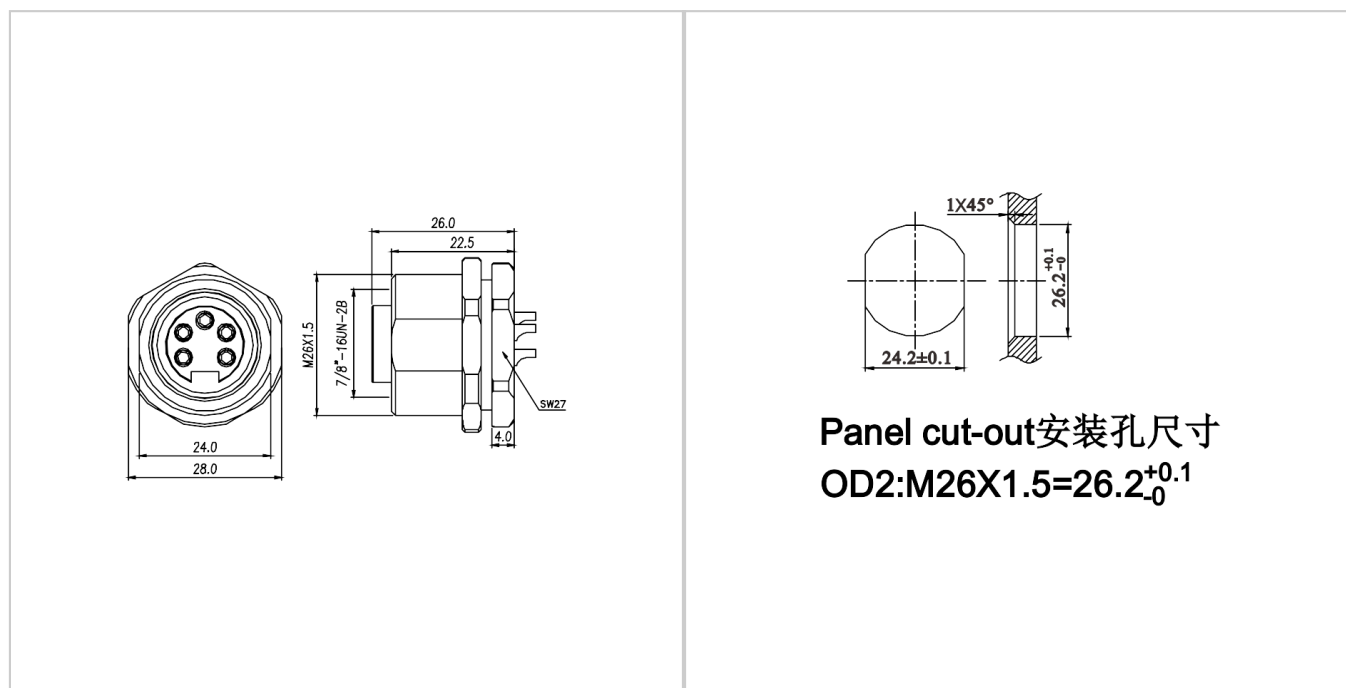
| | |
|---------------------------|-------------------------------------|
| 胶芯材料 Connector Carriers | PA |
| 接触端子 Connector Contacts | Copper Alloy With Gold Plated 铜镀金 |
| 螺母/螺丝 Connector Nut/Screw | Copper Alloy With Nickel Plated 铜镀镍 |
| 屏蔽 Shielding | Unshielded 非屏蔽 |
| 密封胶圈 Seal/O-Ring | FKM 氟橡胶 |

电气参数&机械参数 Electrical Data & Mechanical Date

| | | | | |
|-------------------------------------|---------|----|----|---|
| Pin数 Contacts Pin [Pins] | 2 | 3 | 4 | 5 |
| 额定电流 Rated Current [A] | 13 | 13 | 13 | 8 |
| 电压 Voltage AC/DC [V] | 300/300 | | | |
| 接线范围 Wire Range AWG/mm ² | 18/1.0 | | | |

尺寸图

PCB开孔图



适配产品



M87-A**-ST0-M02-BC*-XXX



M87-A**-RA0-M02-BC*-XXX



M87-A**-ST0-MF2-BT*-XXX



M87-A**-ST0-MF2-BTF