

额定电流: 30A

额定电压: 600V

使用线径: 24-10AWG



目录仅供参考，实际规格依产品工程图为准 版本1.0

### 技术数据-UL ( 1059 )

| 等级 Use Group           | B       | C   | D   |
|------------------------|---------|-----|-----|
| 额定电压 Rate Voltage [V]  | 600     | 600 | 600 |
| 额定电流 Rated Current [A] | 30      | 30  | 5   |
| 接线范围 Wire Range [AWG]  | 24 ~ 10 |     |     |

### 技术参数-IEC ( 60947-7-1 )

|   |         |
|---|---------|
| 额定电压 Rated Voltage [V]                            | 800     |
| 额定电流 Rated Current [A]                            | 32      |
| 单芯 Solid [mm <sup>2</sup> ]                       | 0.2-6.0 |
| 柔性导线 Flexible [mm <sup>2</sup> ]                  | 0.2-4.0 |
| 柔性导线带冷压头 Flexible with ferrule [mm <sup>2</sup> ] | 0.2-4.0 |
| 过电压类别 Overvoltage Category                        | III     |

|                                       |   |
|---------------------------------------|---|
| 污染等级 Contamination Class              | 3 |
| 额定冲击电压 Impulse withstand voltage [KV] | 8 |

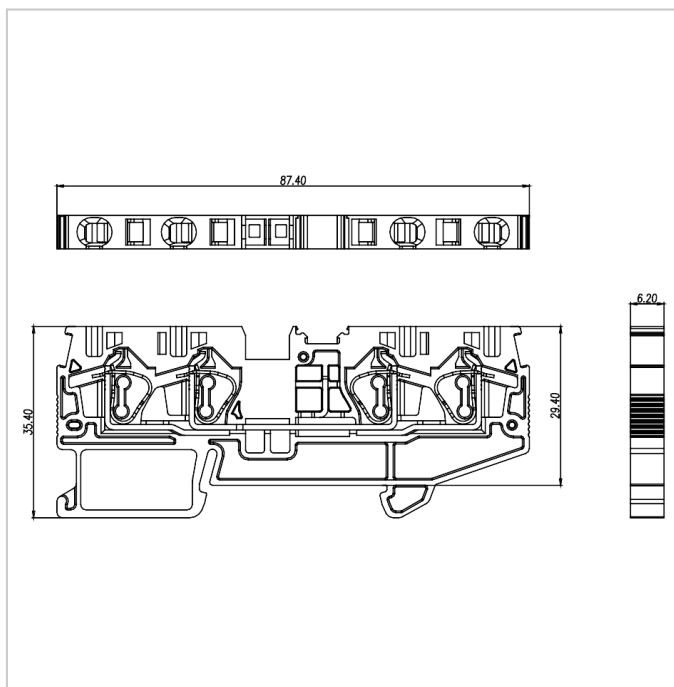
### 材料 Material

|                                     |              |
|-------------------------------------|--------------|
| 绝缘材料 Insulation Material            | PA66         |
| 阻燃等级 Flame retardant rating         | UL94V-0      |
| 导体材料 Conductor Material             | Copper alloy |
| 导体表面镀层 Plating of conductor surface | Sn plated    |

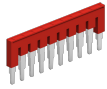
### 一般参数 Other Date

|                                    |               |
|------------------------------------|---------------|
| 长/高/厚 Length/Height/Thickness [mm] | 87.4/35.4/6.2 |
| 剥线长度 Stripping Length [mm]         | 8-10          |

### 尺寸图



### 适配产品



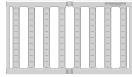
FUVA4-XX



DUS4-104



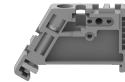
MUV4-10



PUV4-80



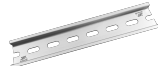
EB-35



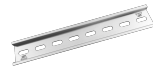
EW-35



DGL2-35x7.5A



DGL2-35x7.5B



DGL2-35x7.5C



DGL2-35x7.5D