

插拔式连接器  
 额定电流: 10A  
 额定电压: 300V  
 使用线径: 28-16AWG  
 间距:3.5mm  
 安装: 直插式弹簧连接



目录仅供参考，实际规格依产品工程图为准 版本1.0

### 技术数据-UL/CUL

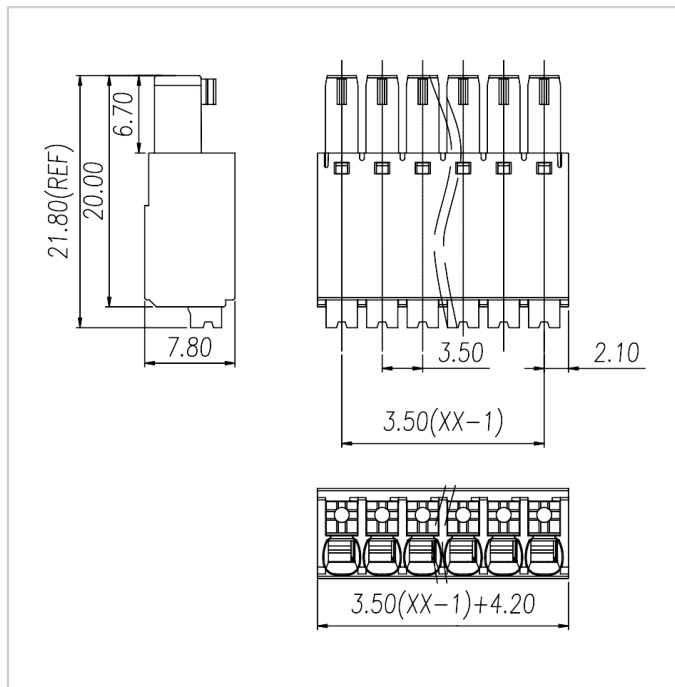
| 等级 Use Group                     | B     | C | D   |
|----------------------------------|-------|---|-----|
| 额定电压 Rate Voltage [V]            | 300   | - | 300 |
| 额定电流 Rated Current [A]           | 10    | - | 10  |
| 接线范围 Wire Range [AWG]            | 28-16 |   |     |
| 耐电压 Dielectric Voltage-Withstand | 1.6KV |   |     |

### 技术参数-IEC

| 过电压类别 Overvoltage Category            | III | III | II  |
|---------------------------------------|-----|-----|-----|
| 污染等级 Contamination Class              | 3   | 2   | 2   |
| 额定电压 Rated Voltage [V]                | 160 | 160 | 320 |
| 额定电流 Rated Current [A]                | 10  | 10  | 10  |
| 额定冲击电压 Impulse withstand voltage [KV] | 2.5 | 2.5 | 2.5 |

|   |              |
|---|--------------|
| 导线截面积[硬/柔] Conductor cross section [mm <sup>2</sup> ] | 0.2-1.5      |
| <b>材料 Material</b>                                    |              |
| 绝缘材料 Insulation Material                              | PA66         |
| 阻燃等级 Flame retardant rating                           | UL94V-0      |
| 导体材料 Conductor Material                               | Copper alloy |
| 导体表面镀层 Plating of conductor surface                   | Sn plated    |
| <b>一般参数 Other Date</b>                                |              |
| 间距/极数 Pitch/Poles [mm]/[P]                            | 3.5/2-24     |
| 剥线长度 Stripping Length [mm]                            | 9-10         |
| 螺丝/扭矩 Screw/Torque(Max)[N.m]                          | -            |
| 工作温度 Operating temperature [°C]                       | -40 ~ +105   |

尺寸图



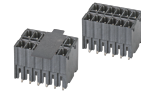
适配产品



WJ15EDGVC-THR-3.5



WJ15EDGRC-THR-3.5



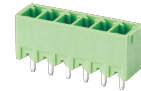
WJ15EDGVHB-THT-3.5



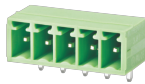
WJ15EDGRHB-THT-3.5



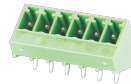
WJ15EDGKNR-3.5



WJ15EDGVC-3.5



WJ15EDGRC-3.5



WJ15EDGLC-3.5