

Rated current: 10A

Rated voltage: 300V

Use wire diameter: 28-16AWG

spacing:3.81mm

Install:



The catalog is for reference only. The actual specifications are subject to the product engineering drawings. version 1.0

技术数据-UL/CUL

等级 Use Group	B	C	D
额定电压 Rate Voltage [V]	300	-	300
额定电流 Rated Current [A]	10	-	10
接线范围 Wire Range [AWG]	28-16		
耐电压 Dielectric Voltage-Withstand	1.6KV		

技术参数-IEC

过电压类别 Overvoltage Category	III	III	II
污染等级 Contamination Class	3	2	2
额定电压 Rated Voltage [V]	160	160	320
额定电流 Rated Current [A]	10	10	10

额定冲击电压 Impulse withstand voltage [KV]	2.5	2.5	2.5
导线截面积[硬/柔] Conductor cross section [mm ²]	0.2-1.5		

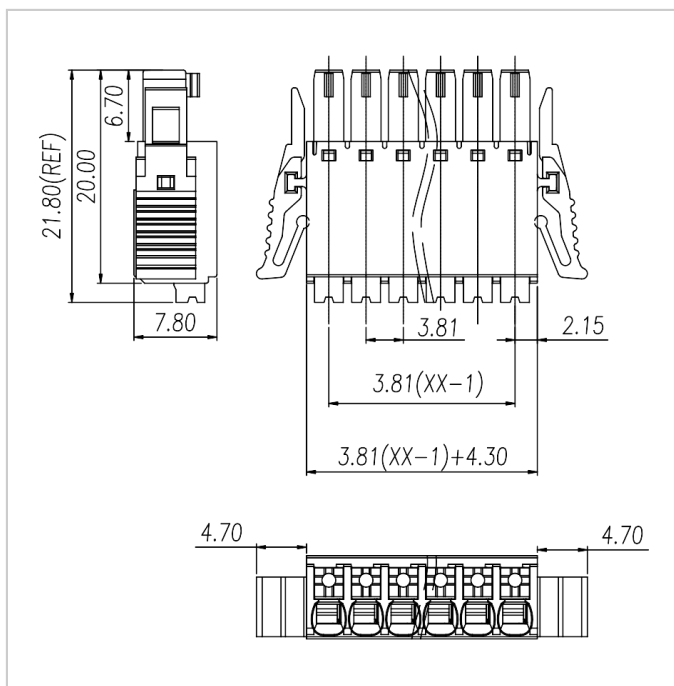
材料 Material

绝缘材料 Insulation Material	PA66
阻燃等级 Flame retardant rating	UL94V-0
导体材料 Conductor Material	Copper alloy
导体表面镀层 Plating of conductor surface	Sn plated

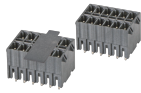
一般参数 Other Date

间距/极数 Pitch/Poles [mm]/[P]	3.81/2-24
剥线长度 Stripping Length [mm]	9-10
螺丝/扭矩 Screw/Torque(Max)[N.m]	-
工作温度 Operating temperature [°C]	-40 ~ +105

Dimensions



Accessories



WJ15EDGVHBN-THT-3.81



WJ15EDGRHBN-THT-3.81



WJ15EDGVG-3.81



WJ15EDGRG-3.81