

Rated current: 25A

Rated voltage: 300V

Use wire diameter: -
spacing:6.35mm

Install: Reflow Soldering

The catalog is for reference only. The actual specifications are subject to the product engineering drawings. version 1.0

UL/CUL

Use Group	B	C	D	F
Rate Voltage [V]	300	300	600	600
Rated Current [A]	25	25	5	25
Wire Range [AWG]	-			
Dielectric Voltage-Withstand	1.6KV			

IEC

Overvoltage Category	III	III	II
Contamination Class	3	2	2
Rated Voltage [V]	630	800	1000
Rated Current [A]	25	25	25

Impulse withstand voltage [KV]	6	6	6
Conductor cross section [mm ²]	-		

Material

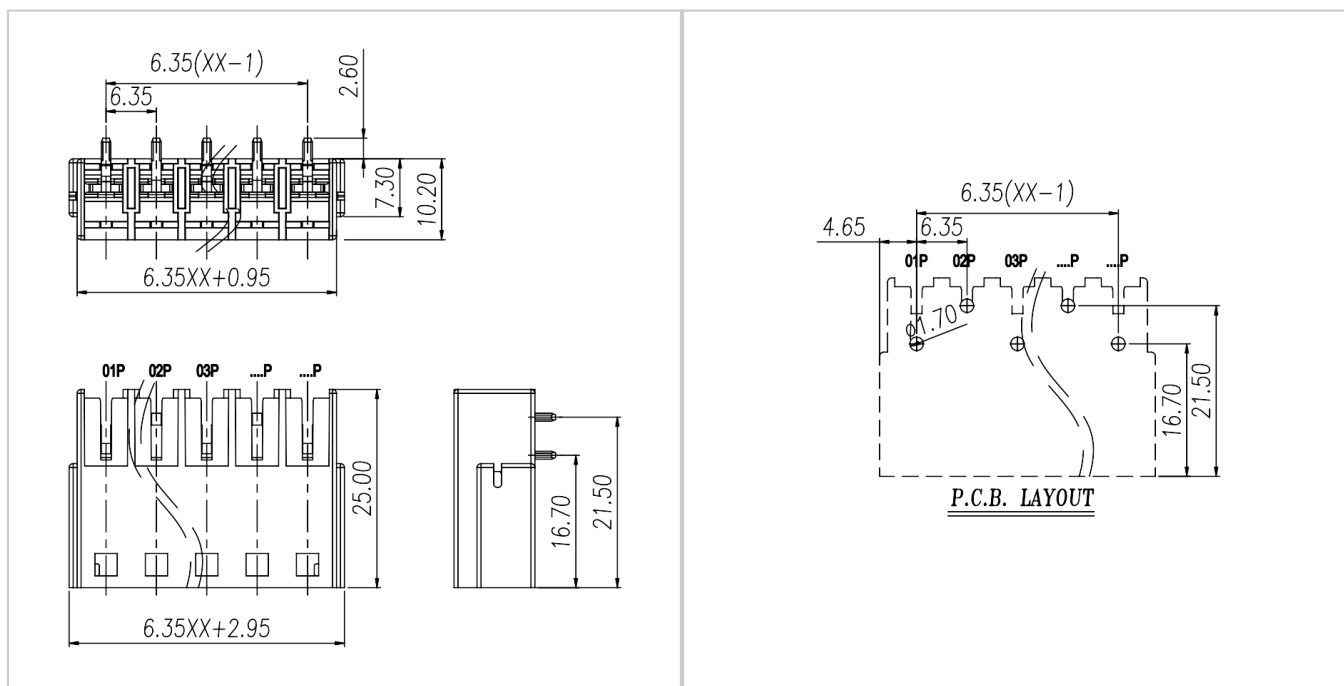
Insulation Material	HIGH-TEMPERATURE PLASTICS
Flame retardant rating	UL94V-0
Conductor Material	Copper alloy
Plating of conductor surface	Sn plated

Other Date

Pitch/Poles [mm]/[P]	6.35/02-20P
Stripping Length [mm]	-
Pin Dimensions [mm]	1.2*1.0
Operating temperature [°C]	-40 ~ +130
Soldering method	Reflow Soldering

Dimensions

PCB hole diagram



Accessories



WJ9KDG-6.35