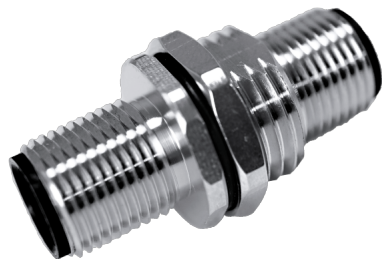


Panel Mount I-Adapter, Male-Male



The catalog is for reference only. The actual specifications are subject to the product engineering drawings. version 1.0

Connector Series: M12

Gender	Male-Male
Coding	A,B,D
Locking Type	Fix Screw
Mounting Type	I-Splitter
Part No	M12-X**-ST2-M02-BM*

Technical Data

Standard	IEC61076
Ambient Temperatur	-25°C~+90°C
Insulation Resistance	≥100MΩ
Contact Resistance	≤5mΩ

IP Class	IP67
Mating Endurance	>100 Mating Cycles

Material Data

Connector Carriers	PA
Connector Contacts	Copper Alloy With Gold Plated
Connector Nut/Screw	Copper Alloy With Nickel Plated
Shielding	Available
Seal/O-Ring	KFM

Electrical Data & Mechanical Date

Contacts Pin [Pins]	3	4	5	8
Rated Current [A]	4	4	4	2
Voltage AC/DC [V]	250/250	250/250	60/60	30/30

Dimensions

