

Rated current: 7A

Rated voltage: 150V

Use wire diameter: 28-18AWG

spacing:3.5mm

Install:



The catalog is for reference only. The actual specifications are subject to the product engineering drawings. version 1.0

### UL/CUL

Use Group	B	C	D
Rate Voltage [V]	150	-	150
Rated Current [A]	7	-	7
Wire Range [AWG]	28-18		
Dielectric Voltage-Withstand	1.3KV		

### IEC

Overvoltage Category	III	III	II
Contamination Class	3	2	2
Rated Voltage [V]	80	160	200
Rated Current [A]	10	10	10

Impulse withstand voltage [KV]	1.5	2.5	2.5
Conductor cross section [mm <sup>2</sup> ]	0.2-1.0		

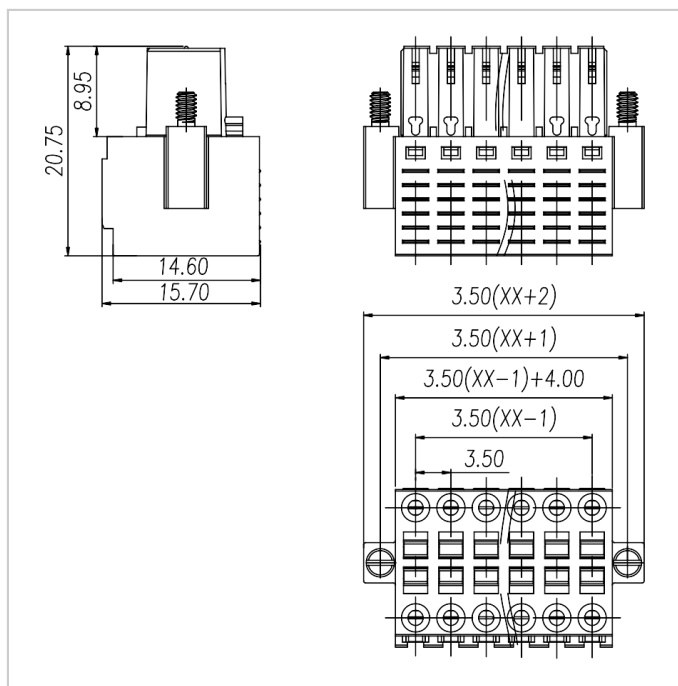
### Material

Insulation Material	PA66
Flame retardant rating	UL94V-0
Conductor Material	Copper alloy
Plating of conductor surface	Sn plated

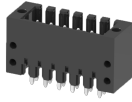
### Other Date

Pitch/Poles [mm]/[P]	3.5/2*2-2*24
Stripping Length [mm]	7-8
Screw/Torque(Max)[N.m]	-
Operating temperature [°C]	-40 ~ +105

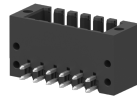
### Dimensions



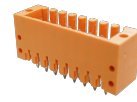
## Accessories



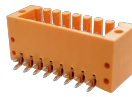
WJ15EDGVHSM-THR-3.5



WJ15EDGRHSM-THR-3.5



WJ15EDGVHSM-3.5



WJ15EDGRHSM-3.5