

Rated current: 10A
 Rated voltage: 300V
 Use wire diameter: 26-16AWG
 spacing:3.5mm
 Install:



The catalog is for reference only. The actual specifications are subject to the product engineering drawings. version 1.0

UL/CUL

Use Group	B	C	D
Rate Voltage [V]	300	50	300
Rated Current [A]	10	10	10
Wire Range [AWG]	26-16		
Dielectric Voltage-Withstand	1.6KV		

IEC

Overvoltage Category	III	III	II
Contamination Class	3	2	2
Rated Voltage [V]	160	160	320
Rated Current [A]	13.4	13.4	13.4

Impulse withstand voltage [KV]	2.5	2.5	2.5
Conductor cross section [mm ²]	0.2-1.5		

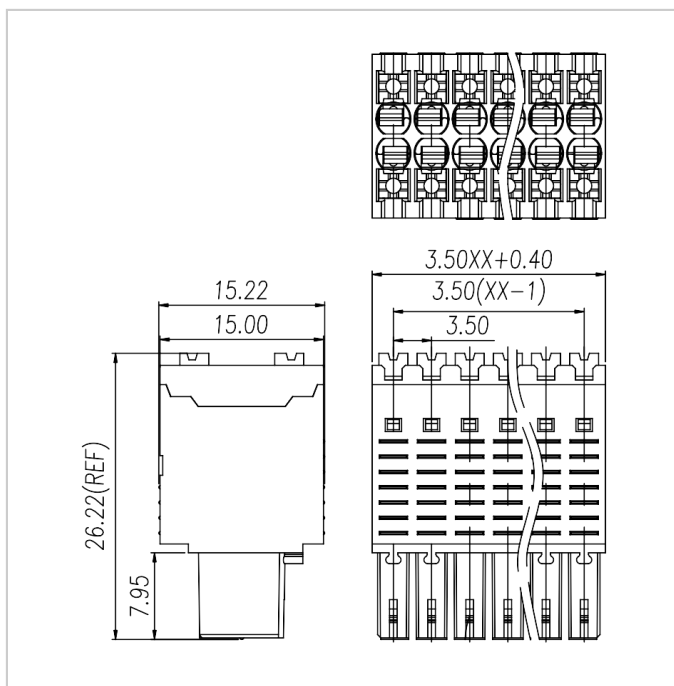
Material

Insulation Material	PA66
Flame retardant rating	UL94V-0
Conductor Material	Copper alloy
Plating of conductor surface	Sn plated

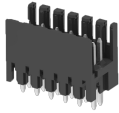
Other Date

Pitch/Poles [mm]/[P]	3.5/2*2-2*24
Stripping Length [mm]	10-11
Screw/Torque(Max)[N.m]	-
Operating temperature [°C]	-40 ~ +105

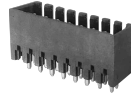
Dimensions



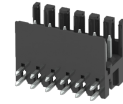
Accessories



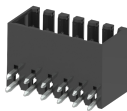
WJ15EDGVHS-THR-3.5



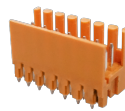
WJ15EDGVHSC-THR-3.5



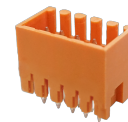
WJ15EDGRHS-THR-3.5



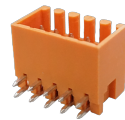
WJ15EDGRHSC-THR-3.5



WJ15EDGVHS-3.5



WJ15EDGVHSC-3.5



WJ15EDGRHSC-3.5