

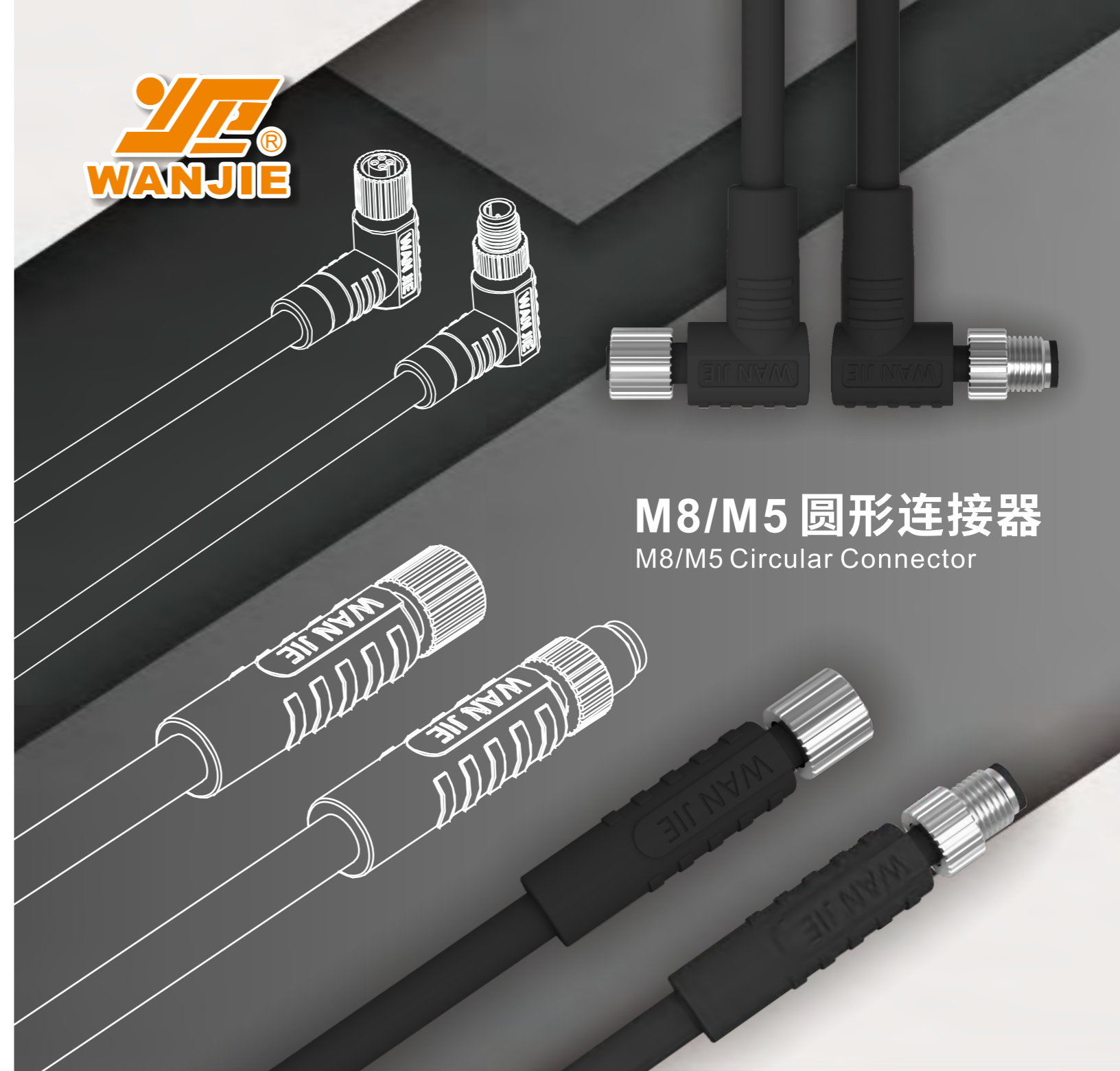


慈溪市万捷电子有限公司

地 址：中国浙江省慈溪市逍林镇樟新南路219号
邮 编：315321
电 话：+86-574-63510583 63510584 63516866
传 真：+86-574-63510580 63519360
网 址：<http://www.china-wj.com>
邮 箱：cjw@china-wj.com

CIXI WANJIE ELECTRONIC CO., LTD.

Add.: #219, Zhangxin South Rd, Xiaolin Town, Cixi,
Zhejiang, China. P.C: 315321
Tel: +86-574-63510582 63510586
Fax: +86-574-63507658 63510580
Website: <http://www.china-wj.com>
E-mail: cjw@china-wj.com



M8/M5 圆形连接器

M8/M5 Circular Connector

万捷电子

WANJIE ELECTRONIC

圆形连接器

Circular Connector

VERSION 2022

ISO14001 ISO80079-34 ISO9001:2008   **RoHS**



企业简介 INTRODUCTION

万捷电子创建于1992年,公司坐落于浙江省慈溪市,是一家从事接线端子及工业连接器类研发,设计,加工,生产,销售及一体化的专业制造商,产品包含螺钉式PCB接线端子,插拔式接线端子,弹簧PCB式接线端子, MCS多用途接线器,贯通式接端子,栅栏式接线端子,圆形连接器等系列,广泛应用于电力控制,自动化控制,电梯,仪器仪表,通讯,电源,安防,照明,轨道交通,船舶,工业设备网络信号传输等相关领域。产品畅销于世界各地,并深受客户的一致好评。

WANJIE was founded in 1992, we are located in Cixi City, Zhejiang Province. we are a professional manufacturer engaged in the research and development, design, processing, production, sales and service of terminal blocks and industrial connectors. Its products include screw PCB terminal blocks, plug-in terminal blocks, spring PCB terminal blocks, MCS multi-purpose terminal blocks, through terminal blocks and fence terminal blocks, Circular connector series. It is widely used in power control, automation control, elevator, instrument, communication, power supply, security, lighting, rail transit, ship, industrial equipment network signal transmission and other related fields. The products sell well all over the world and have received by customers.

检测设备 TESTING EQUIPMENT

万捷电子拥有领先的生产设备,丰富专业知识和经验的研发团队,公司本着对完美品质的不懈追求,在塑料成型,金属加工,产品装配等各个环节上严格贯彻ISO9001质量体系,并采用国际先进的检测设备对产品进行相关的性能测试,最大限度满足客户的需求。

WANJIE Company has advanced production equipment, a wealth of professional knowledge and experience to ensure the coordination between development and production. Based on the pursuit of perfect quality, we implement the ISO9001 Quality Control System in the each step, such as, the plastic housing processing, metal parts production, surface treatment, assemble and so on. On the other hand, we adopt the advance testing equipment to make systematic testing in each circle in the production, so that to meet the exacting demands of customers.

研发创新 R&D INNOVATION

万捷电子诚邀国内外行业精英,设立研发中心,建立技术创新平台。基于此研发和技术创新平台,公司对市场做出更快速的反应、集成多方资源,为国内外客户提供最直接、最优质的技术支持等服务。

万捷电子将研发与市场的需求紧密相结合,与最终用户共同合作,创造出具有国际竞争力的产品。

WANJIE Company invites many industry elites to set up R&D center, and establish the technological innovation platform, basing on the platform, we can make faster reaction on the market, and integrate all resources to provide the market, and integrate all resources to provide the most direct and best service for all of our customers.

WANJIE Company also make a closely integration between research and market, and cooperate with end customers, to create an international competitive products.

销售网络 MARKETING NETWORK

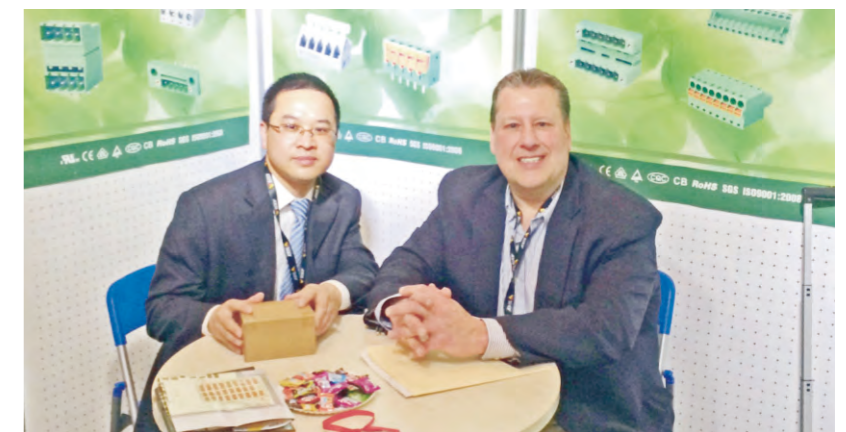
万捷电子经过多年的发展,以高质量的产品,优质的服务和强大的物流体系,获得客户的信赖,并在全球建立了全面的销售网络,以便我们能及时与客户沟通和提供服务,达到合作共赢,共同发展。

Through many years development, basing on high quality and excellent service, we have established a comprehensive sales network in the world, we also built lots of offices in many regions so that we can make a timely communication with customers, and provide a good promise and guarantee accordingly.



研发创新 R&D INNOVATION

连接器专业制造商



OUR ETERNAL PURPOSE:

Excellence, quality first, service-oriented, continuous improvement and customer satisfaction

我们的宗旨:

精益求精, 质量为先, 服务第一, 持续改善, 顾客满意

Product advantages

1. The overall dimension of the product is small and the occupied space is limited.
2. Screw Twist butt connection, stable electrical performance, can be used in continuous impact, vibration and other application environments.
3. The sealing performance can reach IP67 protection grade.
4. The product has connectors and connectors with cables.
5. Shielding is optional: non shielding, shielding and grounding.
6. Connector technology suitable for various occasions.
7. It can be paired with the same series of connectors in the market.

产品优势

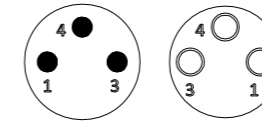
1. 产品外形尺寸较小，占用空间有限。
2. 螺纹旋扭对插连接，电气性能稳定，可用于持续冲击，振动等应用环境。
3. 密封性能可达IP67防护等级。
4. 产品有连接器与带线缆连接器可选。
5. 屏蔽性可选：非屏蔽、屏蔽、接地等三种。
6. 适用于各种场合的连接技术。
7. 可与市场同行同系列连接器互配对插。
8. 产品符合IEC61076, 产品种类多，可自行选择应用。



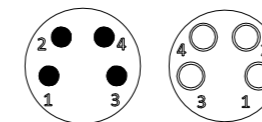
Circular M8 connector is waterproof, oil resistant, cold resistant, stable performance, efficient and fast connection. It is widely used in automobile sensor connecting line, photoelectric switch, proximity switch, industrial automatic robot sensor and various industrial 4.0 integrated harness wiring systems. Wanjie can provide customers with various innovative equipment connectors and connector cables.

圆形M8连接器防水，耐油，耐寒，性能稳定，高效快速连接，广泛用于汽车传感器，连接线，光电开关，接近开关，工业自动化，机器人传感器和各种工业4.0集成线束布线系统中，万捷可为客户配合提供各种不同创新型设备连接器及连接器线缆。

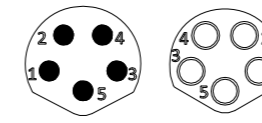
M8 Male/Female Contact layout:(M8 公/母Pin位分布图)



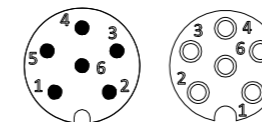
3Pin A-Coding 公母



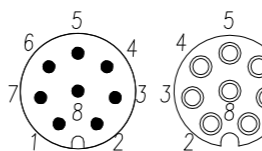
4Pin A-Coding 公母



5Pin B-Coding 公母



6Pin A-Coding 公母



8Pin A-Coding 公母

M8 公母Pin位分布图

PIN位	3PIN A-Coding	
1	BN(棕)	
NC		
3	BU(蓝)	
4	BK(黑)	

M8 公母Pin位分布图

PIN位	4PIN A-Coding	
1	BN(棕)	
2	WH(白)	
3	BU(蓝)	
4	BK(黑)	

M8 公母Pin位分布图

PIN位	5PIN B-Coding	
1	BN(棕)	
2	WH(白)	
3	BU(蓝)	
4	BK(黑)	
5	GY(灰)	

M8 公母Pin位分布图

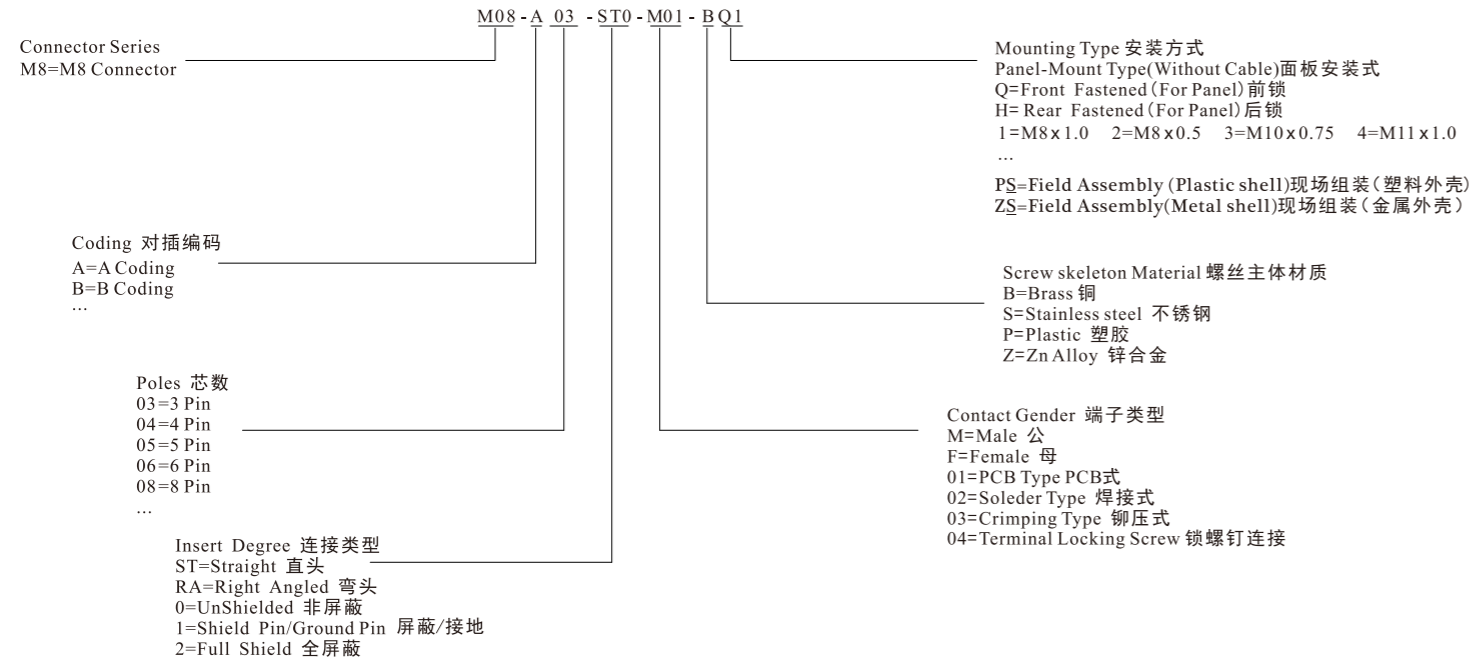
PIN位	6PIN A-Coding	
1	BN(棕)	
2	WH(白)	
3	BU(蓝)	
4	BK(黑)	
5	GY(灰)	
6	PK(粉)	

M8 公母Pin位分布图

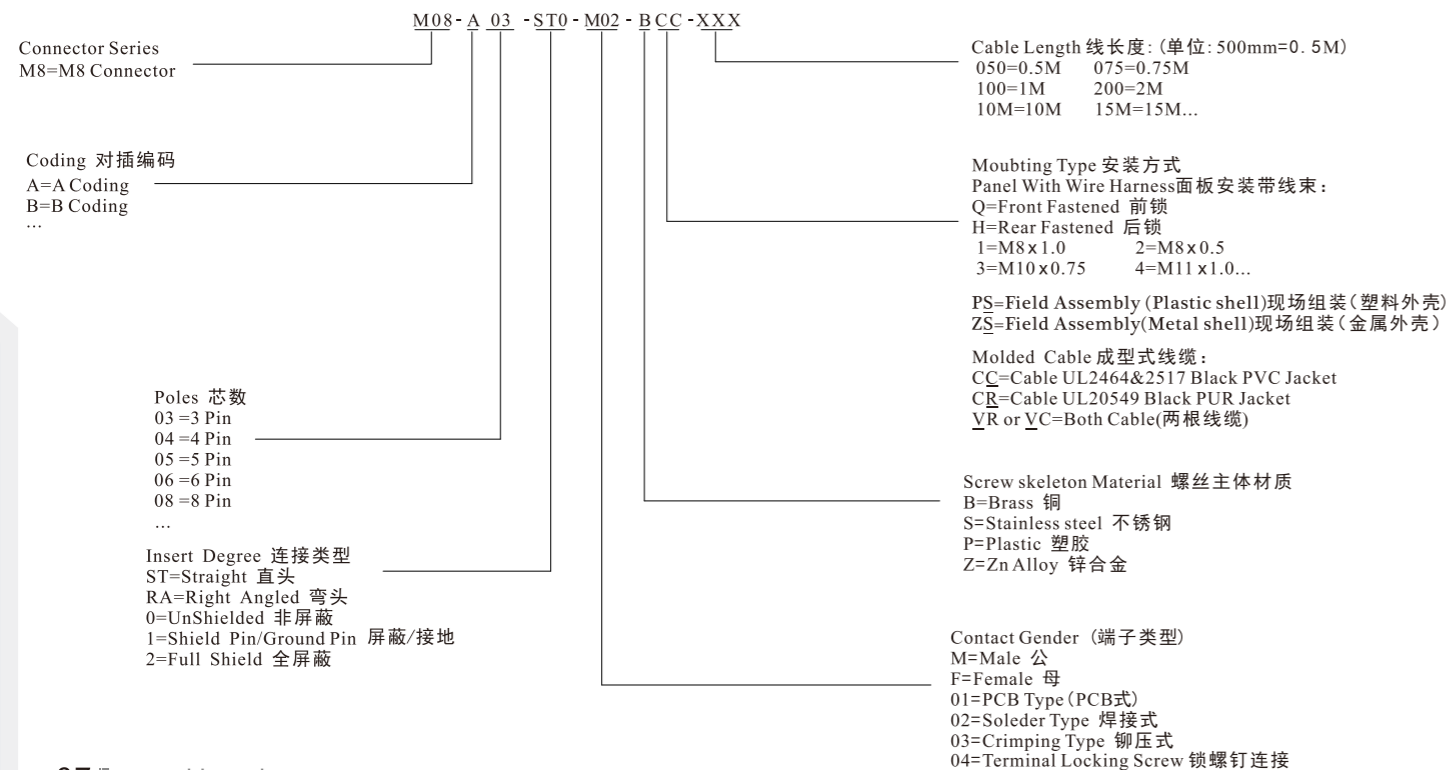
PIN位	8PIN A-Coding	
1	WH(白)	
2	BN(棕)	
3	GN(绿)	
4	YE(黄)	
5	GY(灰)	
6	PK(粉)	
7	BU(蓝)	
8	RD(红)	

How To Find The Part Number You Need 如何订购所需的产品编号

M8 Connector Series Without Cable:
M8 连接器系列:



M8 Connector Series Aeries Assembly(With Cable Assembly)
M8 连接器带线缆成品系列:



M8产品目录

PRODUCTS WORLD

诚邀国内外行业精英, 设立研发中心, 建立技术创新平台。基于此研发和技术创新平台, 公司对市场做出更快速的反应、集成多方资源, 为国内外客户提供最直接、最优质的技术支持等服务。

09/14

成型式 Molded Cables

15/16

分配器-转接器 Adapter Y-Splitter

17/22

面板式焊线式 Panel Solder Wire

23/28

面板式焊接型 Panel Solder

29/34

面板式PCB Panel PCB

35/36

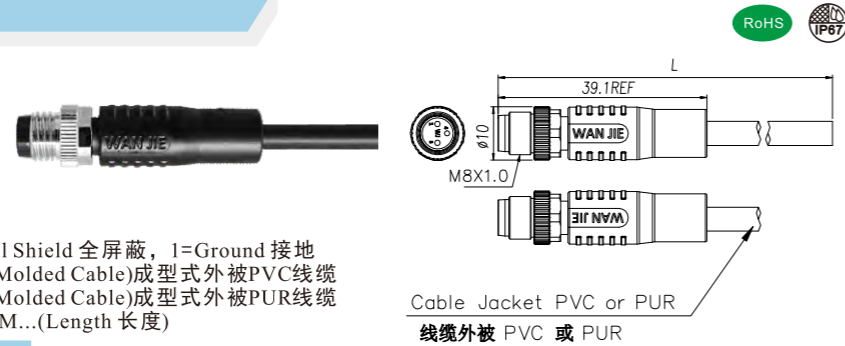
组装式-非屏蔽 Field Assembly- unshielded

37/38

组装式-屏蔽 Field Assembly- Shielded

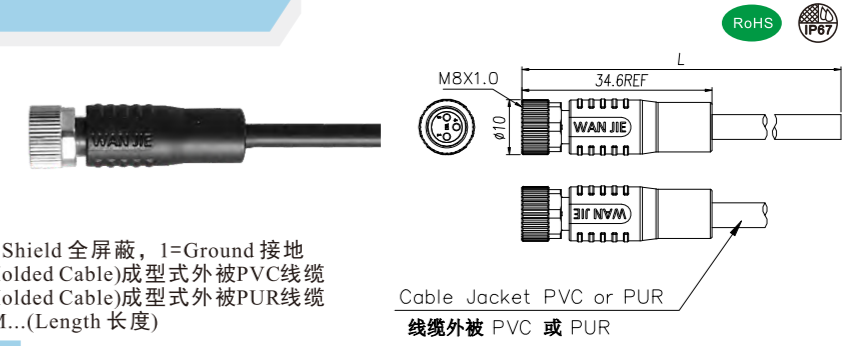
M8 Male Molded Cables, Straight
M8 公头成型式线缆, 直头

Connector Series 连接器系列: M8
Gender 类型: Male 公
Coding 编码: A, B
Locking Type 装配方式: Fix Screw 锁螺丝
Mounting Type 安装类型: Straight 直头
Part No 产品编号: M08-X** -ST0-M02-BC*-XXX
X:A,B Coding(A,B扣)
**:03,04,05,06,08(Pin数)
ST0:0=Unshielded 非屏蔽, 2=Full Shield 全屏蔽, 1=Ground 接地
BC*:BCC=Cable Jacket PVC(For Molded Cable)成型式外被PVC线缆
BC*:BCR=Cable Jacket PUR(For Molded Cable)成型式外被PUR线缆
XXX:050=0.5M,100=1M,10M=10M...(Length 长度)



M8 Female Molded Cables, Straight
M8 母头成型式线缆, 直头

Connector Series 连接器系列: M8
Gender 类型: Female 母
Coding 编码: A, B
Locking Type 装配方式: Fix Screw 锁螺丝
Mounting Type 安装类型: Straight 直头
Part No 产品编号: M08-X** -ST0-F02-BC*-XXX
X:A,B Coding(A,B扣)
**:03,04,05,06,08(Pin数)
ST0:0=Unshielded 非屏蔽, 2=Full Shield 全屏蔽, 1=Ground 接地
BC*:BCC=Cable Jacket PVC(For Molded Cable)成型式外被PVC线缆
BC*:BCR=Cable Jacket PUR(For Molded Cable)成型式外被PUR线缆
XXX:050=0.5M,100=1M,10M=10M...(Length 长度)



General Information 基本信息

Technical data 技术参数

Standard 标准: IEC61076-2-104
Ambient Temperature 工作温度: -25°C~+80°C
Insulation Resistance 绝缘电阻: ≥100MΩ
Contact Resistance 接触电阻: ≤5mΩ
IP Class 防护等级: IP67
Mating Endurance 机械寿命: >100 Mating Cycles

Material Data 材质说明

Connector Carriers 胶芯材料: PA
Connector Contacts 接触端子: Copper Alloy With Gold Plated 铜镀金
Connector Nut/Screw 螺母/螺丝: Copper Alloy With Nickel Plated 铜镀镍
Connector Overmold 连接器外模: TPU
Shielding 屏蔽: Unshielded 非屏蔽/Shielded 屏蔽

Electrical Data & Mechanical Data 电气参数&机械参数

Contacts Pin数	Available Coding 防插错编码	Rated Current 额定电流	Voltage 电压		Wire Range 接线范围		Cable Jacket 线缆外被	Part NO.产品编号
			AC	DC	AWG	mm ²		
03Pins	A-Coding	3A	50V	60V	24	0.25	PVC	M08-A03-ST*-M02-BCC-XXX
							PUR	M08-A03-ST*-M02-BCR-XXX
04Pins	A-Coding	3A	50V	60V	24	0.25	PVC	M08-A04-ST*-M02-BCC-XXX
							PUR	M08-A04-ST*-M02-BCR-XXX
05Pins	B-Coding	3A	30V	30V	24	0.25	PVC	M08-B05-ST*-M02-BCC-XXX
							PUR	M08-B05-ST*-M02-BCR-XXX
06Pins	A-Coding	1.5A	30V	30V	26	0.14	PVC	M08-A06-ST*-M02-BCC-XXX
							PUR	M08-A06-ST*-M02-BCR-XXX
08Pins	A-Coding	1.5A	30V	30V	26	0.14	PVC	M08-A08-ST*-M02-BCC-XXX
							PUR	M08-A08-ST*-M02-BCR-XXX

General Information 基本信息

Technical data 技术参数

Standard 标准: IEC61076-2-104
Ambient Temperature 工作温度: -25°C~+80°C
Insulation Resistance 绝缘电阻: ≥100MΩ
Contact Resistance 接触电阻: ≤5mΩ
IP Class 防护等级: IP67
Mating Endurance 机械寿命: >100 Mating Cycles

Material Data 材质说明

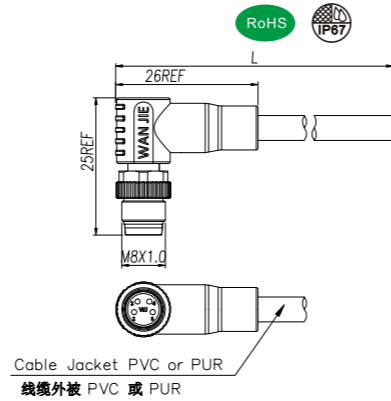
Connector Carriers 胶芯材料: PA
Connector Contacts 接触端子: Copper Alloy With Gold Plated 铜镀金
Connector Nut/Screw 螺母/螺丝: Copper Alloy With Nickel Plated 铜镀镍
Connector Overmold 连接器外模: TPU
Seal/O-Ring 密封胶圈: FKM 氟橡胶
Shielding 屏蔽: Unshielded 非屏蔽/Shielded 屏蔽

Electrical Data & Mechanical Data 电气参数&机械参数

Contacts Pin数	Available Coding 防插错编码	Rated Current 额定电流	Voltage 电压		Wire Range 接线范围		Cable Jacket 线缆外被	Part NO.产品编号
			AC	DC	AWG	mm ²		
03Pins	A-Coding	3A	50V	60V	24	0.25	PVC	M08-A03-ST*-F02-BCC-XXX
							PUR	M08-A03-ST*-F02-BCR-XXX
04Pins	A-Coding	3A	50V	60V	24	0.25	PVC	M08-A04-ST*-F02-BCC-XXX
							PUR	M08-A04-ST*-F02-BCR-XXX
05Pins	B-Coding	3A	30V	30V	24	0.25	PVC	M08-B05-ST*-F02-BCC-XXX
							PUR	M08-B05-ST*-F02-BCR-XXX
06Pins	A-Coding	1.5A	30V	30V	26	0.14	PVC	M08-A06-ST*-F02-BCC-XXX
							PUR	M08-A06-ST*-F02-BCR-XXX
08Pins	A-Coding	1.5A	30V	30V	26	0.14	PVC	M08-A08-ST*-F02-BCC-XXX
							PUR	M08-A08-ST*-F02-BCR-XXX

M8 Male Molded Cables, Angled
M8 公头成型式线缆, 弯头

Connector Series 连接器系列: M8
Gender 类型: Male 公
Coding 编码: A, B
Locking Type 装配方式: Fix Screw 锁螺丝
Mounting Type 安装类型: Angled 弯头
Part No 产品编号: M08-X** -RA0-M02-BC*-XXX
X:A,B Coding(A,B扣)
**:03,04,05,06,08(Pin数)
RA0:0=Unshielded 非屏蔽, 2=Full Shield 全屏蔽, 1=Ground 接地
BC*:BCC=Cable Jacket PVC(For Molded Cable)成型式外被PVC线缆
BC*:BCR=Cable Jacket PUR(For Molded Cable)成型式外被PUR线缆
XXX:050=0.5M,100=1M,10M=10M...(Length 长度)



General Information 基本信息

Technical data 技术参数

Standard 标准: IEC61076-2-104
Ambient Temperature 工作温度: -25°C~+80°C
Insulation Resistance 绝缘电阻: ≥100MΩ
Contact Resistance 接触电阻: ≤5mΩ
IP Class 防护等级: IP67
Mating Endurance 机械寿命: >100 Mating Cycles

Material Data 材质说明

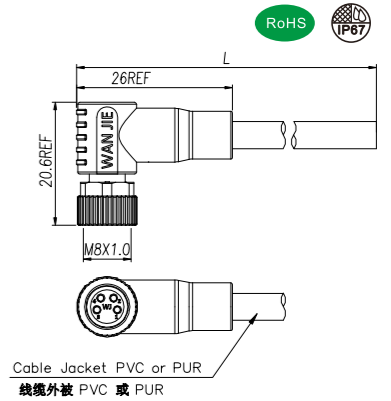
Connector Carriers 胶芯材料: PA
Connector Contacts 接触端子: Copper Alloy With Gold Plated 铜镀金
Connector Nut/Screw 螺母/螺丝: Copper Alloy With Nickel Plated 铜镀镍
Connector Overmold 连接器外模: TPU
Shielding 屏蔽: Unshielded 非屏蔽/Shielded 屏蔽

Electrical Data & Mechanical Data 电气参数&机械参数

Contacts Pin数	Available Coding 防插错编码	Rated Current 额定电流	Voltage 电压		Wire Range 接线范围		Cable Jacket 线缆外被	Part NO.产品编号
			AC	DC	AWG	mm ²		
03Pins	A-Coding	3A	50V	60V	24	0.25	PVC	M08-A03-RA*-M02-BCC-XXX
							PUR	M08-A03-RA*-M02-BCR-XXX
04Pins	A-Coding	3A	50V	60V	24	0.25	PVC	M08-A04-RA*-M02-BCC-XXX
							PUR	M08-A04-RA*-M02-BCR-XXX
05Pins	B-Coding	3A	30V	30V	24	0.25	PVC	M08-B05-RA*-M02-BCC-XXX
							PUR	M08-B05-RA*-M02-BCR-XXX
06Pins	A-Coding	1.5A	30V	30V	26	0.14	PVC	M08-A06-RA*-M02-BCC-XXX
							PUR	M08-A06-RA*-M02-BCR-XXX
08Pins	A-Coding	1.5A	30V	30V	26	0.14	PVC	M08-A08-RA*-M02-BCC-XXX
							PUR	M08-A08-RA*-M02-BCR-XXX

M8 Female Molded Cables, Angled
M8 母头成型式线缆, 弯头

Connector Series 连接器系列: M8
Gender 类型: Female 母
Coding 编码: A, B
Locking Type 装配方式: Fix Screw 锁螺丝
Mounting Type 安装类型: Angled 弯头
Part No 产品编号: M08-X** -RA0-F02-BC*-XXX
X:A,B Coding(A,B扣)
**:03,04,05,06,08(Pin数)
RA0:0=Unshielded 非屏蔽, 2=Full Shield 全屏蔽, 1=Ground 接地
BC*:BCC=Cable Jacket PVC(For Molded Cable)成型式外被PVC线缆
BC*:BCR=Cable Jacket PUR(For Molded Cable)成型式外被PUR线缆
XXX:050=0.5M,100=1M,10M=10M...(Length 长度)



General Information 基本信息

Technical data 技术参数

Standard 标准: IEC61076-2-104
Ambient Temperature 工作温度: -25°C~+80°C
Insulation Resistance 绝缘电阻: ≥100MΩ
Contact Resistance 接触电阻: ≤5mΩ
IP Class 防护等级: IP67
Mating Endurance 机械寿命: >100 Mating Cycles

Material Data 材质说明

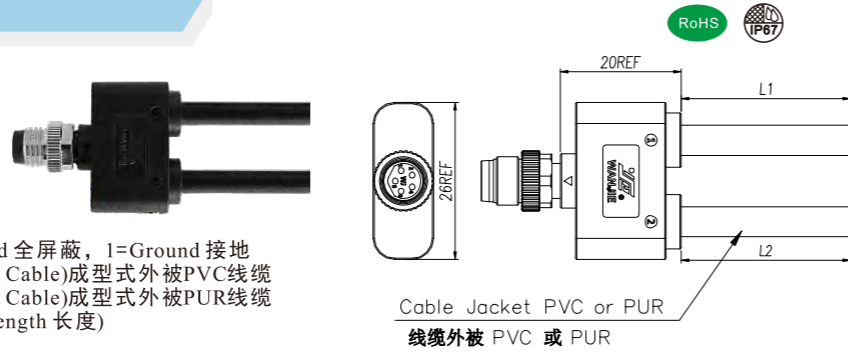
Connector Carriers 胶芯材料: PA
Connector Contacts 接触端子: Copper Alloy With Gold Plated 铜镀金
Connector Nut/Screw 螺母/螺丝: Copper Alloy With Nickel Plated 铜镀镍
Connector Overmold 连接器外模: TPU
Seal/O-Ring 密封胶圈: FKM 氟橡胶
Shielding 屏蔽: Unshielded 非屏蔽/Shielded 屏蔽

Electrical Data & Mechanical Data 电气参数&机械参数

Contacts Pin数	Available Coding 防插错编码	Rated Current 额定电流	Voltage 电压		Wire Range 接线范围		Cable Jacket 线缆外被	Part NO.产品编号
			AC	DC	AWG	mm ²		
03Pins	A-Coding	3A	50V	60V	24	0.25	PVC	M08-A03-RA*-F02-BCC-XXX
							PUR	M08-A03-RA*-F02-BCR-XXX
04Pins	A-Coding	3A	50V	60V	24	0.25	PVC	M08-A04-RA*-F02-BCC-XXX
							PUR	M08-A04-RA*-F02-BCR-XXX
05Pins	B-Coding	3A	30V	30V	24	0.25	PVC	M08-B05-RA*-F02-BCC-XXX
							PUR	M08-B05-RA*-F02-BCR-XXX
06Pins	A-Coding	1.5A	30V	30V	26	0.14	PVC	M08-A06-RA*-F02-BCC-XXX
							PUR	M08-A06-RA*-F02-BCR-XXX
08Pins	A-Coding	1.5A	30V	30V	26	0.14	PVC	M08-A08-RA*-F02-BCC-XXX
							PUR	M08-A08-RA*-F02-BCR-XXX

M8 Male Molded 2 Cables, Straight
M8 公头成型式双线缆，直头

Connector Series 连接器系列: M8
Gender 类型: Male 公
Coding 编码: A, B
Locking Type 装配方式: Fix Screw 锁螺丝
Mounting Type 安装类型: Straight 直头
Part No 产品编号: M08-X** -ST0-M02-BV*-XXX
X:A,B Coding(A,B扣)
**:03,04,05 (Pin数)
ST0:0=Unshielded 非屏蔽, 2=Full Shield 全屏蔽, 1=Ground 接地
BV*:BVC=Cable Jacket PVC(For Molded Cable)成型式外被PVC线缆
BV*:BVR=Cable Jacket PUR(For Molded Cable)成型式外被PUR线缆
XXX:050=0.5M,100=1M,10M=10M...(Length 长度)



General Information 基本信息

Technical data 技术参数

Standard 标准: IEC61076
Ambient Temperature 工作温度: -25°C~+80°C
Insulation Resistance 绝缘电阻: ≥100MΩ
Contact Resistance 接触电阻: ≤5mΩ
IP Class 防护等级: IP67
Mating Endurance 机械寿命: >100 Mating Cycles

Material Data 材质说明

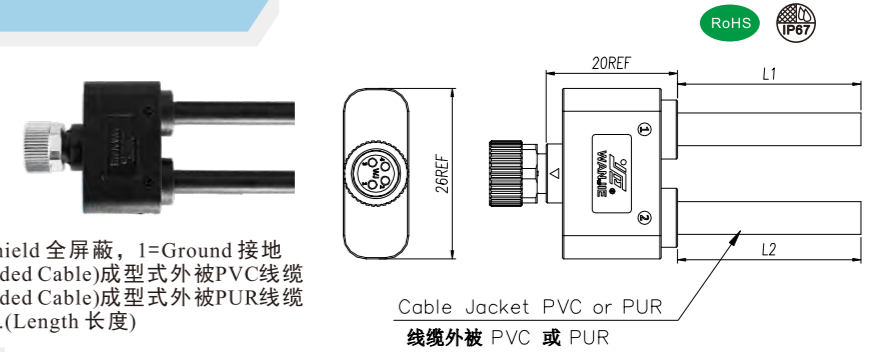
Connector Carriers 胶芯材料: PA
Connector Contacts 接触端子: Copper Alloy With Gold Plated 铜镀金
Connector Nut/Screw 螺母/螺丝: Copper Alloy With Nickel Plated 铜镀镍
Connector Overmold 连接器外模: TPU
Shielding 屏蔽: Unshielded 非屏蔽/Shielded 屏蔽

Electrical Data & Mechanical Data 电气参数&机械参数

Contacts Pin数	Available Coding 防插错编码	Rated Current 额定电流	Voltage 电压		Wire Range 接线范围		Cable Jacket 线缆外被	Part NO.产品编号
			AC	DC	AWG	mm ²		
03Pins	A-Coding	3A	50V	60V	24	0.25	PVC	M8-A03-ST*-M02-BVC-XXX
							PUR	M8-A03-ST*-M02-BVR-XXX
04Pins	A-Coding	3A	50V	60V	24	0.25	PVC	M8-A04-ST*-M02-BVC-XXX
							PUR	M8-A04-ST*-M02-BVR-XXX
05Pins	B-Coding	3A	30V	30V	24	0.25	PVC	M8-B05-ST*-M02-BVC-XXX
							PUR	M8-B05-ST*-M02-BVR-XXX

M8 Female Molded 2 Cables, Straight
M8 母头成型式双线缆，直头

Connector Series 连接器系列: M8
Gender 类型: Female 母
Coding 编码: A, B
Locking Type 装配方式: Fix Screw 锁螺丝
Mounting Type 安装类型: Straight 直头
Part No 产品编号: M08-X** -ST0-F02-BV*-XXX
X:A,B Coding(A,B扣)
**:03,04,05 (Pin数)
ST0:0=Unshielded 非屏蔽, 2=Full Shield 全屏蔽, 1=Ground 接地
BV*:BVC=Cable Jacket PVC(For Molded Cable)成型式外被PVC线缆
BV*:BVR=Cable Jacket PUR(For Molded Cable)成型式外被PUR线缆
XXX:050=0.5M,100=1M,10M=10M...(Length 长度)



General Information 基本信息

Technical data 技术参数

Standard 标准: IEC61076
Ambient Temperature 工作温度: -25°C~+80°C
Insulation Resistance 绝缘电阻: ≥100MΩ
Contact Resistance 接触电阻: ≤5mΩ
IP Class 防护等级: IP67
Mating Endurance 机械寿命: >100 Mating Cycles

Material Data 材质说明

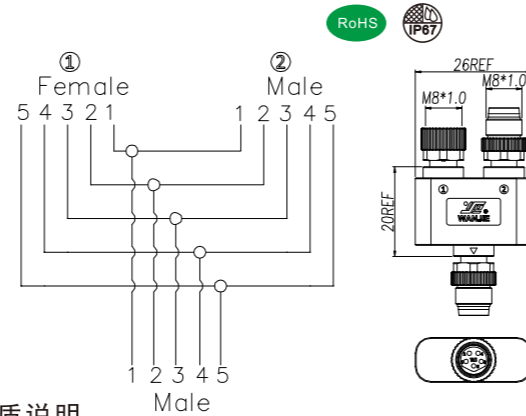
Connector Carriers 胶芯材料: PA
Connector Contacts 接触端子: Copper Alloy With Gold Plated 铜镀金
Connector Nut/Screw 螺母/螺丝: Copper Alloy With Nickel Plated 铜镀镍
Connector Overmold 连接器外模: TPU
Seal/O-Ring 密封胶圈: FKM 氟橡胶
Shielding 屏蔽: Unshielded 非屏蔽/Shielded 屏蔽

Electrical Data & Mechanical Data 电气参数&机械参数

Contacts Pin数	Available Coding 防插错编码	Rated Current 额定电流	Voltage 电压		Wire Range 接线范围		Cable Jacket 线缆外被	Part NO.产品编号
			AC	DC	AWG	mm ²		
03Pins	A-Coding	3A	50V	60V	24	0.25	PVC	M08-A03-ST*-F02-BVC-XXX
							PUR	M08-A03-ST*-F02-BVR-XXX
04Pins	A-Coding	3A	50V	60V	24	0.25	PVC	M08-A04-ST*-F02-BVC-XXX
							PUR	M08-A04-ST*-F02-BVR-XXX
05Pins	B-Coding	3A	30V	30V	24	0.25	PVC	M08-B05-ST*-F02-BVC-XXX
							PUR	M08-B05-ST*-F02-BVR-XXX

M8 Y-Splitter, Male-Male-Female
M8 Y型分配器, 公-公-母

Connector Series 连接器系列: M8
Gender 类型: Male 公
Coding 编码: A, B
Locking Type 装配方式: Fix Screw 锁螺丝
Mounting Type 安装类型: Y-Splitter Y型分配器
Part No 产品编号: M08-X** -ST0-M02-BFM
X:A,B Coding(A,B扣)
**:03,04,05 (Pin数)
ST0:0=Unshielded 非屏蔽, 2=Full Shield 全屏蔽, 1=Ground 接地
BFM:①=F(Female) ②=M(Male)



General Information 基本信息

Technical data 技术参数

Standard 标准: IEC61076
Ambient Temperature 工作温度: -25°C~+80°C
Insulation Resistance 绝缘电阻: ≥100MΩ
Contact Resistance 接触电阻: ≤5mΩ
IP Class 防护等级: IP67
Mating Endurance 机械寿命: >100 Mating Cycles

Material Data 材质说明

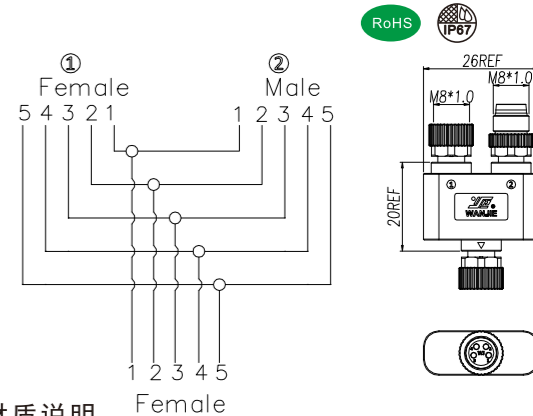
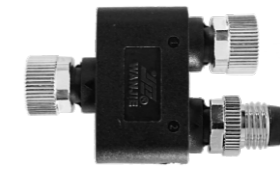
Connector Carriers 胶芯材料: PA,PU
Connector Contacts 接触端子: Copper Alloy With Gold Plated 铜镀金
Connector Nut/Screw 螺母/螺丝: Copper Alloy With Nickel Plated 铜镀镍
Connector Overmold 连接器外模: TPU
Shielding 屏蔽: Unshielded 非屏蔽/Shielded 屏蔽

Electrical Data & Mechanical Data 电气参数&机械参数

Contacts Pin数	Available Coding 防插错编码	Rated Current 额定电流	Voltage 电压		Wire Range 接线范围		Part NO.产品编号
			AC	DC	AWG	mm ²	
03Pins	A-Coding 	3A	50V	60V	24	0.25	M08-A03-ST0-M02-BFM
04Pins	A-Coding 	3A	50V	60V	24	0.25	M08-A04-ST0-M02-BFM
05Pins	B-Coding 	3A	30V	30V	24	0.25	M08-B05-ST0-M02-BFM

M8 Y-Splitter, Female-Male-Female
M8 Y型分配器, 母-公-母

Connector Series 连接器系列: M8
Gender 类型: Female 母
Coding 编码: A, B
Locking Type 装配方式: Fix Screw 锁螺丝
Mounting Type 安装类型: Y-Splitter Y型分配器
Part No 产品编号: M08-X** -ST0-F02-BFM
X:A,B Coding(A,B扣)
**:03,04,05 (Pin数)
ST0:0=Unshielded 非屏蔽, 2=Full Shield 全屏蔽, 1=Ground 接地
BFM:①=F(Female) ②=M(Male)



General Information 基本信息

Technical data 技术参数

Standard 标准: IEC61076
Ambient Temperature 工作温度: -25°C~+80°C
Insulation Resistance 绝缘电阻: ≥100MΩ
Contact Resistance 接触电阻: ≤5mΩ
IP Class 防护等级: IP67
Mating Endurance 机械寿命: >100 Mating Cycles

Material Data 材质说明

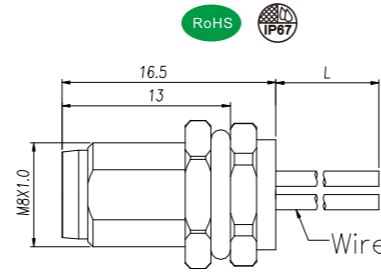
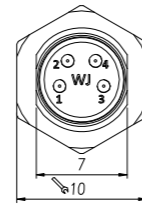
Connector Carriers 胶芯材料: PA,PU
Connector Contacts 接触端子: Copper Alloy With Gold Plated 铜镀金
Connector Nut/Screw 螺母/螺丝: Copper Alloy With Nickel Plated 铜镀镍
Connector Overmold 连接器外模: TPU
Seal/O-Ring 密封胶圈: FKM 氟橡胶
Shielding 屏蔽: Unshielded 非屏蔽/Shielded 屏蔽

Electrical Data & Mechanical Data 电气参数&机械参数

Contacts Pin数	Available Coding 防插错编码	Rated Current 额定电流	Voltage 电压		Wire Range 接线范围		Part NO.产品编号
			AC	DC	AWG	mm ²	
03Pins	A-Coding 	3A	50V	60V	24	0.25	M08-A03-ST0-F02-BFM
04Pins	A-Coding 	3A	50V	60V	24	0.25	M08-A04-ST0-F02-BFM
05Pins	B-Coding 	3A	30V	30V	24	0.25	M08-B05-ST0-F02-BFM

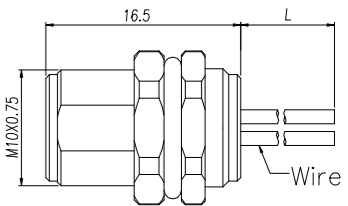
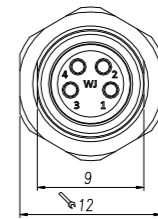
M8 Male Panel Mount, Solder Type, Front Fastened With Wires
M8 公头面板式，焊接型，前锁安装，焊电子线

Connector Series 连接器系列: M8
Gender 类型: Male 公
Coding 编码: A, B
Locking Type 装配方式: Fix Screw 锁螺丝
Mounting Type 安装类型: Front Fastened 前锁
Part No 产品编号: M08-X** -ST0-M02-BQ1-XXX
X:A,B Coding(A,B扣)
**:03,04,05,06,08 (Pin数)
BQ1:1=M8x1.0(OD1)
XXX:050=0.5M,100=1M,10M=10M...(Length长度)



M8 Female Panel Mount, Solder Type, Front Fastened With Wires
M8 母头面板式，焊接型，前锁安装，焊电子线

Connector Series 连接器系列: M8
Gender 类型: Female 母
Coding 编码: A, B
Locking Type 装配方式: Fix Screw 锁螺丝
Mounting Type 安装类型: Front Fastened 前锁
Part No 产品编号: M08-X** -ST0-F02-BQ3-XXX
X:A,B Coding(A,B扣)
**:03,04,05,06,08 (Pin数)
BQ3:3=M10x0.75(OD3)
XXX:050=0.5M,100=1M,10M=10M...(Length长度)



General Information 基本信息

Technical data 技术参数

Standard 标准: IEC61076-2-104
Ambient Temperature 工作温度: -25°C~+85°C
Insulation Resistance 绝缘电阻: ≥100MΩ
Contact Resistance 接触电阻: ≤5mΩ
IP Class 防护等级: IP67
Mating Endurance 机械寿命: >100 Mating Cycles

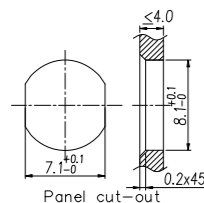
Material Data 材质说明

Connector Carriers 胶芯材料: PA
Connector Contacts 接触端子: Copper Alloy With Gold Plated 铜镀金
Connector Nut/Screw 螺母/螺丝: Copper Alloy With Nickel Plated 铜镀镍
Seal/O-Ring 密封胶圈: FKM氟橡胶
Shielding 屏蔽: Unshielded 非屏蔽

Electrical Data & Mechanical Data 电气参数&机械参数

Contacts Pin数	Available Coding 防插错编码	Rated Current 额定电流	Voltage 电压		Wire Range 接线范围		Part NO.产品编号
			AC	DC	AWG	mm ²	
03Pins	A-Coding	3A	50V	60V	24	0.25	M08-A03-ST0-M02-BQ1-XXX
04Pins	A-Coding	3A	50V	60V	24	0.25	M08-A04-ST0-M02-BQ1-XXX
05Pins	B-Coding	3A	30V	30V	24	0.25	M08-B05-ST0-M02-BQ1-XXX
06Pins	A-Coding	1.5A	30V	30V	26	0.14	M08-A06-ST0-M02-BQ1-XXX
08Pins	A-Coding	1.5A	30V	30V	26	0.14	M08-A08-ST0-M02-BQ1-XXX

M8 Connector



Panel cut-out 安装尺寸
M8X1.0
OD1: 8.1 \pm 0.1

General Information 基本信息

Technical data 技术参数

Standard 标准: IEC61076-2-104
Ambient Temperature 工作温度: -25°C~+85°C
Insulation Resistance 绝缘电阻: ≥100MΩ
Contact Resistance 接触电阻: ≤5mΩ
IP Class 防护等级: IP67
Mating Endurance 机械寿命: >100 Mating Cycles

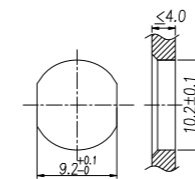
Material Data 材质说明

Connector Carriers 胶芯材料: PA
Connector Contacts 接触端子: Copper Alloy With Gold Plated 铜镀金
Connector Nut/Screw 螺母/螺丝: Copper Alloy With Nickel Plated 铜镀镍
Seal/O-Ring 密封胶圈: FKM 氟橡胶
Shielding 屏蔽: Unshielded 非屏蔽

Electrical Data & Mechanical Data 电气参数&机械参数

Contacts Pin数	Available Coding 防插错编码	Rated Current 额定电流	Voltage 电压		Wire Range 接线范围		Part NO.产品编号
			AC	DC	AWG	mm ²	
03Pins	A-Coding	3A	50V	60V	24	0.25	M08-A03-ST0-F02-BQ3-XXX
04Pins	A-Coding	3A	50V	60V	24	0.25	M08-A04-ST0-F02-BQ3-XXX
05Pins	B-Coding	3A	30V	30V	24	0.25	M08-B05-ST0-F02-BQ3-XXX
06Pins	A-Coding	1.5A	30V	30V	26	0.14	M08-A06-ST0-F02-BQ3-XXX
08Pins	A-Coding	1.5A	30V	30V	26	0.14	M08-A08-ST0-F02-BQ3-XXX

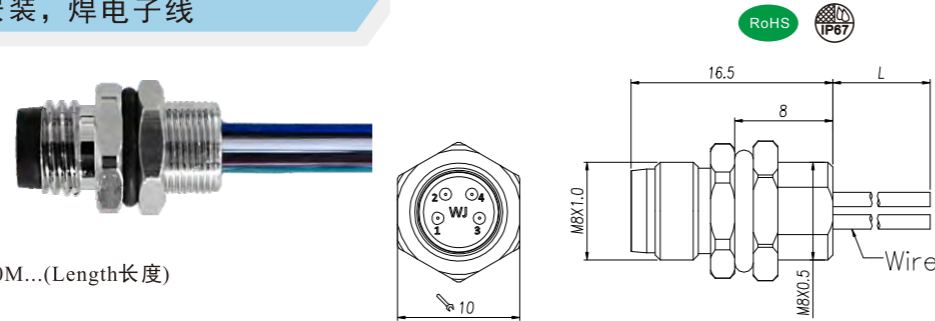
M8 Connector



Panel cut-out 安装尺寸
M10X0.75
OD3: 10.2 \pm 0.1

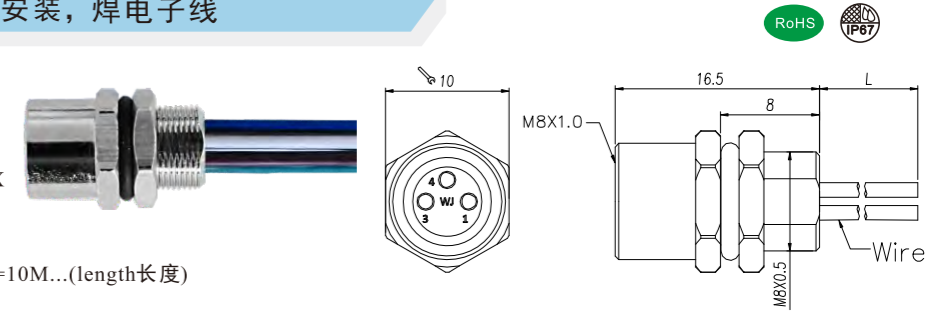
M8 Male Panel Mount, Solder Type, Rear Fastened With Wires
M8 公头面板式，焊接型，后锁安装，焊电子线

Connector Series 连接器系列: M8
Gender 类型: Male 公
Coding 编码: A, B
Locking Type 装配方式: Fix Screw 锁螺丝
Mounting Type 安装类型: Rear Fastened 后锁
Part No 产品编号: M08-X** -ST0-M02-BH2-XXX
X:A,B Coding(A,B扣)
**:03,04,05,06,08(Pin数)
BH2:2=M8x0.5(OD2)
XXX:050=0.5M,100=1M,10M=10M...(Length长度)



M8 Female Panel Mount, Solder Type, Rear Fastened With Wires
M8 母头面板式，焊接型，后锁安装，焊电子线

Connector Series 连接器系列: M8
Gender 类型: Female 母
Coding 编码: A, B
Locking Type 装配方式: Fix Screw 锁螺丝
Mounting Type 安装类型: Rear Fastened 后锁
Part No 产品编号: M08-X** -ST0-F02-BH2-XXX
X:A,B Coding(A,B扣)
**:03,04,05,06,08(Pin数)
BH2:2=M8x0.5(OD2)
XXX:050=0.5M,100=1M,10M=10M...(length长度)



General Information 基本信息

Technical data 技术参数

Standard 标准: IEC61076-2-104
Ambient Temperature 工作温度: -25°C~+85°C
Insulation Resistance 绝缘电阻: ≥100MΩ
Contact Resistance 接触电阻: ≤5mΩ
IP Class 防护等级: IP67
Mating Endurance 机械寿命: >100 Mating Cycles

Material Data 材质说明

Connector Carriers 胶芯材料: PA
Connector Contacts 接触端子: Copper Alloy With Gold Plated 铜镀金
Connector Nut/Screw 螺母/螺丝: Copper Alloy With Nickel Plated 铜镀镍
Seal/O-Ring 密封胶圈: FKM氟橡胶
Shielding 屏蔽: Unshielded 非屏蔽

General Information 基本信息

Technical data 技术参数

Standard 标准: IEC61076-2-104
Ambient Temperature 工作温度: -25°C~+85°C
Insulation Resistance 绝缘电阻: ≥100MΩ
Contact Resistance 接触电阻: ≤5mΩ
IP Class 防护等级: IP67
Mating Endurance 机械寿命: >100 Mating Cycles

Material Data 材质说明

Connector Carriers 胶芯材料: PA
Connector Contacts 接触端子: Copper Alloy With Gold Plated 铜镀金
Connector Nut/Screw 螺母/螺丝: Copper Alloy With Nickel Plated 铜镀镍
Seal/O-Ring 密封胶圈: FKM 氟橡胶
Shielding 屏蔽: Unshielded 非屏蔽

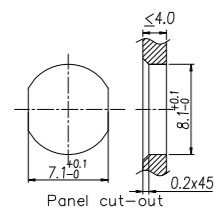
Electrical Data & Mechanical Data 电气参数&机械参数

Contacts Pin数	Available Coding 防插错编码	Rated Current 额定电流	Voltage 电压		Wire Range 接线范围		Part NO.产品编号
			AC	DC	AWG	mm ²	
03Pins	A-Coding	3A	50V	60V	24	0.25	M08-A03-ST0-M02-BH2-XXX
04Pins	A-Coding	3A	50V	60V	24	0.25	M08-A04-ST0-M02-BH2-XXX
05Pins	B-Coding	3A	30V	30V	24	0.25	M08-B05-ST0-M02-BH2-XXX
06Pins	A-Coding	1.5A	30V	30V	26	0.14	M08-A06-ST0-M02-BH2-XXX
08Pins	A-Coding	1.5A	30V	30V	26	0.14	M08-A08-ST0-M02-BH2-XXX

Electrical Data & Mechanical Data 电气参数&机械参数

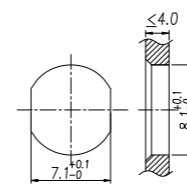
Contacts Pin数	Available Coding 防插错编码	Rated Current 额定电流	Voltage 电压		Wire Range 接线范围		Part NO.产品编号
			AC	DC	AWG	mm ²	
03Pins	A-Coding	3A	50V	60V	24	0.25	M08-A03-ST0-F02-BH2-XXX
04Pins	A-Coding	3A	50V	60V	24	0.25	M08-A04-ST0-F02-BH2-XXX
05Pins	B-Coding	3A	30V	30V	24	0.25	M08-B05-ST0-F02-BH2-XXX
06Pins	A-Coding	1.5A	30V	30V	26	0.14	M08-A06-ST0-F02-BH2-XXX
08Pins	A-Coding	1.5A	30V	30V	26	0.14	M08-A08-ST0-F02-BH2-XXX

M8 Connector



Panel cut-out 安装尺寸
M8X0.5
OD2: 8.1^{+0.1}₋₀

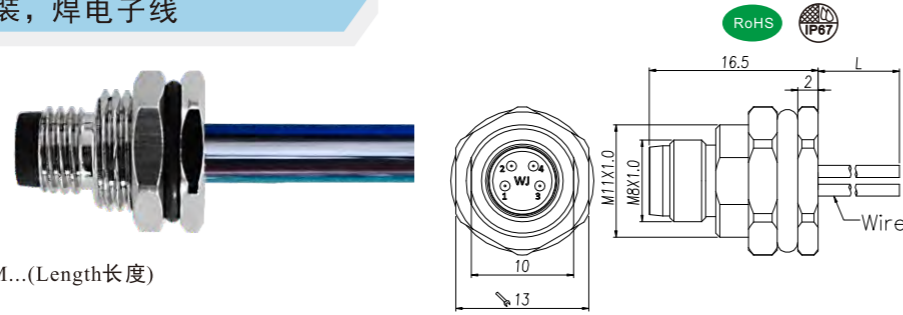
M8 Connector



Panel cut-out 安装尺寸
M8X0.5
OD2: 8.1^{+0.1}₋₀

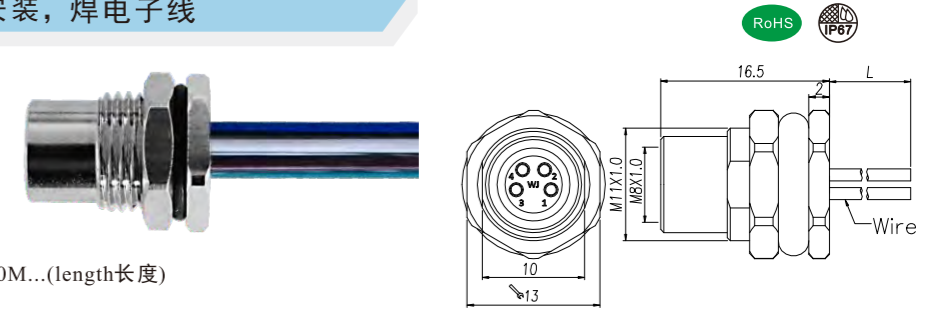
M8 Male Panel Mount, Solder Type, Front Fastened With Wires
M8 公头面板式，焊接型，前锁安装，焊电子线

Connector Series 连接器系列: M8
Gender 类型: Male 公
Coding 编码: A, B
Locking Type 装配方式: Fix Screw 锁螺丝
Mounting Type 安装类型: Front Fastened 前锁
Part No 产品编号: M08-X** -ST0-M02-BQ4-XXX
X:A,B Coding(A,B扣)
**:03,04,05,06,08(Pin数)
BQ4:4=M11x1.0(OD4)
XXX:050=0.5M,100=1M,10M=10M...(Length长度)



M8 Female Panel Mount, Solder Type, Front Fastened With Wires
M8 母头面板式，焊接型，前锁安装，焊电子线

Connector Series 连接器系列: M8
Gender 类型: Female 母
Coding 编码: A, B
Locking Type 装配方式: Fix Screw 锁螺丝
Mounting Type 安装类型: Front Fastened 前锁
Part No 产品编号: M08-X** -ST0-F02-BQ4-XXX
X:A,B Coding(A,B扣)
**:03,04,05,06,08(Pin数)
BQ4:4=M11x1.0(OD4)
XXX:050=0.5M,100=1M,10M=10M...(length长度)



General Information 基本信息

Technical data 技术参数

Standard 标准: IEC61076-2-104
Ambient Temperature 工作温度: -25°C~+85°C
Insulation Resistance 绝缘电阻: ≥100MΩ
Contact Resistance 接触电阻: ≤5mΩ
IP Class 防护等级: IP67
Mating Endurance 机械寿命: >100 Mating Cycles

Material Data 材质说明

Connector Carriers 胶芯材料: PA
Connector Contacts 接触端子: Copper Alloy With Gold Plated 铜镀金
Connector Nut/Screw 螺母/螺丝: Copper Alloy With Nickel Plated 铜镀镍
Seal/O-Ring 密封胶圈: FKM 氟橡胶
Shielding 屏蔽: Unshielded 非屏蔽

General Information 基本信息

Technical data 技术参数

Standard 标准: IEC61076-2-104
Ambient Temperature 工作温度: -25°C~+85°C
Insulation Resistance 绝缘电阻: ≥100MΩ
Contact Resistance 接触电阻: ≤5mΩ
IP Class 防护等级: IP67
Mating Endurance 机械寿命: >100 Mating Cycles

Material Data 材质说明

Connector Carriers 胶芯材料: PA
Connector Contacts 接触端子: Copper Alloy With Gold Plated 铜镀金
Connector Nut/Screw 螺母/螺丝: Copper Alloy With Nickel Plated 铜镀镍
Seal/O-Ring 密封胶圈: FKM 氟橡胶
Shielding 屏蔽: Unshielded 非屏蔽

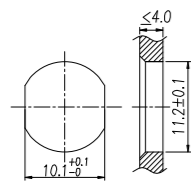
Electrical Data & Mechanical Data 电气参数&机械参数

Contacts Pin数	Available Coding 防插错编码	Rated Current 额定电流	Voltage 电压		Wire Range 接线范围		Part NO. 产品编号
			AC	DC	AWG	mm ²	
03Pins	A-Coding	3A	50V	60V	24	0.25	M08-A03-ST0-M02-BQ4-XXX
04Pins	A-Coding	3A	50V	60V	24	0.25	M08-A04-ST0-M02-BQ4-XXX
05Pins	B-Coding	3A	30V	30V	24	0.25	M08-B05-ST0-M02-BQ4-XXX
06Pins	A-Coding	1.5A	30V	30V	26	0.14	M08-A06-ST0-M02-BQ4-XXX
08Pins	A-Coding	1.5A	30V	30V	26	0.14	M08-A08-ST0-M02-BQ4-XXX

Electrical Data & Mechanical Data 电气参数&机械参数

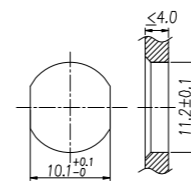
Contacts Pin数	Available Coding 防插错编码	Rated Current 额定电流	Voltage 电压		Wire Range 接线范围		Part NO. 产品编号
			AC	DC	AWG	mm ²	
03Pins	A-Coding	3A	50V	60V	24	0.25	M08-A03-ST0-F02-BQ4-XXX
04Pins	A-Coding	3A	50V	60V	24	0.25	M08-A04-ST0-F02-BQ4-XXX
05Pins	B-Coding	3A	30V	30V	24	0.25	M08-B05-ST0-F02-BQ4-XXX
06Pins	A-Coding	1.5A	30V	30V	26	0.14	M08-A06-ST0-F02-BQ4-XXX
08Pins	A-Coding	1.5A	30V	30V	26	0.14	M08-A08-ST0-F02-BQ4-XXX

M8 Connector



Panel cut-out 安装尺寸
M11x1.0
OD4: 11.2±0.1

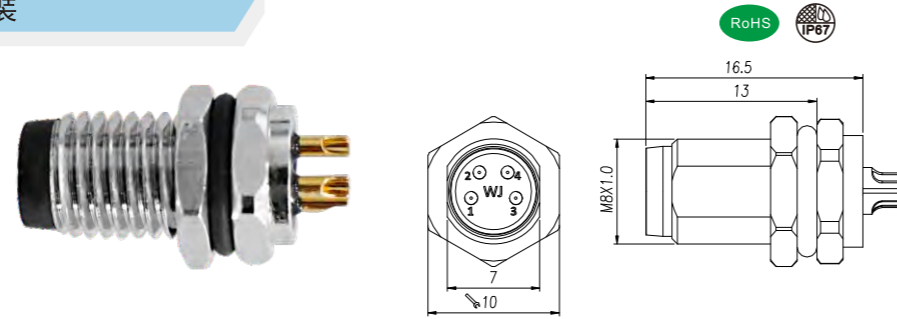
M8 Connector



Panel cut-out 安装尺寸
M11x1.0
OD4: 11.2±0.1

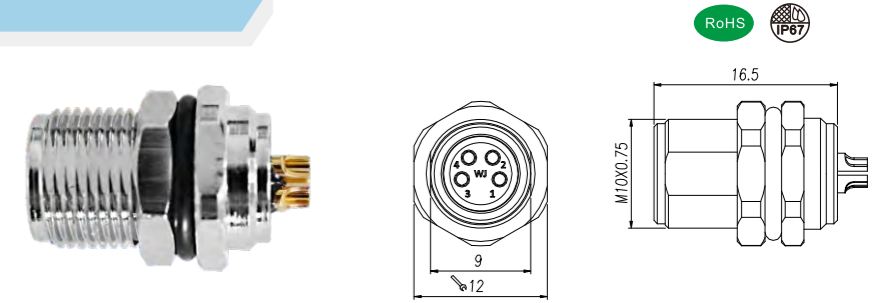
M8 Male Panel Mount, Solder Type, Front Fastened
M8 公头面板式，焊接型，前锁安装

Connector Series 连接器系列: M8
Gender 类型: Male 公
Coding 编码: A, B
Locking Type 装配方式: Fix Screw 锁螺丝
Mounting Type 安装类型: Front Fastened 前锁
Part No 产品编号: M08-X** -ST0-M02-BQ1
X:A,B Coding(A,B扣)
**:03,04,05,06,08(Pin数)
BQ1:1=M8x1.0(OD1)



M8 Female Panel Mount, Solder Type, Front Fastened
M8 母头面板式，焊接型，前锁安装

Connector Series 连接器系列: M8
Gender 类型: Female 母
Coding 编码: A, B
Locking Type 装配方式: Fix Screw 锁螺丝
Mounting Type 安装类型: Front Fastened 前锁
Part No 产品编号: M08-X** -ST0-F02-BQ3
X:A,B Coding(A,B扣)
**:03,04,05,06,08(Pin数)
BQ3:3=M10x0.75(OD3)



General Information 基本信息

Technical data 技术参数

Standard 标准: IEC61076-2-104
Ambient Temperature 工作温度: -25°C~+85°C
Insulation Resistance 绝缘电阻: $\geq 100M\Omega$
Contact Resistance 接触电阻: $\leq 5m\Omega$
IP Class 防护等级: IP67
Mating Endurance 机械寿命: >100 Mating Cycles

Material Data 材质说明

Connector Carriers 胶芯材料: PA
Connector Contacts 接触端子: Copper Alloy With Gold Plated 铜镀金
Connector Nut/Screw 螺母/螺丝: Copper Alloy With Nickel Plated 铜镀镍
Seal/O-Ring 密封胶圈: FKM氟橡胶
Shielding 屏蔽: Unshielded 非屏蔽

General Information 基本信息

Technical data 技术参数

Standard 标准: IEC61076-2-104
Ambient Temperature 工作温度: -25°C~+85°C
Insulation Resistance 绝缘电阻: $\geq 100M\Omega$
Contact Resistance 接触电阻: $\leq 5m\Omega$
IP Class 防护等级: IP67
Mating Endurance 机械寿命: >100 Mating Cycles

Material Data 材质说明

Connector Carriers 胶芯材料: PA
Connector Contacts 接触端子: Copper Alloy With Gold Plated 铜镀金
Connector Nut/Screw 螺母/螺丝: Copper Alloy With Nickel Plated 铜镀镍
Seal/O-Ring 密封胶圈: FKM 氟橡胶
Shielding 屏蔽: Unshielded 非屏蔽

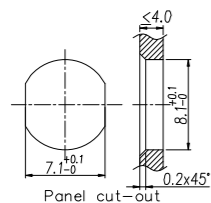
Electrical Data & Mechanical Data 电气参数&机械参数

Contacts Pin数	Available Coding 防插错编码	Rated Current 额定电流	Voltage 电压		Wire Range 接线范围		Part NO.产品编号
			AC	DC	AWG	mm ²	
03Pins	A-Coding	3A	50V	60V	24	0.25	M08-A03-ST0-M02-BQ1
04Pins	A-Coding	3A	50V	60V	24	0.25	M08-A04-ST0-M02-BQ1
05Pins	B-Coding	3A	30V	30V	24	0.25	M08-B05-ST0-M02-BQ1
06Pins	A-Coding	1.5A	30V	30V	26	0.14	M08-A06-ST0-M02-BQ1
08Pins	A-Coding	1.5A	30V	30V	26	0.14	M08-A08-ST0-M02-BQ1

Electrical Data & Mechanical Data 电气参数&机械参数

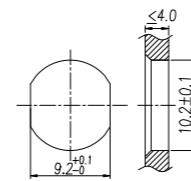
Contacts Pin数	Available Coding 防插错编码	Rated Current 额定电流	Voltage 电压		Wire Range 接线范围		Part NO.产品编号
			AC	DC	AWG	mm ²	
03Pins	A-Coding	3A	50V	60V	24	0.25	M08-A03-ST0-F02-BQ3
04Pins	A-Coding	3A	50V	60V	24	0.25	M08-A04-ST0-F02-BQ3
05Pins	B-Coding	3A	30V	30V	24	0.25	M08-B05-ST0-F02-BQ3
06Pins	A-Coding	1.5A	30V	30V	26	0.14	M08-A06-ST0-F02-BQ3
08Pins	A-Coding	1.5A	30V	30V	26	0.14	M08-A08-ST0-F02-BQ3

M8 Connector



Panel cut-out 安装尺寸
M8X1.0
OD1: 8.1 \pm 0.1

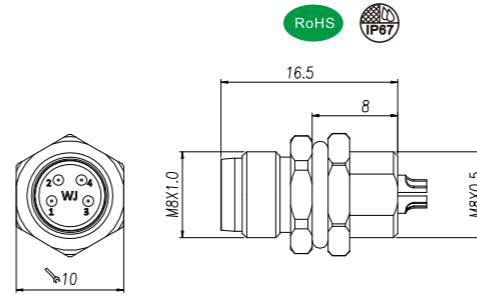
M8 Connector



Panel cut-out 安装尺寸
M10X0.75
OD3: 10.2 \pm 0.1

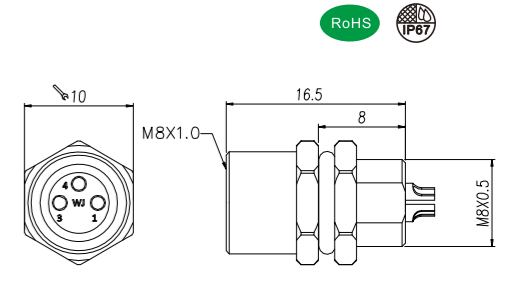
M8 Male Panel Mount, Solder Type, Rear Fastened
M8 公头面板式，焊接型，后锁安装

Connector Series 连接器系列: M8
Gender 类型: Male 公
Coding 编码: A, B
Locking Type 装配方式: Fix Screw 锁螺丝
Mounting Type 安装类型: Rear Fastened 后锁
Part No 产品编号: M08-X** -ST0-M02-BH2
X:A,B Coding(A,B扣)
**:03,04,05,06,08(Pin数)
BH2:2=M8x0.5(OD2)



M8 Female Panel Mount, Solder Type, Rear Fastened
M8 母头面板式，焊接型，后锁安装

Connector Series 连接器系列: M8
Gender 类型: Female 母
Coding 编码: A, B
Locking Type 装配方式: Fix Screw 锁螺丝
Mounting Type 安装类型: Rear Fastened 后锁
Part No 产品编号: M08-X** -ST0-F02-BH2
X:A,B Coding(A,B扣)
**:03,04,05,06,08(Pin数)
BH2:2=M8x0.5(OD2)



General Information 基本信息

Technical data 技术参数

Standard 标准: IEC61076-2-104
Ambient Temperature 工作温度: -25°C~+85°C
Insulation Resistance 绝缘电阻: ≥100MΩ
Contact Resistance 接触电阻: ≤5mΩ
IP Class 防护等级: IP67
Mating Endurance 机械寿命: >100 Mating Cycles

Material Data 材质说明

Connector Carriers 胶芯材料: PA
Connector Contacts 接触端子: Copper Alloy With Gold Plated 铜镀金
Connector Nut/Screw 螺母/螺丝: Copper Alloy With Nickel Plated 铜镀镍
Seal/O-Ring 密封胶圈: FKM氟橡胶
Shielding 屏蔽: Unshielded 非屏蔽

General Information 基本信息

Technical data 技术参数

Standard 标准: IEC61076-2-104
Ambient Temperature 工作温度: -25°C~+85°C
Insulation Resistance 绝缘电阻: ≥100MΩ
Contact Resistance 接触电阻: ≤5mΩ
IP Class 防护等级: IP67
Mating Endurance 机械寿命: >100 Mating Cycles

Material Data 材质说明

Connector Carriers 胶芯材料: PA
Connector Contacts 接触端子: Copper Alloy With Gold Plated 铜镀金
Connector Nut/Screw 螺母/螺丝: Copper Alloy With Nickel Plated 铜镀镍
Seal/O-Ring 密封胶圈: FKM 氟橡胶
Shielding 屏蔽: Unshielded 非屏蔽

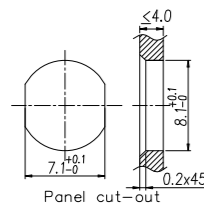
Electrical Data & Mechanical Data 电气参数&机械参数

Contacts Pin数	Available Coding 防插错编码	Rated Current 额定电流	Voltage 电压		Wire Range 接线范围		Part NO.产品编号
			AC	DC	AWG	mm ²	
03Pins	A-Coding	3A	50V	60V	24	0.25	M08-A03-ST0-M02-BH2
04Pins	A-Coding	3A	50V	60V	24	0.25	M08-A04-ST0-M02-BH2
05Pins	B-Coding	3A	30V	30V	24	0.25	M08-B05-ST0-M02-BH2
06Pins	A-Coding	1.5A	30V	30V	26	0.14	M08-A06-ST0-M02-BH2
08Pins	A-Coding	1.5A	30V	30V	26	0.14	M08-A08-ST0-M02-BH2

Electrical Data & Mechanical Data 电气参数&机械参数

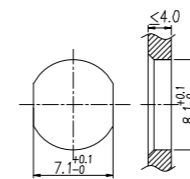
Contacts Pin数	Available Coding 防插错编码	Rated Current 额定电流	Voltage 电压		Wire Range 接线范围		Part NO.产品编号
			AC	DC	AWG	mm ²	
03Pins	A-Coding	3A	50V	60V	24	0.25	M08-A03-ST0-F02-BH2
04Pins	A-Coding	3A	50V	60V	24	0.25	M08-A04-ST0-F02-BH2
05Pins	B-Coding	3A	30V	30V	24	0.25	M08-B05-ST0-F02-BH2
06Pins	A-Coding	1.5A	30V	30V	26	0.14	M08-A06-ST0-F02-BH2
08Pins	A-Coding	1.5A	30V	30V	26	0.14	M08-A08-ST0-F02-BH2

M8 Connector



Panel cut-out 安装尺寸
M8X0.5
OD2: 8.1^{+0.1}₋₀

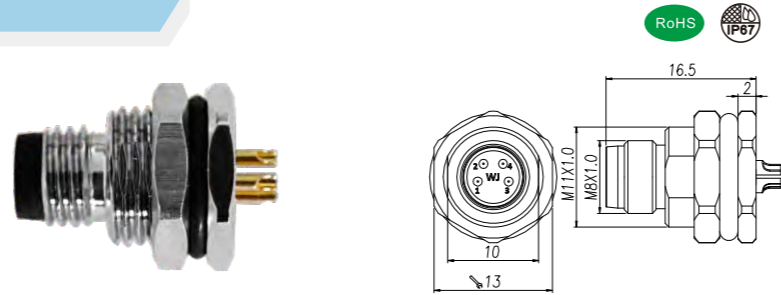
M8 Connector



Panel cut-out 安装尺寸
M8X0.5
OD2: 8.1^{+0.1}₋₀

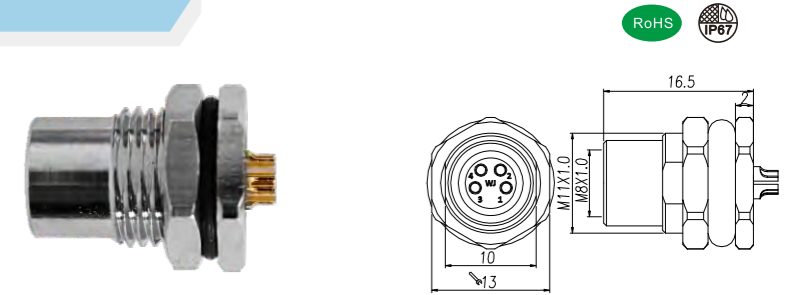
M8 Male Panel Mount, Solder Type, Front Fastened
M8 公头面板式，焊接型，前锁安装

Connector Series 连接器系列: M8
Gender 类型: Male 公
Coding 编码: A, B
Locking Type 装配方式: Fix Screw 锁螺丝
Mounting Type 安装类型: Front Fastened 前锁
Part No 产品编号: M08-X** -ST0-M02-BQ4
X:A,B Coding(A,B扣)
**:03,04,05,06,08(Pin数)
BQ4:4=M11x1.0(OD4)



M8 Female Panel Mount, Solder Type, Front Fastened
M8 母头面板式，焊接型，前锁安装

Connector Series 连接器系列: M8
Gender 类型: Female 母
Coding 编码: A, B
Locking Type 装配方式: Fix Screw 锁螺丝
Mounting Type 安装类型: Front Fastened 前锁
Part No 产品编号: M08-X** -ST0-F02-BQ4
X:A,B Coding(A,B扣)
**:03,04,05,06,08(Pin数)
BQ4:4=M11x1.0(OD4)



General Information 基本信息

Technical data 技术参数

Standard 标准: IEC61076-2-104
Ambient Temperature 工作温度: -25°C~+85°C
Insulation Resistance 绝缘电阻: ≥100MΩ
Contact Resistance 接触电阻: ≤5mΩ
IP Class 防护等级: IP67
Mating Endurance 机械寿命: >100 Mating Cycles

Material Data 材质说明

Connector Carriers 胶芯材料: PA
Connector Contacts 接触端子: Copper Alloy With Gold Plated 铜镀金
Connector Nut/Screw 螺母/螺丝: Copper Alloy With Nickel Plated 铜镀镍
Seal/O-Ring 密封胶圈: FKM氟橡胶
Shielding 屏蔽: Unshielded 非屏蔽

General Information 基本信息

Technical data 技术参数

Standard 标准: IEC61076-2-104
Ambient Temperature 工作温度: -25°C~+85°C
Insulation Resistance 绝缘电阻: ≥100MΩ
Contact Resistance 接触电阻: ≤5mΩ
IP Class 防护等级: IP67
Mating Endurance 机械寿命: >100 Mating Cycles

Material Data 材质说明

Connector Carriers 胶芯材料: PA
Connector Contacts 接触端子: Copper Alloy With Gold Plated 铜镀金
Connector Nut/Screw 螺母/螺丝: Copper Alloy With Nickel Plated 铜镀镍
Seal/O-Ring 密封胶圈: FKM 氟橡胶
Shielding 屏蔽: Unshielded 非屏蔽

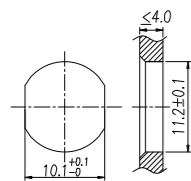
Electrical Data & Mechanical Data 电气参数&机械参数

Contacts Pin数	Available Coding 防插错编码	Rated Current 额定电流	Voltage 电压		Wire Range 接线范围		Part NO.产品编号
			AC	DC	AWG	mm ²	
03Pins	A-Coding	3A	50V	60V	24	0.25	M08-A03-ST0-M02-BQ4
04Pins	A-Coding	3A	50V	60V	24	0.25	M08-A04-ST0-M02-BQ4
05Pins	B-Coding	3A	30V	30V	24	0.25	M08-B05-ST0-M02-BQ4
06Pins	A-Coding	1.5A	30V	30V	26	0.14	M08-A06-ST0-M02-BQ4
08Pins	A-Coding	1.5A	30V	30V	26	0.14	M08-A08-ST0-M02-BQ4

Electrical Data & Mechanical Data 电气参数&机械参数

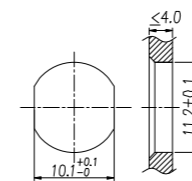
Contacts Pin数	Available Coding 防插错编码	Rated Current 额定电流	Voltage 电压		Wire Range 接线范围		Part NO.产品编号
			AC	DC	AWG	mm ²	
03Pins	A-Coding	3A	50V	60V	24	0.25	M08-A03-ST0-F02-BQ4
04Pins	A-Coding	3A	50V	60V	24	0.25	M08-A04-ST0-F02-BQ4
05Pins	B-Coding	3A	30V	30V	24	0.25	M08-B05-ST0-F02-BQ4
06Pins	A-Coding	1.5A	30V	30V	26	0.14	M08-A06-ST0-F02-BQ4
08Pins	A-Coding	1.5A	30V	30V	26	0.14	M08-A08-ST0-F02-BQ4

M8 Connector



Panel cut-out 安装尺寸
M11X1.0
OD4:11.2±0.1

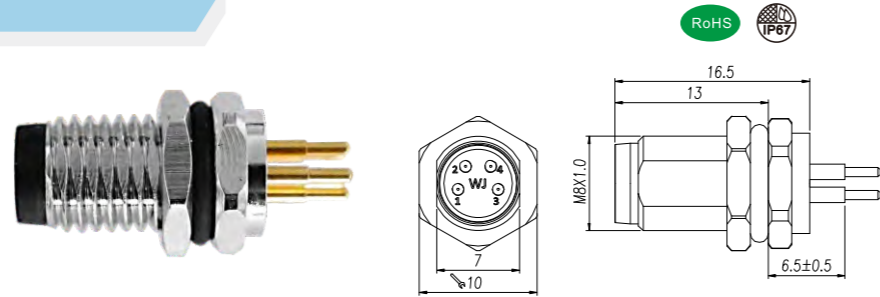
M8 Connector



Panel cut-out 安装尺寸
M11X1.0
OD4:11.2±0.1

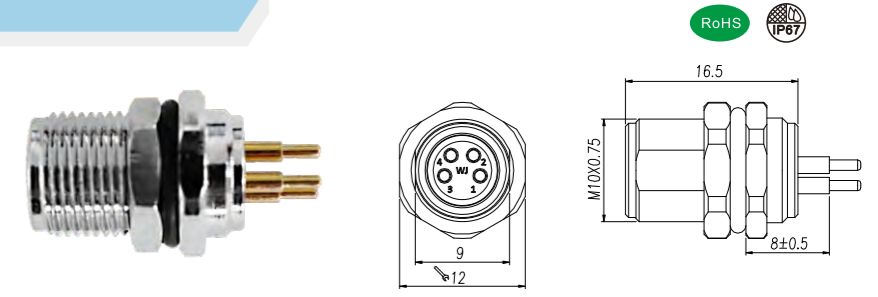
M8 Male Panel Mount, PCB Type, Front Fastened
M8 公头面板式, PCB型, 前锁安装

Connector Series 连接器系列: M8
Gender 类型: Male 公
Coding 编码: A, B
Locking Type 装配方式: Fix Screw 锁螺丝
Mounting Type 安装类型: Front Fastened 前锁
Part No 产品编号: M08-X** -ST0-M01-BQ1
X:A,B Coding(A,B扣)
**:03,04,05,06,08(Pin数)
BQ1:1=M8x1.0(OD1)



M8 Female Panel Mount, PCB Type, Front Fastened
M8 母头面板式, PCB型, 前锁安装

Connector Series 连接器系列: M8
Gender 类型: Female 母
Coding 编码: A, B
Locking Type 装配方式: Fix Screw 锁螺丝
Mounting Type 安装类型: Front Fastened 前锁
Part No 产品编号: M08-X** -ST0-F01-BQ3
X:A,B Coding(A,B扣)
**:03,04,05,06,08(Pin数)
BQ3:3=M10x0.75(OD3)



General Information 基本信息

Technical data 技术参数

Standard 标准: IEC61076-2-104
Ambient Temperature 工作温度: -25°C~+85°C
Insulation Resistance 绝缘电阻: ≥100MΩ
Contact Resistance 接触电阻: ≤5mΩ
IP Class 防护等级: IP67
Mating Endurance 机械寿命: >100 Mating Cycles

Material Data 材质说明

Connector Carriers 胶芯材料: PA
Connector Contacts 接触端子: Copper Alloy With Gold Plated 铜镀金
Connector Nut/Screw 螺母/螺丝: Copper Alloy With Nickel Plated 铜镀镍
Seal/O-Ring 密封胶圈: FKM氟橡胶
Shielding 屏蔽: Unshielded 非屏蔽

General Information 基本信息

Technical data 技术参数

Standard 标准: IEC61076-2-104
Ambient Temperature 工作温度: -25°C~+85°C
Insulation Resistance 绝缘电阻: ≥100MΩ
Contact Resistance 接触电阻: ≤5mΩ
IP Class 防护等级: IP67
Mating Endurance 机械寿命: >100 Mating Cycles

Material Data 材质说明

Connector Carriers 胶芯材料: PA
Connector Contacts 接触端子: Copper Alloy With Gold Plated 铜镀金
Connector Nut/Screw 螺母/螺丝: Copper Alloy With Nickel Plated 铜镀镍
Seal/O-Ring 密封胶圈: FKM 氟橡胶
Shielding 屏蔽: Unshielded 非屏蔽

Electrical Data & Mechanical Data 电气参数&机械参数

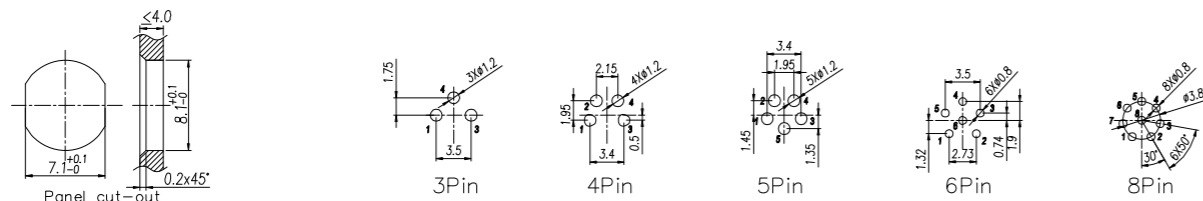
Contacts Pin数	Available Coding 防插错编码	Rated Current 额定电流	Voltage 电压		Contacts Termination 连接方式	Part NO.产品编号
			AC	DC		
03Pins	 A-Coding	3A	50V	60V	PCB Version	M08-A03-ST0-M01-BQ1
04Pins	 A-Coding	3A	50V	60V	PCB Version	M08-A04-ST0-M01-BQ1
05Pins	 B-Coding	3A	30V	30V	PCB Version	M08-B05-ST0-M01-BQ1
06Pins	 A-Coding	1.5A	30V	30V	PCB Version	M08-A06-ST0-M01-BQ1
08Pins	 A-Coding	1.5A	30V	30V	PCB Version	M08-A08-ST0-M01-BQ1

Electrical Data & Mechanical Data 电气参数&机械参数

Contacts Pin数	Available Coding 防插错编码	Rated Current 额定电流	Voltage 电压		Contacts Termination 连接方式	Part NO.产品编号
			AC	DC		
03Pins	 A-Coding	3A	50V	60V	PCB Version	M08-A03-ST0-F01-BQ3
04Pins	 A-Coding	3A	50V	60V	PCB Version	M08-A04-ST0-F01-BQ3
05Pins	 B-Coding	3A	30V	30V	PCB Version	M08-B05-ST0-F01-BQ3
06Pins	 A-Coding	1.5A	30V	30V	PCB Version	M08-A06-ST0-F01-BQ3
08Pins	 A-Coding	1.5A	30V	30V	PCB Version	M08-A08-ST0-F01-BQ3

M8 Connector

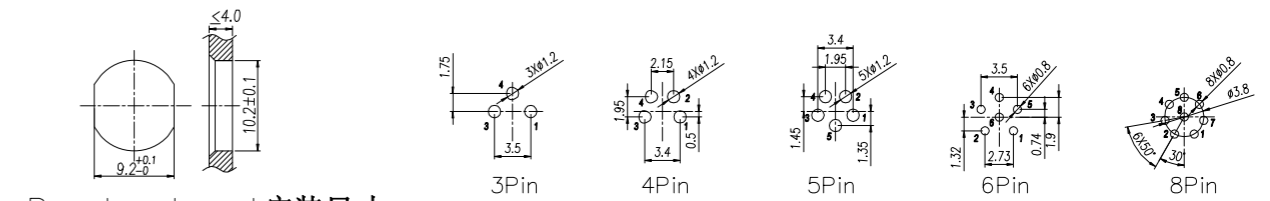
PCB Layout:



Panel cut-out 安装尺寸
M8X1.0
OD1: 8.1±0.1

M8 Connector

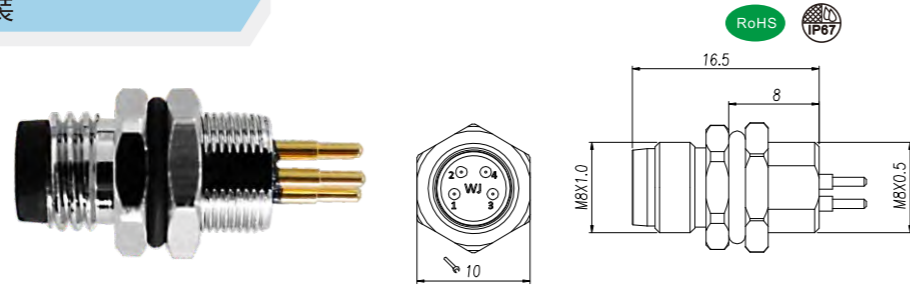
PCB Layout:



Panel cut-out 安装尺寸
M10X0.75
OD3: 10.2±0.1

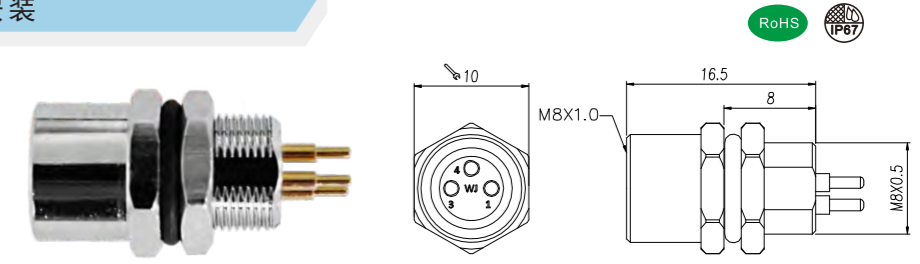
M8 Male Panel Mount, PCB Type, Rear Fastened
M8 公头面板式, PCB型, 后锁安装

Connector Series 连接器系列: M8
Gender 类型: Male 公
Coding 编码: A, B
Locking Type 装配方式: Fix Screw 锁螺丝
Mounting Type 安装类型: Rear Fastened 后锁
Part No 产品编号: M08-X** -ST0-M01-BH2
X:A,B Coding(A,B扣)
**:03,04,05,06,08 (Pin数)
BH2:2=M8x0.5(OD2)



M8 Female Panel Mount, PCB Type, Rear Fastened
M8 母头面板式, PCB型, 后锁安装

Connector Series 连接器系列: M8
Gender 类型: Female 母
Coding 编码: A, B
Locking Type 装配方式: Fix Screw 锁螺丝
Mounting Type 安装类型: Rear Fastened 后锁
Part No 产品编号: M08-X** -ST0-F01-BH2
X:A,B Coding(A,B扣)
**:03,04,05,06,08 (Pin数)
BH2:2=M8x0.5(OD2)



General Information 基本信息

Technical data 技术参数

Standard 标准: IEC61076-2-104
Ambient Temperature 工作温度: -25°C~+85°C
Insulation Resistance 绝缘电阻: ≥100MΩ
Contact Resistance 接触电阻: ≤5mΩ
IP Class 防护等级: IP67
Mating Endurance 机械寿命: >100 Mating Cycles

Material Data 材质说明

Connector Carriers 胶芯材料: PA
Connector Contacts 接触端子: Copper Alloy With Gold Plated 铜镀金
Connector Nut/Screw 螺母/螺丝: Copper Alloy With Nickel Plated 铜镀镍
Seal/O-Ring 密封胶圈: FKM氟橡胶
Shielding 屏蔽: Unshielded 非屏蔽

General Information 基本信息

Technical data 技术参数

Standard 标准: IEC61076-2-104
Ambient Temperature 工作温度: -25°C~+85°C
Insulation Resistance 绝缘电阻: ≥100MΩ
Contact Resistance 接触电阻: ≤5mΩ
IP Class 防护等级: IP67
Mating Endurance 机械寿命: >100 Mating Cycles

Material Data 材质说明

Connector Carriers 胶芯材料: PA
Connector Contacts 接触端子: Copper Alloy With Gold Plated 铜镀金
Connector Nut/Screw 螺母/螺丝: Copper Alloy With Nickel Plated 铜镀镍
Seal/O-Ring 密封胶圈: FKM 氟橡胶
Shielding 屏蔽: Unshielded 非屏蔽

Electrical Data & Mechanical Data 电气参数&机械参数

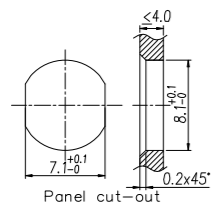
Contacts Pin数	Available Coding 防插错编码	Rated Current 额定电流	Voltage 电压		Contacts Termination 连接方式	Part NO.产品编号
			AC	DC		
03Pins	A-Coding	3A	50V	60V	PCB Version	M08-A03-ST0-M01-BH2
04Pins	A-Coding	3A	50V	60V	PCB Version	M08-A04-ST0-M01-BH2
05Pins	B-Coding	3A	30V	30V	PCB Version	M08-B05-ST0-M01-BH2
06Pins	A-Coding	1.5A	30V	30V	PCB Version	M08-A06-ST0-M01-BH2
08Pins	A-Coding	1.5A	30V	30V	PCB Version	M08-A08-ST0-M01-BH2

Electrical Data & Mechanical Data 电气参数&机械参数

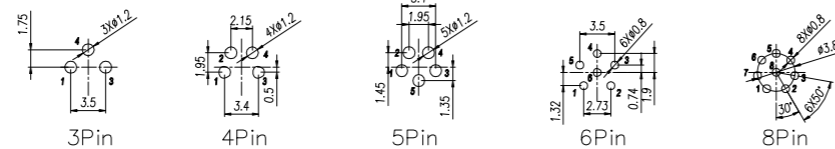
Contacts Pin数	Available Coding 防插错编码	Rated Current 额定电流	Voltage 电压		Contacts Termination 连接方式	Part NO.产品编号
			AC	DC		
03Pins	A-Coding	3A	50V	60V	PCB Version	M08-A03-ST0-F01-BH2
04Pins	A-Coding	3A	50V	60V	PCB Version	M08-A04-ST0-F01-BH2
05Pins	B-Coding	3A	30V	30V	PCB Version	M08-B05-ST0-F01-BH2
06Pins	A-Coding	1.5A	30V	30V	PCB Version	M08-A06-ST0-F01-BH2
08Pins	A-Coding	1.5A	30V	30V	PCB Version	M08-A08-ST0-F01-BH2

M8 Connector

PCB Layout:

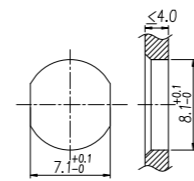


Panel cut-out 安装尺寸
M8X0.5
OD2: 8.1±0.1

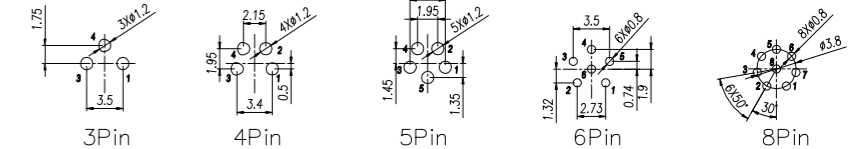


M8 Connector

PCB Layout:

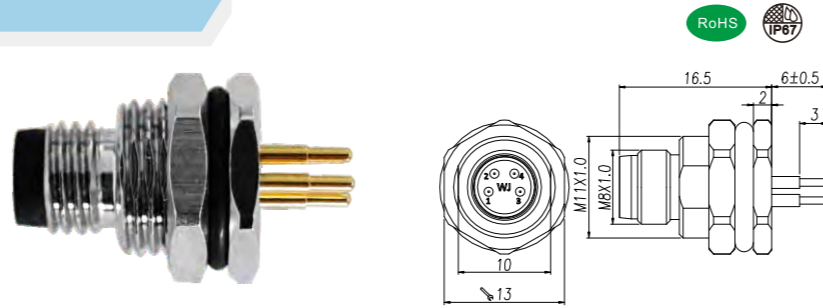


Panel cut-out 安装尺寸
M8X0.5
OD2: 8.1±0.1



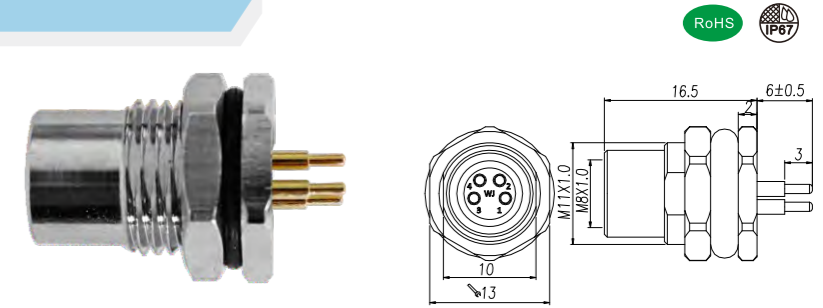
M8 Male Panel Mount, PCB Type, Front Fastened
M8 公头面板式, PCB型, 前锁安装

Connector Series 连接器系列: M8
Gender 类型: Male 公
Coding 编码: A, B
Locking Type 装配方式: Fix Screw 锁螺丝
Mounting Type 安装类型: Front Fastened 前锁
Part No 产品编号: M08-X** -ST0-M01-BQ4
X:A,B Coding(A,B扣)
**:03,04,05,06,08(Pin数)
BQ4:4=M11x1.0(OD4)



M8 Female Panel Mount, PCB Type, Front Fastened
M8 母头面板式, PCB型, 前锁安装

Connector Series 连接器系列: M8
Gender 类型: Female 母
Coding 编码: A, B
Locking Type 装配方式: Fix Screw 锁螺丝
Mounting Type 安装类型: Front Fastened 前锁
Part No 产品编号: M08-X** -ST0-F01-BQ4
X:A,B Coding(A,B扣)
**:03,04,05,06,08(Pin数)
BQ4:4=M11x1.0(OD4)



General Information 基本信息

Technical data 技术参数

Standard 标准: IEC61076-2-104
Ambient Temperature 工作温度: -25°C~+85°C
Insulation Resistance 绝缘电阻: ≥100MΩ
Contact Resistance 接触电阻: ≤5mΩ
IP Class 防护等级: IP67
Mating Endurance 机械寿命: >100 Mating Cycles

Material Data 材质说明

Connector Carriers 胶芯材料: PA
Connector Contacts 接触端子: Copper Alloy With Gold Plated 铜镀金
Connector Nut/Screw 螺母/螺丝: Copper Alloy With Nickel Plated 铜镀镍
Seal/O-Ring 密封胶圈: FKM氟橡胶
Shielding 屏蔽: Unshielded 非屏蔽

General Information 基本信息

Technical data 技术参数

Standard 标准: IEC61076-2-104
Ambient Temperature 工作温度: -25°C~+85°C
Insulation Resistance 绝缘电阻: ≥100MΩ
Contact Resistance 接触电阻: ≤5mΩ
IP Class 防护等级: IP67
Mating Endurance 机械寿命: >100 Mating Cycles

Material Data 材质说明

Connector Carriers 胶芯材料: PA
Connector Contacts 接触端子: Copper Alloy With Gold Plated 铜镀金
Connector Nut/Screw 螺母/螺丝: Copper Alloy With Nickel Plated 铜镀镍
Seal/O-Ring 密封胶圈: FKM 氟橡胶
Shielding 屏蔽: Unshielded 非屏蔽

Electrical Data & Mechanical Data 电气参数&机械参数

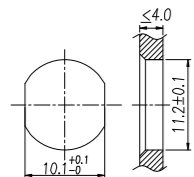
Contacts Pin数	Available Coding 防插错编码	Rated Current 额定电流	Voltage 电压		Contacts Termination 连接方式	Part NO.产品编号
			AC	DC		
03Pins	A-Coding	3A	50V	60V	PCB Version	M08-A03-ST0-M01-BQ4
04Pins	A-Coding	3A	50V	60V	PCB Version	M08-A04-ST0-M01-BQ4
05Pins	B-Coding	3A	30V	30V	PCB Version	M08-B05-ST0-M01-BQ4
06Pins	A-Coding	1.5A	30V	30V	PCB Version	M08-A06-ST0-M01-BQ4
08Pins	A-Coding	1.5A	30V	30V	PCB Version	M08-A08-ST0-M01-BQ4

Electrical Data & Mechanical Data 电气参数&机械参数

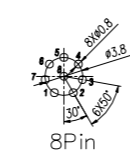
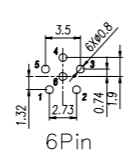
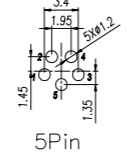
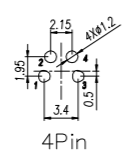
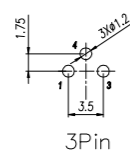
Contacts Pin数	Available Coding 防插错编码	Rated Current 额定电流	Voltage 电压		Contacts Termination 连接方式	Part NO.产品编号
			AC	DC		
03Pins	A-Coding	3A	50V	60V	PCB Version	M08-A03-ST0-F01-BQ4
04Pins	A-Coding	3A	50V	60V	PCB Version	M08-A04-ST0-F01-BQ4
05Pins	B-Coding	3A	30V	30V	PCB Version	M08-B05-ST0-F01-BQ4
06Pins	A-Coding	1.5A	30V	30V	PCB Version	M08-A06-ST0-F01-BQ4
08Pins	A-Coding	1.5A	30V	30V	PCB Version	M08-A08-ST0-F01-BQ4

M8 Connector

PCB Layout:

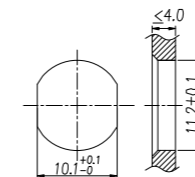


Panel cut-out 安装尺寸
M11X1.0
OD4:11.2±0.1

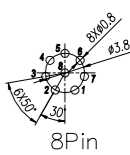
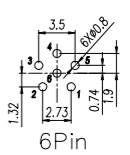
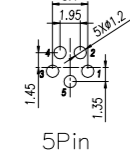
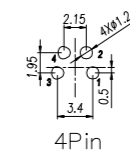
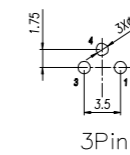


M8 Connector

PCB Layout:

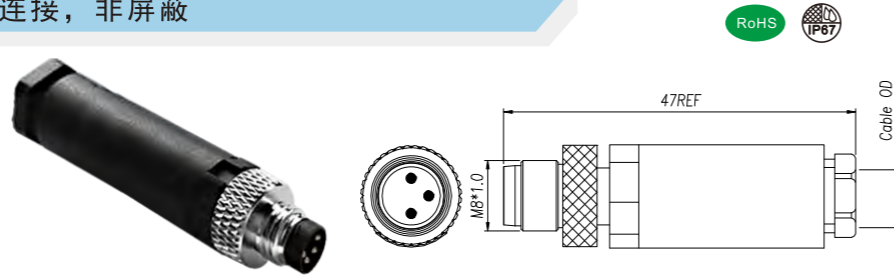


Panel cut-out 安装尺寸
M11X1.0
OD4:11.2±0.1



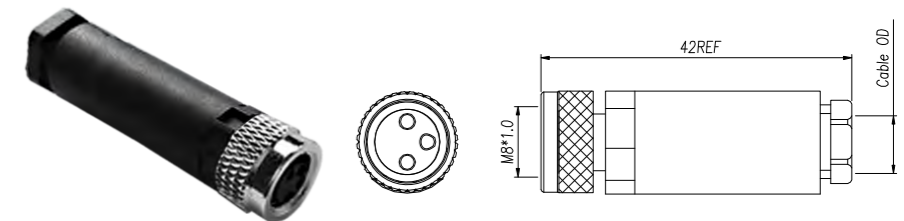
M8 Male Straight Field Assemble, Terminal Locking Screw Type, Unshielded
M8 公头直头组装式，端子锁螺钉连接，非屏蔽

Connector Series 连接器系列: M8
Gender 类型: Male 公
Coding 编码: A
Locking Type 装配方式: Fix Screw 锁螺丝
Mounting Type 安装类型: Field Assemble 组装式
Part No 产品编号: M08-X** -ST0-M04-PS1
X:A Coding(A扣)
**:03,04 (Pin数)
PS1:1=Cable OD3.5-5.0MM



M8 Female Straight Field Assemble, Terminal Locking Screw Type, Unshielded
M8 母头直头组装式，端子锁螺钉连接，非屏蔽

Connector Series 连接器系列: M8
Gender 类型: Female 母
Coding 编码: A
Locking Type 装配方式: Fix Screw 锁螺丝
Mounting Type 安装类型: Field Assemble 组装式
Part No 产品编号: M08-X** -ST0-F04-PS1
X:A Coding(A扣)
**:03,04 (Pin数)
PS1:1=Cable OD3.5-5.0MM



General Information 基本信息

Technical data 技术参数

Standard 标准: IEC61076
Ambient Temperature 工作温度: -25°C~+105°C
Insulation Resistance 绝缘电阻: ≥100MΩ
Contact Resistance 接触电阻: ≤10mΩ
IP Class 防护等级: IP67
Mating Endurance 机械寿命: >100 Mating Cycles

Material Data 材质说明

Connector Carriers 主体材料: Plastic 塑胶 (PA)
Connector Contacts 接触端子: Copper Alloy With Gold Plated 铜镀金
Connector Nut/Screw 螺母/螺丝: Copper Alloy With Nickel Plated 铜镀镍
Seal/O-Ring 密封胶圈: FKM氟橡胶
Shielding 屏蔽: Unshielded 非屏蔽
Contacts Termination 连接方式: Terminal Locking Screw 锁螺钉连接

Electrical Data & Mechanical Data 电气参数&机械参数

Contacts Pin数	Available Coding 防插错编码	Rated Current 额定电流	Voltage 电压		Wire Range 接线范围		Part NO.产品编号
			AC	DC	AWG	mm ²	
03Pins	A-Coding	3A	50V	60V	24	0.25	M08-A03-ST0-M04-PS1
04Pins	A-Coding	3A	50V	60V	24	0.25	M08-A04-ST0-M04-PS1

Component Part Drawing 零件示意图



General Information 基本信息

Technical data 技术参数

Standard 标准: IEC61076
Ambient Temperature 工作温度: -25°C~+105°C
Insulation Resistance 绝缘电阻: ≥100MΩ
Contact Resistance 接触电阻: ≤10mΩ
IP Class 防护等级: IP67
Mating Endurance 机械寿命: >100 Mating Cycles

Material Data 材质说明

Connector Carriers 主体材料: Plastic 塑胶 (PA)
Connector Contacts 接触端子: Copper Alloy With Gold Plated 铜镀金
Connector Nut/Screw 螺母/螺丝: Copper Alloy With Nickel Plated 铜镀镍
Seal/O-Ring 密封胶圈: FKM氟橡胶
Shielding 屏蔽: Unshielded 非屏蔽
Contacts Termination 连接方式: Terminal Locking Screw 锁螺钉连接

Electrical Data & Mechanical Data 电气参数&机械参数

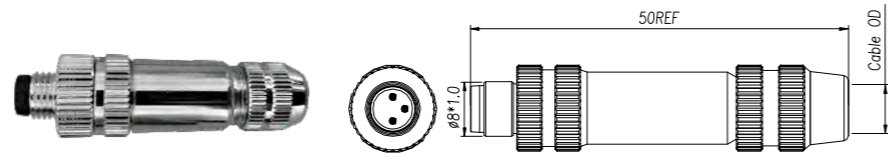
Contacts Pin数	Available Coding 防插错编码	Rated Current 额定电流	Voltage 电压		Wire Range 接线范围		Part NO.产品编号
			AC	DC	AWG	mm ²	
03Pins	A-Coding	3A	50V	60V	24	0.25	M08-A03-ST0-F04-PS1
04Pins	A-Coding	3A	50V	60V	24	0.25	M08-A04-ST0-F04-PS1

Component Part Drawing 零件示意图



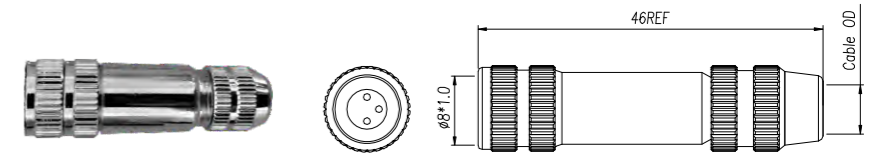
M8 Male Straight Field Assemble, Terminal Locking Screw Type, Shielded
M8 公头直头组装式，端子锁螺钉连接，屏蔽

Connector Series 连接器系列: M8
Gender 类型: Male 公
Coding 编码: A
Locking Type 装配方式: Fix Screw 锁螺丝
Mounting Type 安装类型: Field Assemble 组装式
Part No 产品编号: M08-X** -ST2-M04-ZS1
X:A Coding(A扣)
**:03,04(Pin数)
ZS1:1=Cable OD3.5-5.0MM



M8 Female Straight Field Assemble, Terminal Locking Screw Type, Shielded
M8 母头直头组装式，端子锁螺钉连接，屏蔽

Connector Series 连接器系列: M8
Gender 类型: Female 母
Coding 编码: A
Locking Type 装配方式: Fix Screw 锁螺丝
Mounting Type 安装类型: Field Assemble 组装式
Part No 产品编号: M08-X** -ST2-M04-ZS1
X:A Coding(A扣)
**:03,04(Pin数)
ZS1:1=Cable OD3.5-5.0MM



General Information 基本信息

Technical data 技术参数

Standard 标准: IEC61076
Ambient Temperature 工作温度: -25°C~+105°C
Insulation Resistance 绝缘电阻: ≥100MΩ
Contact Resistance 接触电阻: ≤10mΩ
IP Class 防护等级: IP67
Mating Endurance 机械寿命: >100 Mating Cycles

Material Data 材质说明

Connector Carriers 主体材料: Zn Alloy With Nickel Plated 锌合金镀镍
Connector Contacts 接触端子: Copper Alloy With Gold Plated 铜镀金
Connector Nut/Screw 螺母/螺丝: Zn Alloy With Nickel Plated 锌合金镀镍
Seal/O-Ring 密封胶圈: FKM氟橡胶
Shielding 屏蔽: Shielded 屏蔽
Contacts Termination 连接方式: Terminal Locking Screw 锁螺钉连接

Electrical Data & Mechanical Data 电气参数&机械参数

Contacts Pin数	Available Coding 防插错编码	Rated Current 额定电流	Voltage 电压		Wire Range 接线范围		Part NO.产品编号
			AC	DC	AWG	mm ²	
03Pins	A-Coding	3A	50V	60V	24	0.25	M08-A03-ST2-M04-ZS1
04Pins	A-Coding	3A	50V	60V	24	0.25	M08-A04-ST2-M04-ZS1

Component Part Drawing 零件示意图



General Information 基本信息

Technical data 技术参数

Standard 标准: IEC61076
Ambient Temperature 工作温度: -25°C~+105°C
Insulation Resistance 绝缘电阻: ≥100MΩ
Contact Resistance 接触电阻: ≤10mΩ
IP Class 防护等级: IP67
Mating Endurance 机械寿命: >100 Mating Cycles

Material Data 材质说明

Connector Carriers 主体材料: Zn Alloy With Nickel Plated 锌合金镀镍
Connector Contacts 接触端子: Copper Alloy With Gold Plated 铜镀金
Connector Nut/Screw 螺母/螺丝: Zn Alloy With Nickel Plated 锌合金镀镍
Seal/O-Ring 密封胶圈: FKM氟橡胶
Shielding 屏蔽: Shielded 屏蔽
Contacts Termination 连接方式: Terminal Locking Screw 锁螺钉连接

Electrical Data & Mechanical Data 电气参数&机械参数

Contacts Pin数	Available Coding 防插错编码	Rated Current 额定电流	Voltage 电压		Wire Range 接线范围		Part NO.产品编号
			AC	DC	AWG	mm ²	
03Pins	A-Coding	3A	50V	60V	24	0.25	M08-A03-ST2-F04-ZS1
04Pins	A-Coding	3A	50V	60V	24	0.25	M08-A04-ST2-F04-ZS1

Component Part Drawing 零件示意图



Product advantages

1. The overall dimension of the product is small and the occupied space is limited.
2. Screw Twist butt connection, stable electrical performance, can be used in continuous impact, vibration and other application environments.
3. The sealing performance can reach IP67 protection grade.
4. The product has connectors and connectors with cables.
5. Shielding is optional: non shielding, shielding and grounding.
6. Connector technology suitable for various occasions.
7. It can be paired with the same series of connectors in the market.

产品优势

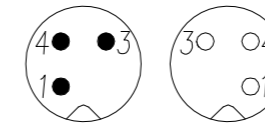
1. 产品外形尺寸较小，占用空间有限。
2. 螺纹旋扭对插连接，电气性能稳定，可用于持续冲击，振动等应用环境。
3. 密封性能可达IP67防护等级。
4. 产品有连接器与带线缆连接器可选。
5. 屏蔽性可选：非屏蔽、屏蔽、接地等三种。
6. 适用于各种场合的连接技术。
7. 可与市场同行同系列连接器互配对插。
8. 产品符合IEC61076, 产品种类多，可自行选择应用。



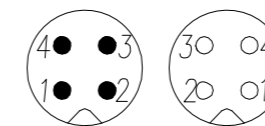
Circular M5 connector is waterproof, oil resistant, cold resistant, stable performance, efficient and fast connection. It is widely used in automobile sensor connecting line, photoelectric switch, proximity switch, industrial automatic robot sensor and various industrial 4.0 integrated harness wiring systems. Wanjie can provide customers with various innovative equipment connectors and connector cables.

圆形M5连接器防水，耐油，耐寒，性能稳定，高效快速连接，广泛用于汽车传感器，连接线，光电开关，接近开关，工业自动化，机器人传感器和各种工业4.0集成线束布线系统中，万捷可为客户配合提供各种不同创新型设备连接器及连接器线缆。

M5 Male/Female Contact layout:(M5公/母Pin位分布图)



3Pin A-Coding公母



4Pin A-Coding公母

M5 公母Pin位分布图

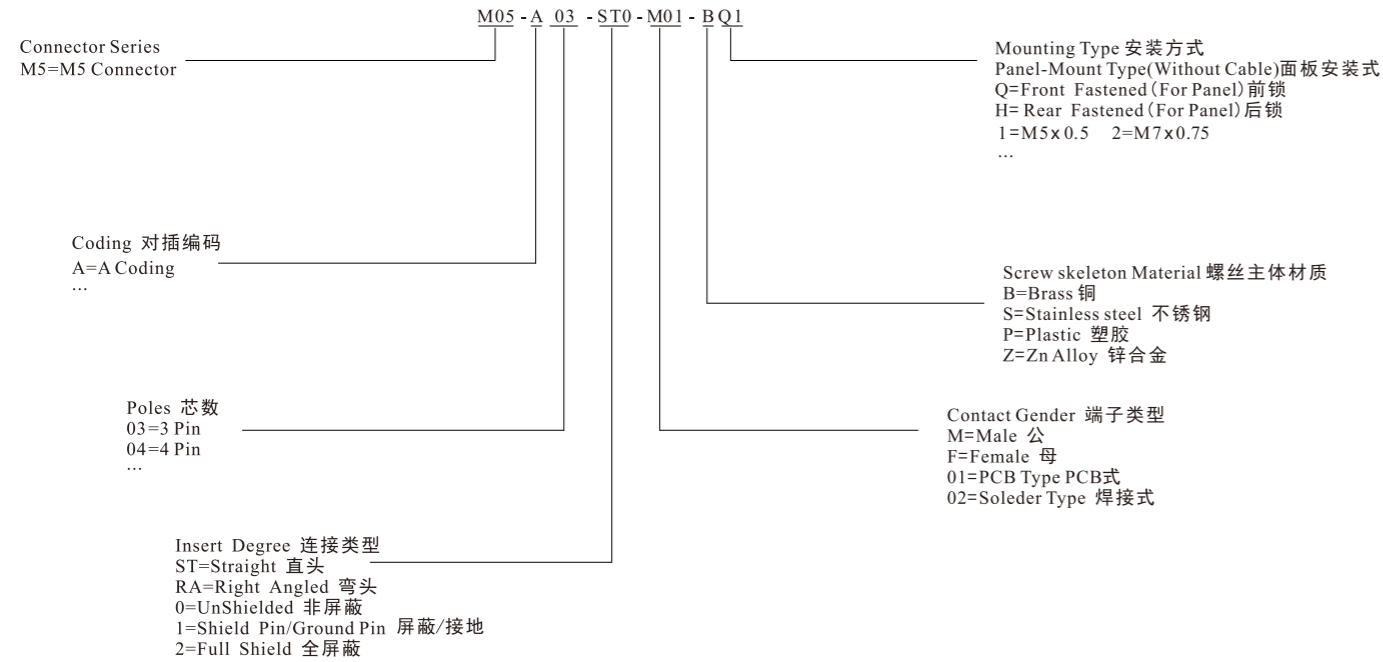
PIN位	3PIN A-Coding	
	1	BN(棕)
NC		
3	BU(蓝)	
4	BK(黑)	

M5 公母Pin位分布图

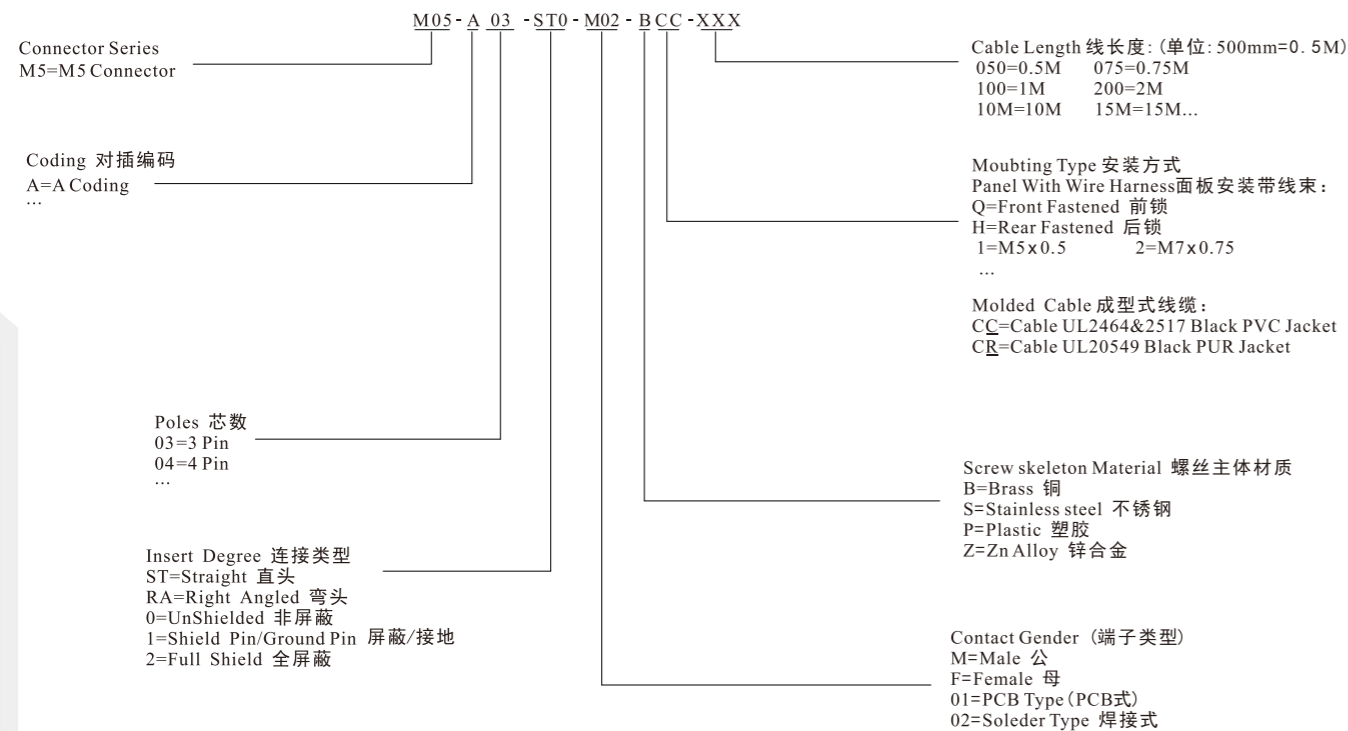
PIN位	4PIN A-Coding	
	1	BN(棕)
2	WH(白)	
3	BU(蓝)	
4	BK(黑)	

How To Find The Part Number You Need 如何订购所需的产品编号

M5 Connector Series Without Cable:
M5 连接器系列:



M5 Connector Series Aeries Assembly(With Cable Assembly)
M5 连接器带线缆成品系列:



M5产品目录

PRODUCTS WORLD

诚邀国内外行业精英, 设立研发中心, 建立技术创新平台。基于此研发和技术创新平台, 公司对市场做出更快速的反应、集成多方资源, 为国内外客户提供最直接、最优质的技术支持等服务。

43/46

成型式 Molded Cables

47/50

面板式焊线式 Panel Solder Wire

51/54

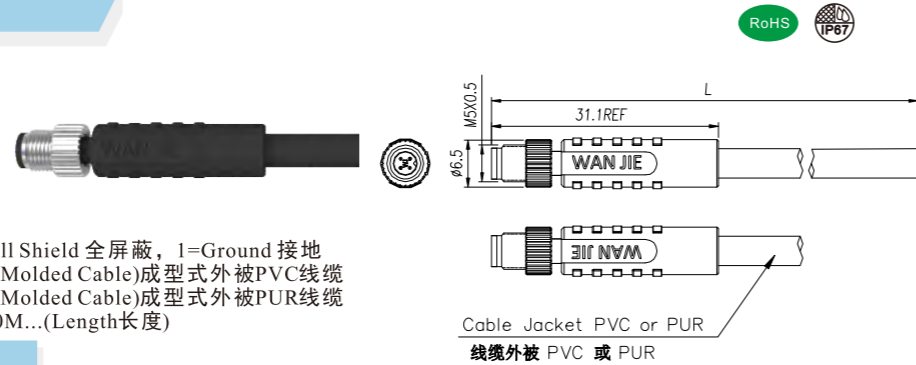
面板式焊接型 Panel Solder

55/58

面板式PCB Panel PCB

M5 Male Molded Cables, Straight
M5 公头成型式线缆, 直头

Connector Series 连接器系列: M5
Gender 类型: Male 公
Coding 编码: A
Locking Type 装配方式: Fix Screw 锁螺丝
Mounting Type 安装类型: Straight 直头
Part No 产品编号: M05-A**-ST0-M02-BC*-XXX
A:A Coding(A扣)
**:03,04(Pin数)
ST0:0=Unshielded 非屏蔽, 2=Full Shield 全屏蔽, 1=Ground 接地
BC*:BCC=Cable Jacket PVC(For Molded Cable)成型式外被PVC线缆
BC*:BCR=Cable Jacket PUR(For Molded Cable)成型式外被PUR线缆
XXX:050=0.5M,100=1M,10M=10M...(Length长度)



General Information 基本信息

Technical data 技术参数

Standard 标准: IEC61076-2-105
Ambient Temperature 工作温度: -25°C~+80°C
Insulation Resistance 绝缘电阻: ≥100MΩ
Contact Resistance 接触电阻: ≤5mΩ
IP Class 防护等级: IP67
Mating Endurance 机械寿命: >100 Mating Cycles

Material Data 材质说明

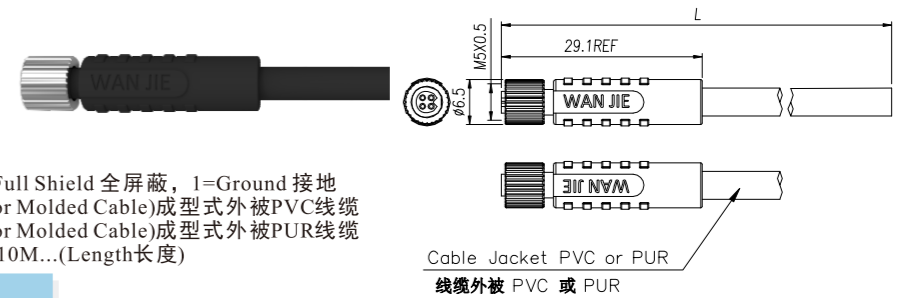
Connector Carriers 胶芯材料: PA
Connector Contacts 接触端子: Copper Alloy With Gold Plated 铜镀金
Connector Nut/Screw 螺母/螺丝: Copper Alloy With Nickel Plated 铜镀镍
Connector Overmold 连接器外模: TPU
Shielding 屏蔽: Unshielded 非屏蔽/Shielded 屏蔽

Electrical Data & Mechanical Data 电气参数&机械参数

Contacts Pin数	Available Coding 防插错编码	Rated Current 额定电流	Voltage 电压		Wire Range 接线范围		Cable Jacket 线缆外被	Part NO.产品编号
			AC	DC	AWG	mm ²		
03Pins	A-Coding	1A	60V	60V	26	0.14	PVC	M05-A03-ST*-M02-BCC-XXX
							PUR	M05-A03-ST*-M02-BCR-XXX
04Pins	A-Coding	1A	60V	60V	26	0.14	PVC	M05-A04-ST*-M02-BCC-XXX
							PUR	M05-A04-ST*-M02-BCR-XXX

M5 Female Molded Cables, Straight
M5 母头成型式线缆, 直头

Connector Series 连接器系列: M5
Gender 类型: Female 母
Coding 编码: A
Locking Type 装配方式: Fix Screw 锁螺丝
Mounting Type 安装类型: Straight 直头
Part No 产品编号: M05-A**-ST0-F02-BC*-XXX
A:A Coding(A扣)
**:03,04(Pin数)
ST0:0=Unshielded 非屏蔽, 2=Full Shield 全屏蔽, 1=Ground 接地
BC*:BCC=Cable Jacket PVC(For Molded Cable)成型式外被PVC线缆
BC*:BCR=Cable Jacket PUR(For Molded Cable)成型式外被PUR线缆
XXX:050=0.5M,100=1M,10M=10M...(Length长度)



General Information 基本信息

Technical data 技术参数

Standard 标准: IEC61076-2-105
Ambient Temperature 工作温度: -25°C~+80°C
Insulation Resistance 绝缘电阻: ≥100MΩ
Contact Resistance 接触电阻: ≤5mΩ
IP Class 防护等级: IP67
Mating Endurance 机械寿命: >100 Mating Cycles

Material Data 材质说明

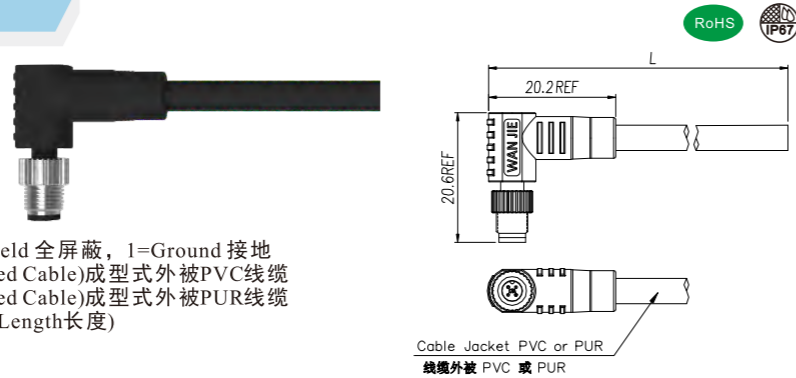
Connector Carriers 胶芯材料: PA
Connector Contacts 接触端子: Copper Alloy With Gold Plated 铜镀金
Connector Nut/Screw 螺母/螺丝: Copper Alloy With Nickel Plated 铜镀镍
Connector Overmold 连接器外模: TPU
Seal/O-Ring 密封胶圈: FKM 氟橡胶
Shielding 屏蔽: Unshielded 非屏蔽/Shielded 屏蔽

Electrical Data & Mechanical Data 电气参数&机械参数

Contacts Pin数	Available Coding 防插错编码	Rated Current 额定电流	Voltage 电压		Wire Range 接线范围		Cable Jacket 线缆外被	Part NO.产品编号
			AC	DC	AWG	mm ²		
03Pins	A-Coding	1A	60V	60V	26	0.14	PVC	M05-A03-ST*-F02-BCC-XXX
							PUR	M05-A03-ST*-F02-BCR-XXX
04Pins	A-Coding	1A	60V	60V	26	0.14	PVC	M05-A04-ST*-F02-BCC-XXX
							PUR	M05-A04-ST*-F02-BCR-XXX

M5 Male Molded Cables, Angled
M5 公头成型式线缆, 弯头

Connector Series 连接器系列: M5
Gender 类型: Male 公
Coding 编码: A
Locking Type 装配方式: Fix Screw 锁螺丝
Mounting Type 安装类型: Angled 弯头
Part No 产品编号: M05-A**-RA0-M02-BC*-XXX
A:A Coding(A扣)
**:03,04(Pin数)
RA0:0=Unshielded 非屏蔽, 2=Full Shield 全屏蔽, 1=Ground 接地
BC*:BCC=Cable Jacket PVC(For Molded Cable)成型式外被PVC线缆
BC*:BCR=Cable Jacket PUR(For Molded Cable)成型式外被PUR线缆
XXX:050=0.5M,100=1M,10M=10M...(Length长度)



General Information 基本信息

Technical data 技术参数

Standard 标准: IEC61076-2-105
Ambient Temperature 工作温度: -25°C~+80°C
Insulation Resistance 绝缘电阻: ≥100MΩ
Contact Resistance 接触电阻: ≤5mΩ
IP Class 防护等级: IP67
Mating Endurance 机械寿命: >100 Mating Cycles

Material Data 材质说明

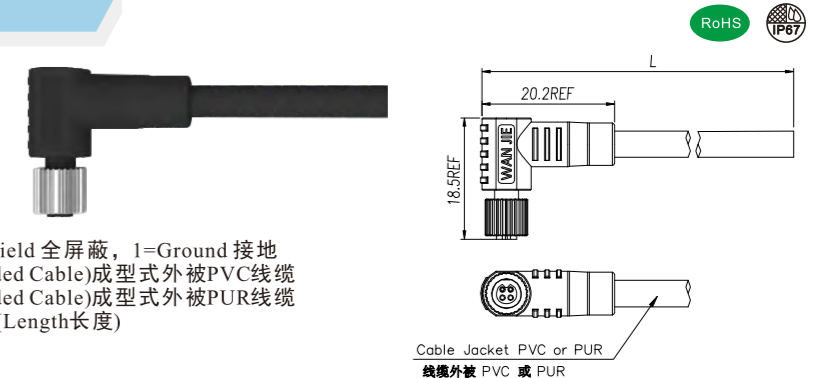
Connector Carriers 胶芯材料: PA
Connector Contacts 接触端子: Copper Alloy With Gold Plated 铜镀金
Connector Nut/Screw 螺母/螺丝: Copper Alloy With Nickel Plated 铜镀镍
Connector Overmold 连接器外模: TPU
Shielding 屏蔽: Unshielded 非屏蔽/Shielded 屏蔽

Electrical Data & Mechanical Data 电气参数&机械参数

Contacts Pin数	Available Coding 防插错编码	Rated Current 额定电流	Voltage 电压		Wire Range 接线范围		Cable Jacket 线缆外被	Part NO.产品编号
			AC	DC	AWG	mm ²		
03Pins	A-Coding	1A	60V	60V	26	0.14	PVC	M05-A03-RA*-M02-BCC-XXX
							PUR	M05-A03-RA*-M02-BCR-XXX
04Pins	A-Coding	1A	60V	60V	26	0.14	PVC	M05-A04-RA*-M02-BCC-XXX
							PUR	M05-A04-RA*-M02-BCR-XXX

M5 Female Molded Cables, Angled
M5 母头成型式线缆, 弯头

Connector Series 连接器系列: M5
Gender 类型: Female 母
Coding 编码: A
Locking Type 装配方式: Fix Screw 锁螺丝
Mounting Type 安装类型: Angled 弯头
Part No 产品编号: M05-A**-RA0-F02-BC*-XXX
A:A Coding(A扣)
**:03,04(Pin数)
RA0:0=Unshielded 非屏蔽, 2=Full Shield 全屏蔽, 1=Ground 接地
BC*:BCC=Cable Jacket PVC(For Molded Cable)成型式外被PVC线缆
BC*:BCR=Cable Jacket PUR(For Molded Cable)成型式外被PUR线缆
XXX:050=0.5M,100=1M,10M=10M...(Length长度)



General Information 基本信息

Technical data 技术参数

Standard 标准: IEC61076-2-105
Ambient Temperature 工作温度: -25°C~+80°C
Insulation Resistance 绝缘电阻: ≥100MΩ
Contact Resistance 接触电阻: ≤5mΩ
IP Class 防护等级: IP67
Mating Endurance 机械寿命: >100 Mating Cycles

Material Data 材质说明

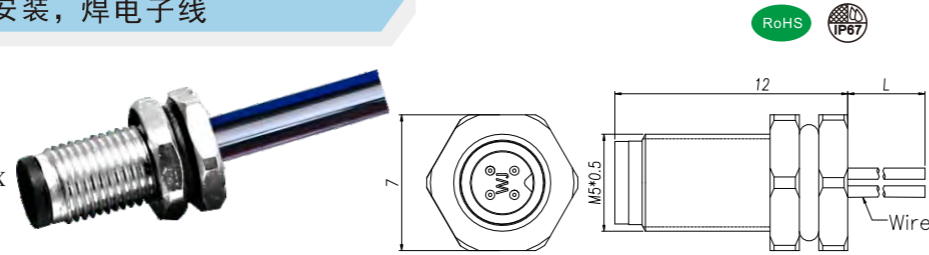
Connector Carriers 胶芯材料: PA
Connector Contacts 接触端子: Copper Alloy With Gold Plated 铜镀金
Connector Nut/Screw 螺母/螺丝: Copper Alloy With Nickel Plated 铜镀镍
Connector Overmold 连接器外模: TPU
Seal/O-Ring 密封胶圈: FKM 氟橡胶
Shielding 屏蔽: Unshielded 非屏蔽/Shielded 屏蔽

Electrical Data & Mechanical Data 电气参数&机械参数

Contacts Pin数	Available Coding 防插错编码	Rated Current 额定电流	Voltage 电压		Wire Range 接线范围		Cable Jacket 线缆外被	Part NO.产品编号
			AC	DC	AWG	mm ²		
03Pins	A-Coding	1A	60V	60V	26	0.14	PVC	M05-A03-RA*-F02-BCC-XXX
							PUR	M05-A03-RA*-F02-BCR-XXX
04Pins	A-Coding	1A	60V	60V	26	0.14	PVC	M05-A04-RA*-F02-BCC-XXX
							PUR	M05-A04-RA*-F02-BCR-XXX

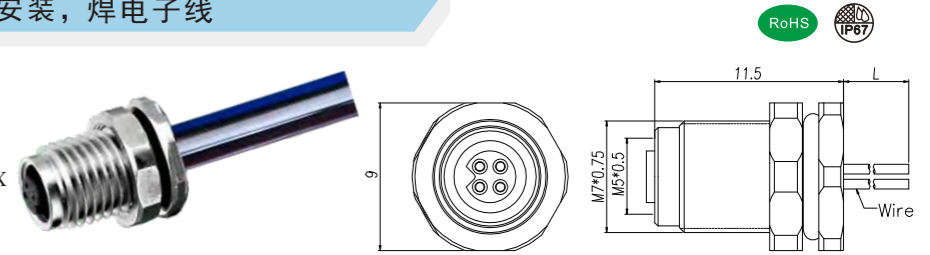
M5 Male Panel Mount, Solder Type, Front Fastened With Wires
M5 公头面板式，焊接型，前锁安装，焊电子线

Connector Series 连接器系列: M5
Gender 类型: Male 公
Coding 编码: A
Locking Type 装配方式: Fix Screw 锁螺丝
Mounting Type 安装类型: Front Fastened 前锁
Part No 产品编号: M05-A** -ST0-M02-BQ1-XXX
A:A,B Coding(A, B扣)
**:03,04 (Pin数)
BQ1:1=M5x0.5(OD1)
XXX:050=0.5M,100=1M,10M=10M...(Length长度)



M5 Female Panel Mount, Solder Type, Front Fastened With Wires
M5 母头面板式，焊接型，前锁安装，焊电子线

Connector Series 连接器系列: M5
Gender 类型: Female 母
Coding 编码: A
Locking Type 装配方式: Fix Screw 锁螺丝
Mounting Type 安装类型: Front Fastened 前锁
Part No 产品编号: M05-A** -ST0-F02-BQ2-XXX
A:A,B Coding(A, B扣)
**:03,04 (Pin数)
BQ2:2=M7x0.75(OD2)
XXX:050=0.5M,100=1M,10M=10M...(Length长度)



General Information 基本信息

Technical data 技术参数

Standard 标准: IEC61076-2-105
Ambient Temperature 工作温度: -25°C~+85°C
Insulation Resistance 绝缘电阻: ≥100MΩ
Contact Resistance 接触电阻: ≤5mΩ
IP Class 防护等级: IP67
Mating Endurance 机械寿命: >100 Mating Cycles

Material Data 材质说明

Connector Carriers 胶芯材料: PA
Connector Contacts 接触端子: Copper Alloy With Gold Plated 铜镀金
Connector Nut/Screw 螺母/螺丝: Copper Alloy With Nickel Plated 铜镀镍
Seal/O-Ring 密封胶圈: FKM氟橡胶
Shielding 屏蔽: Unshielded 非屏蔽

Electrical Data & Mechanical Data 电气参数&机械参数

Contacts Pin数	Available Coding 防插错编码	Rated Current 额定电流	Voltage 电压		Wire Range 接线范围		Part NO.产品编号
			AC	DC	AWG	mm ²	
03Pins	A-Coding	1A	60V	60V	26	0.14	M05-A03-ST0-M02-BQ1-XXX
04Pins	A-Coding	1A	60V	60V	26	0.14	M05-A04-ST0-M02-BQ1-XXX

M5 Connector



Panel cut-out 安装尺寸
M5X0.5
OD1: 5.1^{+0.1}₀

General Information 基本信息

Technical data 技术参数

Standard 标准: IEC61076-2-105
Ambient Temperature 工作温度: -25°C~+85°C
Insulation Resistance 绝缘电阻: ≥100MΩ
Contact Resistance 接触电阻: ≤5mΩ
IP Class 防护等级: IP67
Mating Endurance 机械寿命: >100 Mating Cycles

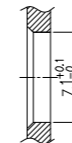
Material Data 材质说明

Connector Carriers 胶芯材料: PA
Connector Contacts 接触端子: Copper Alloy With Gold Plated 铜镀金
Connector Nut/Screw 螺母/螺丝: Copper Alloy With Nickel Plated 铜镀镍
Seal/O-Ring 密封胶圈: FKM氟橡胶
Shielding 屏蔽: Unshielded 非屏蔽

Electrical Data & Mechanical Data 电气参数&机械参数

Contacts Pin数	Available Coding 防插错编码	Rated Current 额定电流	Voltage 电压		Wire Range 接线范围		Part NO.产品编号
			AC	DC	AWG	mm ²	
03Pins	A-Coding	1A	60V	60V	26	0.14	M05-A03-ST0-F02-BQ2-XXX
04Pins	A-Coding	1A	60V	60V	26	0.14	M05-A04-ST0-F02-BQ2-XXX

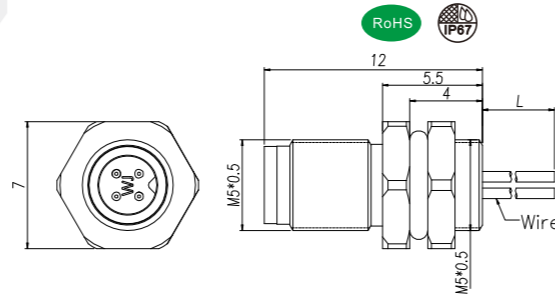
M5 Connector



Panel cut-out 安装尺寸
M7X0.75
OD1: 7.1^{+0.1}₀

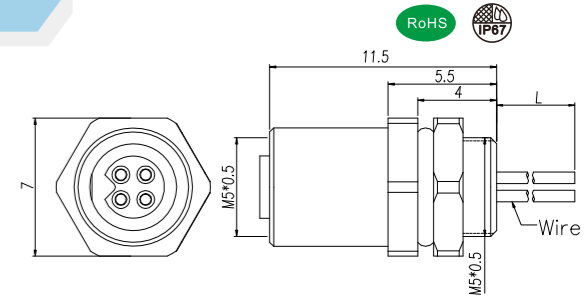
M5 Male Panel Mount, Solder Type, Rear Fastened With Wires
M5 公头面板式，焊接型，后锁安装，焊电子线

Connector Series 连接器系列: M5
Gender 类型: Male 公
Coding 编码: A
Locking Type 装配方式: Fix Screw 锁螺丝
Mounting Type 安装类型: Rear Fastened 后锁
Part No 产品编号: M05-A** -ST0-M02-BH1-XXX
A:A,B Coding(A,B扣)
**:03,04 (Pin数)
BH1:1=M5x0.5(OD1)
XXX:050=0.5M,100=1M,10M=10M...(Length长度)



M5 Female Panel Mount, Solder Type, Rear Fastened With Wires
M5 母头面板式，焊接型，后锁安装，焊电子线

Connector Series 连接器系列: M5
Gender 类型: Female 母
Coding 编码: A
Locking Type 装配方式: Fix Screw 锁螺丝
Mounting Type 安装类型: Rear Fastened 后锁
Part No 产品编号: M05-A** -ST0-F02-BH1-XXX
A:A,B Coding(A,B扣)
**:03,04 (Pin数)
BH1:1=M5x0.5(OD1)
XXX:050=0.5M,100=1M,10M=10M...(Length长度)



General Information 基本信息

Technical data 技术参数

Standard 标准: IEC61076-2-105
Ambient Temperature 工作温度: -25°C~+85°C
Insulation Resistance 绝缘电阻: $\geq 100M\Omega$
Contact Resistance 接触电阻: $\leq 5m\Omega$
IP Class 防护等级: IP67
Mating Endurance 机械寿命: >100 Mating Cycles

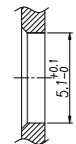
Material Data 材质说明

Connector Carriers 胶芯材料: PA
Connector Contacts 接触端子: Copper Alloy With Gold Plated 铜镀金
Connector Nut/Screw 螺母/螺丝: Copper Alloy With Nickel Plated 铜镀镍
Seal/O-Ring 密封胶圈: FKM氟橡胶
Shielding 屏蔽: Unshielded 非屏蔽

Electrical Data & Mechanical Data 电气参数&机械参数

Contacts Pin数	Available Coding 防插错编码	Rated Current 额定电流	Voltage 电压		Wire Range 接线范围		Part NO.产品编号
			AC	DC	AWG	mm ²	
03Pins	A-Coding	1A	60V	60V	26	0.14	M05-A03-ST0-M02-BH1-XXX
04Pins	A-Coding	1A	60V	60V	26	0.14	M05-A04-ST0-M02-BH1-XXX

M5 Connector



Panel cut-out 安装尺寸
M5X0.5
OD1: 5.1^{+0.1}₀

General Information 基本信息

Technical data 技术参数

Standard 标准: IEC61076-2-105
Ambient Temperature 工作温度: -25°C~+85°C
Insulation Resistance 绝缘电阻: $\geq 100M\Omega$
Contact Resistance 接触电阻: $\leq 5m\Omega$
IP Class 防护等级: IP67
Mating Endurance 机械寿命: >100 Mating Cycles

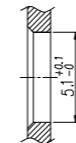
Material Data 材质说明

Connector Carriers 胶芯材料: PA
Connector Contacts 接触端子: Copper Alloy With Gold Plated 铜镀金
Connector Nut/Screw 螺母/螺丝: Copper Alloy With Nickel Plated 铜镀镍
Seal/O-Ring 密封胶圈: FKM氟橡胶
Shielding 屏蔽: Unshielded 非屏蔽

Electrical Data & Mechanical Data 电气参数&机械参数

Contacts Pin数	Available Coding 防插错编码	Rated Current 额定电流	Voltage 电压		Wire Range 接线范围		Part NO.产品编号
			AC	DC	AWG	mm ²	
03Pins	A-Coding	1A	60V	60V	26	0.14	M05-A03-ST0-F02-BH1-XXX
04Pins	A-Coding	1A	60V	60V	26	0.14	M05-A04-ST0-F02-BH1-XXX

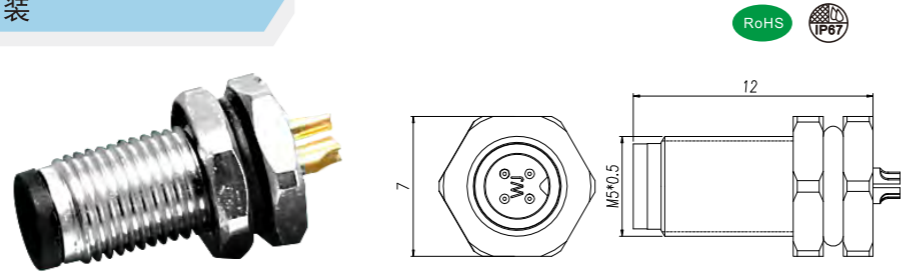
M5 Connector



Panel cut-out 安装尺寸
M5X0.5
OD1: 5.1^{+0.1}₀

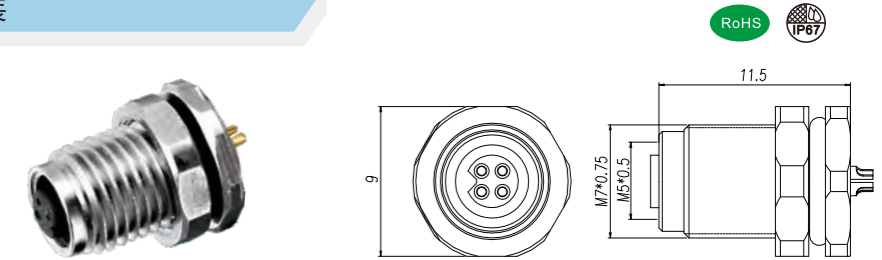
M5 Male Panel Mount, Solder Type, Front Fastened
M5 公头面板式，焊接型，前锁安装

Connector Series 连接器系列: M5
Gender 类型: Male 公
Coding 编码: A
Locking Type 装配方式: Fix Screw 锁螺丝
Mounting Type 安装类型: Front Fastened 前锁
Part No 产品编号: M05-A** -ST0-M02-BQ1
A:A,B Coding(A, B扣)
**:03,04 (Pin数)
BQ1:1=M5x0.5(OD1)



M5 Female Panel Mount, Solder Type, Front Fastened
M5 母头面板式，焊接型，前锁安装

Connector Series 连接器系列: M5
Gender 类型: Female 母
Coding 编码: A
Locking Type 装配方式: Fix Screw 锁螺丝
Mounting Type 安装类型: Front Fastened 前锁
Part No 产品编号: M05-A** -ST0-F02-BQ2
A:A,B Coding(A, B扣)
**:03,04 (Pin数)
BQ2:2=M7x0.75(OD2)



General Information 基本信息

Technical data 技术参数

Standard 标准: IEC61076-2-105
Ambient Temperature 工作温度: -25°C~+85°C
Insulation Resistance 绝缘电阻: ≥100MΩ
Contact Resistance 接触电阻: ≤5mΩ
IP Class 防护等级: IP67
Mating Endurance 机械寿命: >100 Mating Cycles

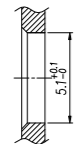
Material Data 材质说明

Connector Carriers 胶芯材料: PA
Connector Contacts 接触端子: Copper Alloy With Gold Plated 铜镀金
Connector Nut/Screw 螺母/螺丝: Copper Alloy With Nickel Plated 铜镀镍
Seal/O-Ring 密封胶圈: FKM氟橡胶
Shielding 屏蔽: Unshielded 非屏蔽

Electrical Data & Mechanical Data 电气参数&机械参数

Contacts Pin数	Available Coding 防插错编码	Rated Current 额定电流	Voltage 电压		Wire Range 接线范围		Part NO.产品编号
			AC	DC	AWG	mm ²	
03Pins	A-Coding	1A	60V	60V	26	0.14	M05-A03-ST0-M02-BQ1
04Pins	A-Coding	1A	60V	60V	26	0.14	M05-A04-ST0-M02-BQ1

M5 Connector



Panel cut-out 安装尺寸
M5X0.5
OD1: 5.1±0.1

General Information 基本信息

Technical data 技术参数

Standard 标准: IEC61076-2-105
Ambient Temperature 工作温度: -25°C~+85°C
Insulation Resistance 绝缘电阻: ≥100MΩ
Contact Resistance 接触电阻: ≤5mΩ
IP Class 防护等级: IP67
Mating Endurance 机械寿命: >100 Mating Cycles

Material Data 材质说明

Connector Carriers 胶芯材料: PA
Connector Contacts 接触端子: Copper Alloy With Gold Plated 铜镀金
Connector Nut/Screw 螺母/螺丝: Copper Alloy With Nickel Plated 铜镀镍
Seal/O-Ring 密封胶圈: FKM氟橡胶
Shielding 屏蔽: Unshielded 非屏蔽

Electrical Data & Mechanical Data 电气参数&机械参数

Contacts Pin数	Available Coding 防插错编码	Rated Current 额定电流	Voltage 电压		Wire Range 接线范围		Part NO.产品编号
			AC	DC	AWG	mm ²	
03Pins	A-Coding	1A	60V	60V	26	0.14	M05-A03-ST0-F02-BQ2
04Pins	A-Coding	1A	60V	60V	26	0.14	M05-A04-ST0-F02-BQ2

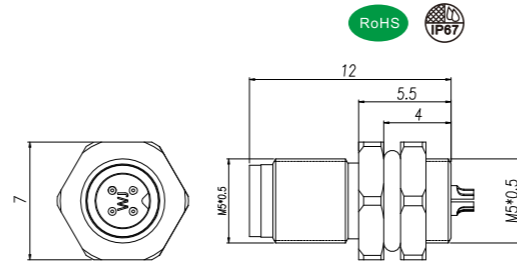
M5 Connector



Panel cut-out 安装尺寸
M7X0.75
OD2: 7.1±0.1

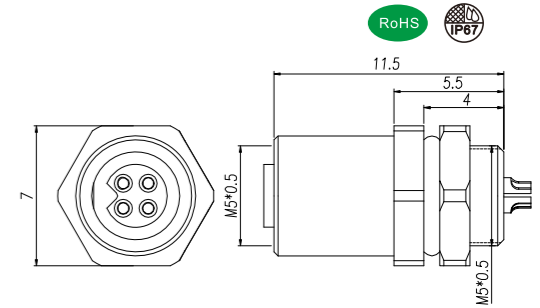
M5 Male Panel Mount, Solder Type, Rear Fastened
M5 公头面板式，焊接型，后锁安装

Connector Series 连接器系列: M5
Gender 类型: Male 公
Coding 编码: A
Locking Type 装配方式: Fix Screw 锁螺丝
Mounting Type 安装类型: Rear Fastened 后锁
Part No 产品编号: M05-A** -ST0-M02-BH1
A:A,B Coding(A,B扣)
**:03,04 (Pin数)
BH1:1=M5x0.5(OD1)



M5 Female Panel Mount, Solder Type, Rear Fastened
M5 母头面板式，焊接型，后锁安装

Connector Series 连接器系列: M5
Gender 类型: Female 母
Coding 编码: A
Locking Type 装配方式: Fix Screw 锁螺丝
Mounting Type 安装类型: Rear Fastened 后锁
Part No 产品编号: M05-A** -ST0-F02-BH1
A:A,B Coding(A,B扣)
**:03,04 (Pin数)
BH1:1=M5x0.5(OD1)



General Information 基本信息

Technical data 技术参数

Standard 标准: IEC61076-2-105
Ambient Temperature 工作温度: -25°C~+85°C
Insulation Resistance 绝缘电阻: $\geq 100M\Omega$
Contact Resistance 接触电阻: $\leq 5m\Omega$
IP Class 防护等级: IP67
Mating Endurance 机械寿命: >100 Mating Cycles

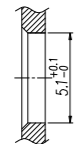
Material Data 材质说明

Connector Carriers 胶芯材料: PA
Connector Contacts 接触端子: Copper Alloy With Gold Plated 铜镀金
Connector Nut/Screw 螺母/螺丝: Copper Alloy With Nickel Plated 铜镀镍
Seal/O-Ring 密封胶圈: FKM氟橡胶
Shielding 屏蔽: Unshielded 非屏蔽

Electrical Data & Mechanical Data 电气参数&机械参数

Contacts Pin数	Available Coding 防插错编码	Rated Current 额定电流	Voltage 电压		Wire Range 接线范围		Part NO.产品编号
			AC	DC	AWG	mm ²	
03Pins	A-Coding	1A	60V	60V	26	0.14	M05-A03-ST0-M02-BH1
04Pins	A-Coding	1A	60V	60V	26	0.14	M05-A04-ST0-M02-BH1

M5 Connector



Panel cut-out 安装尺寸
M5X0.5
OD1: 5.1 \pm ₀^{0.1}

General Information 基本信息

Technical data 技术参数

Standard 标准: IEC61076-2-105
Ambient Temperature 工作温度: -25°C~+85°C
Insulation Resistance 绝缘电阻: $\geq 100M\Omega$
Contact Resistance 接触电阻: $\leq 5m\Omega$
IP Class 防护等级: IP67
Mating Endurance 机械寿命: >100 Mating Cycles

Material Data 材质说明

Connector Carriers 胶芯材料: PA
Connector Contacts 接触端子: Copper Alloy With Gold Plated 铜镀金
Connector Nut/Screw 螺母/螺丝: Copper Alloy With Nickel Plated 铜镀镍
Seal/O-Ring 密封胶圈: FKM氟橡胶
Shielding 屏蔽: Unshielded 非屏蔽

Electrical Data & Mechanical Data 电气参数&机械参数

Contacts Pin数	Available Coding 防插错编码	Rated Current 额定电流	Voltage 电压		Wire Range 接线范围		Part NO.产品编号
			AC	DC	AWG	mm ²	
03Pins	A-Coding	1A	60V	60V	26	0.14	M05-A03-ST0-F02-BH1
04Pins	A-Coding	1A	60V	60V	26	0.14	M05-A04-ST0-F02-BH1

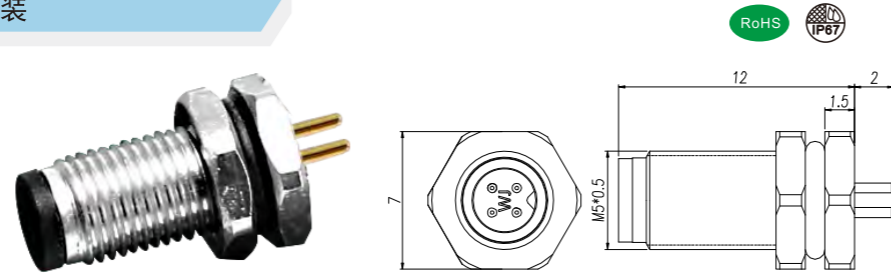
M5 Connector



Panel cut-out 安装尺寸
M5X0.5
OD1: 5.1 \pm ₀^{0.1}

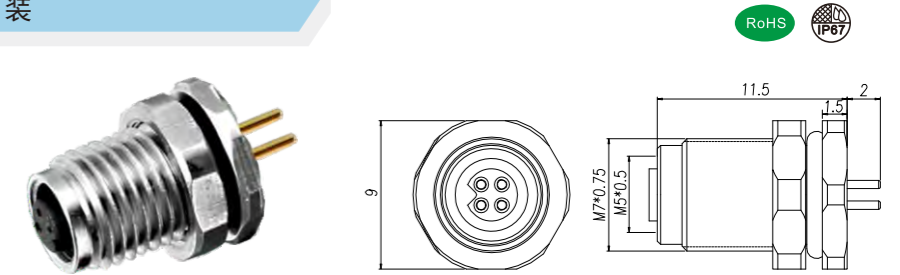
M5 Male Panel Mount, Solder Type, Front Fastened
M5 公头面板式, PCB型, 前锁安装

Connector Series 连接器系列: M5
Gender 类型: Male 公
Coding 编码: A
Locking Type 装配方式: Fix Screw 锁螺丝
Mounting Type 安装类型: Front Fastened 前锁
Part No 产品编号: M05-A**-ST0-M01-BQ1
A:A Coding(A扣)
**:.03,04(Pin数)
BQ1:1=M5x0.5(OD1)



M5 Female Panel Mount, Solder Type, Front Fastened
M5 母头面板式, PCB型, 前锁安装

Connector Series 连接器系列: M5
Gender 类型: Female 母
Coding 编码: A
Locking Type 装配方式: Fix Screw 锁螺丝
Mounting Type 安装类型: Front Fastened 前锁
Part No 产品编号: M05-A**-ST0-F01-BQ2
A:A Coding(A扣)
**:.03,04(Pin数)
BQ2:2=M7x0.75(OD2)



General Information 基本信息

Technical data 技术参数

Standard 标准: IEC61076-2-105
Ambient Temperature 工作温度: -25°C~+85°C
Insulation Resistance 绝缘电阻: ≥100MΩ
Contact Resistance 接触电阻: ≤5mΩ
IP Class 防护等级: IP67
Mating Endurance 机械寿命: >100 Mating Cycles

Material Data 材质说明

Connector Carriers 胶芯材料: PA
Connector Contacts 接触端子: Copper Alloy With Gold Plated 铜镀金
Connector Nut/Screw 螺母/螺丝: Copper Alloy With Nickel Plated 铜镀镍
Seal/O-Ring 密封胶圈: FKM氟橡胶
Shielding 屏蔽: Unshielded 非屏蔽

Electrical Data & Mechanical Data 电气参数&机械参数

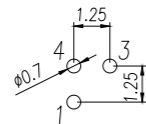
Contacts Pin数	Available Coding 防插错编码	Rated Current 额定电流	Voltage 电压		Contacts Termination 连接方式	Part NO.产品编号
			AC	DC		
03Pins	A-Coding	1A	60V	60V	PCB Version	M05-A03-ST0-M01-BQ1
04Pins	A-Coding	1A	60V	60V	PCB Version	M05-A04-ST0-M01-BQ1

M5 Connector

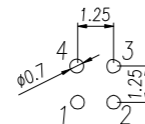
PCB Layout



Panel cut-out 安装尺寸
M5X0.5
OD1: 5.1±0.1



3Pin



4Pin

General Information 基本信息

Technical data 技术参数

Standard 标准: IEC61076-2-105
Ambient Temperature 工作温度: -25°C~+85°C
Insulation Resistance 绝缘电阻: ≥100MΩ
Contact Resistance 接触电阻: ≤5mΩ
IP Class 防护等级: IP67
Mating Endurance 机械寿命: >100 Mating Cycles

Material Data 材质说明

Connector Carriers 胶芯材料: PA
Connector Contacts 接触端子: Copper Alloy With Gold Plated 铜镀金
Connector Nut/Screw 螺母/螺丝: Copper Alloy With Nickel Plated 铜镀镍
Seal/O-Ring 密封胶圈: FKM氟橡胶
Shielding 屏蔽: Unshielded 非屏蔽

Electrical Data & Mechanical Data 电气参数&机械参数

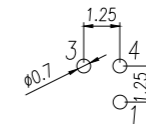
Contacts Pin数	Available Coding 防插错编码	Rated Current 额定电流	Voltage 电压		Contacts Termination 连接方式	Part NO.产品编号
			AC	DC		
03Pins	A-Coding	1A	60V	60V	PCB Version	M05-A03-ST0-F01-BQ2
04Pins	A-Coding	1A	60V	60V	PCB Version	M05-A04-ST0-F01-BQ2

M5 Connector

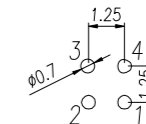
PCB Layout



Panel cut-out 安装尺寸
M7X0.75
OD2: 7.1±0.1



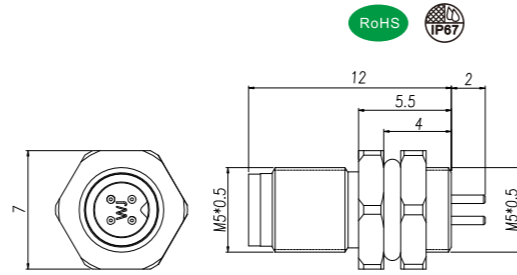
3Pin



4Pin

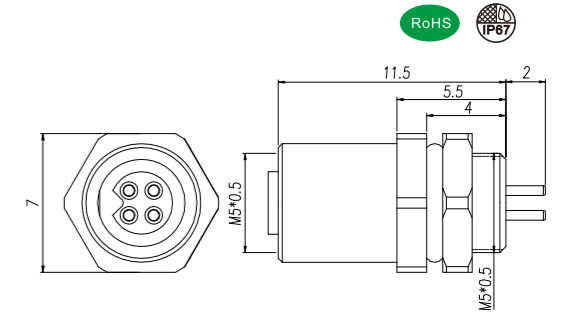
M5 Male Panel Mount, PCB Type, Rear Fastened
M5 公头面板式, PCB型, 后锁安装

Connector Series 连接器系列: M5
Gender 类型: Male 公
Coding 编码: A
Locking Type 装配方式: Fix Screw 锁螺丝
Mounting Type 安装类型: Rear Fastened 后锁
Part No 产品编号: M05-A**-ST0-M01-BH1
A:A Coding(A扣)
**:03,04 (Pin数)
BH1:1=M5x0.5(OD1)



M5 Female Panel Mount, PCB Type, Rear Fastened
M5 母头面板式, PCB型, 后锁安装

Connector Series 连接器系列: M5
Gender 类型: Female 母
Coding 编码: A
Locking Type 装配方式: Fix Screw 锁螺丝
Mounting Type 安装类型: Rear Fastened 后锁
Part No 产品编号: M05-A**-ST0-F01-BH1
A:A Coding(A扣)
**:03,04 (Pin数)
BH1:1=M5x0.5(OD1)



General Information 基本信息

Technical data 技术参数

Standard 标准: IEC61076-2-105
Ambient Temperature 工作温度: -25°C~+85°C
Insulation Resistance 绝缘电阻: ≥100MΩ
Contact Resistance 接触电阻: ≤5mΩ
IP Class 防护等级: IP67
Mating Endurance 机械寿命: >100 Mating Cycles

Material Data 材质说明

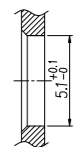
Connector Carriers 胶芯材料: PA
Connector Contacts 接触端子: Copper Alloy With Gold Plated 铜镀金
Connector Nut/Screw 螺母/螺丝: Copper Alloy With Nickel Plated 铜镀镍
Seal/O-Ring 密封胶圈: FKM氟橡胶
Shielding 屏蔽: Unshielded 非屏蔽

Electrical Data & Mechanical Data 电气参数&机械参数

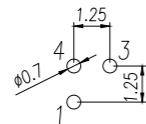
Contacts Pin数	Available Coding 防插错编码	Rated Current 额定电流	Voltage 电压		Contacts Termination 连接方式	Part NO.产品编号
			AC	DC		
03Pins	A-Coding	1A	60V	60V	PCB Version	M05-A03-ST0-M01-BH1
04Pins	A-Coding	1A	60V	60V	PCB Version	M05-A04-ST0-M01-BH1

M5 Connector

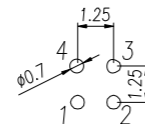
PCB Layout



Panel cut-out 安装尺寸
M5X0.5
OD1: 5.1^{+0.1}₀



3Pin



4Pin

General Information 基本信息

Technical data 技术参数

Standard 标准: IEC61076-2-105
Ambient Temperature 工作温度: -25°C~+85°C
Insulation Resistance 绝缘电阻: ≥100MΩ
Contact Resistance 接触电阻: ≤5mΩ
IP Class 防护等级: IP67
Mating Endurance 机械寿命: >100 Mating Cycles

Material Data 材质说明

Connector Carriers 胶芯材料: PA
Connector Contacts 接触端子: Copper Alloy With Gold Plated 铜镀金
Connector Nut/Screw 螺母/螺丝: Copper Alloy With Nickel Plated 铜镀镍
Seal/O-Ring 密封胶圈: FKM氟橡胶
Shielding 屏蔽: Unshielded 非屏蔽

Electrical Data & Mechanical Data 电气参数&机械参数

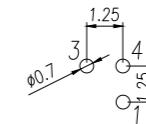
Contacts Pin数	Available Coding 防插错编码	Rated Current 额定电流	Voltage 电压		Contacts Termination 连接方式	Part NO.产品编号
			AC	DC		
03Pins	A-Coding	1A	60V	60V	PCB Version	M05-A03-ST0-F01-BH1
04Pins	A-Coding	1A	60V	60V	PCB Version	M05-A04-ST0-F01-BH1

M5 Connector

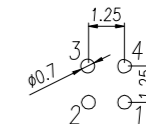
PCB Layout



Panel cut-out 安装尺寸
M5X0.5
OD1: 5.1^{+0.1}₀



3Pin



4Pin