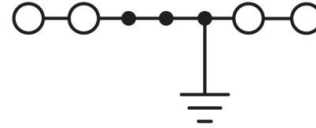


电路图：



目录仅供参考，实际规格依产品工程图为准 版本1.0

技术参数-UL (1059)

耐电压 Withstanding Voltage	2200V/1Min
接线范围 Wire Range	20-8AWG

技术参数-IEC(60947-7-2)

过电压类别 Overvoltage Category	III
污染等级 Contamination Class	3
额定冲击电压 Impulse withstand voltage	8KV

导线截面积 Conductor cross section

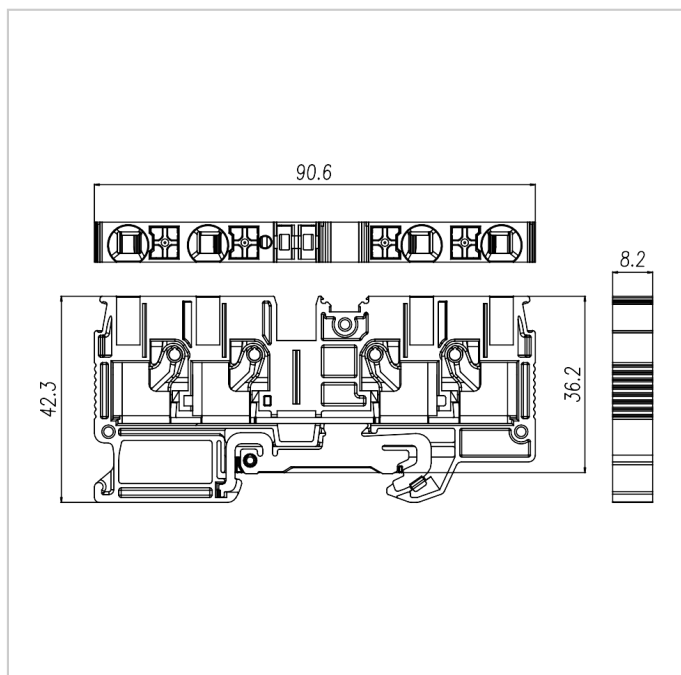
单芯 Solid	0.5-10mm ²
柔性导线 Flexible	0.5-6mm ²
柔性导线带冷压头 Flexible with ferrule	0.5-6mm ²

材料 Material

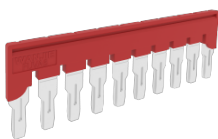
绝缘材料 Insulation Material	PA66
阻燃等级 Flame retardant rating	UL94V-0
导体材料 Conductor Material	Copper alloy

导体表面镀层 Plating of conductor surface	Sn plated
一般参数 Other Data	
长/高/厚 Length/Height/Thickness [mm]	90.6/42.3/8.2
连接点数 Connection Points	4
剥线长度 Stripping Length [mm]	10-12
导轨类型 Type of rail	DIN 35
螺丝/扭矩 Screw/Torque(Max)[N.m]	/
工作温度 Operating temperature [°C]	-40~+105

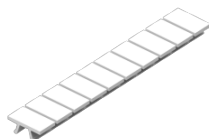
尺寸图



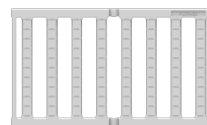
配件



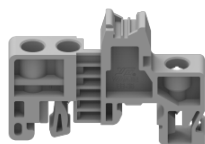
FUVA6-XX



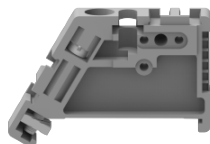
MUV6-10



PUV6-56



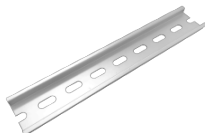
EB-35



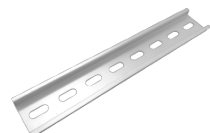
EW-35



DGL2-35x7.5A



DGL2-35x7.5B



DGL2-35x7.5C



DGL2-35x7.5D



DUV6-104



DGS1-35x7.5W4.2x12



DGS1-35x7.5W5.2x15



DGS1-35x7.5W