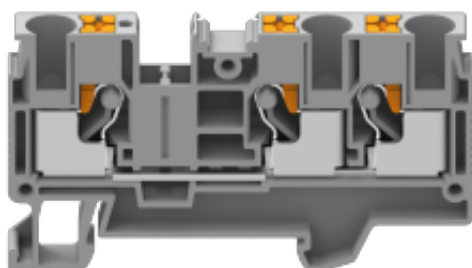


GUV6-103

GUV Push-in terminal block

Download date : 2025-04-28



Electrical Diagram :



For reference only!version1.0

CUL Technical Data (UL1059)

Use Group	B	C	D
Rated Voltage [V]	600	600	600
Rated Current [A]	40	40	5
Withstanding Voltage	2200V/1Min		
Wire Range	20-8AWG		

IEC Technical Data (IEC 60947-7-1)

Overvoltage Category	III
Contamination Class	3
Rated Voltage [V]	1000V
Rated Current [A]	41A
Impulse withstand voltage	8KV

Conductor cross section

Soild	0.5-10mm ²
Flexible	0.5-6mm ²
Flexible with ferrule	0.5-6mm ²

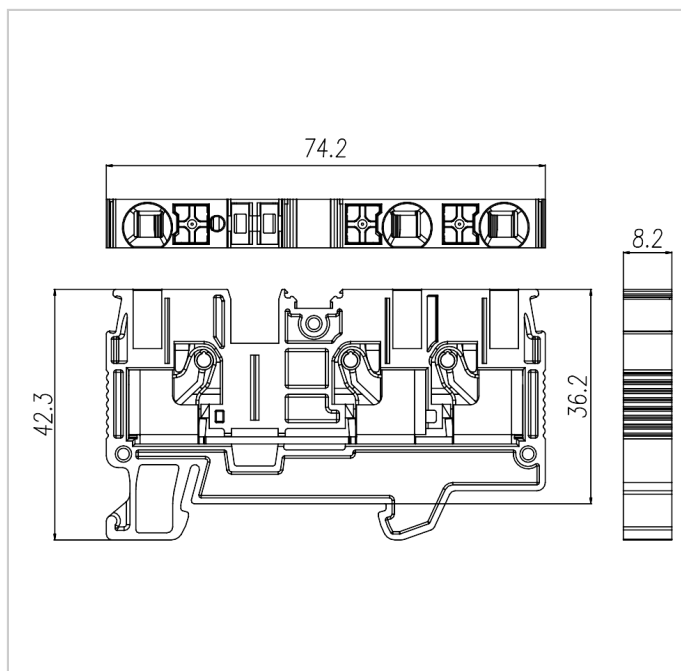
Material

Insulation Material	PA66
Flame retardant rating	UL94V-0
Conductor Material	Copper alloy
Plating of conductor surface	Sn plated

Other Data

Connection Points	3
Stripping Length [mm]	10-12
Type of rail	DIN 35
Screw/Torque(Max)[N.m]	/
Operating temperature [°C]	-40~+105
Length/Height/Thickness [mm]	74.2/42.3/8.2

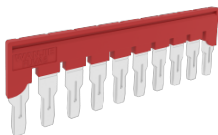
Dimensions



Accessories

GUV6-103

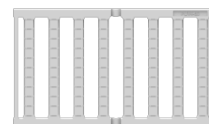
GUV Push-in terminal block



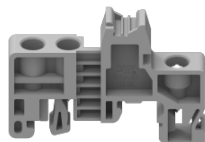
[FUVA6-XX](#)



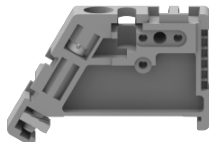
[MUV6-10](#)



[PUV6-56](#)



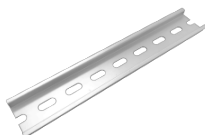
[EB-35](#)



[EW-35](#)



[DGL2-35x7.5A](#)



[DGL2-35x7.5B](#)



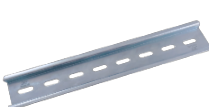
[DGL2-35x7.5C](#)



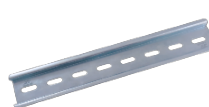
[DGL2-35x7.5D](#)



[DUV6-103](#)



[DGS1-35x7.5W4.2x12](#)



[DGS1-35x7.5W5.2x15](#)



[DGS1-35x7.5W](#)