

PCB connector
 Rated current: 41 A
 Rated voltage: 600 V
 Wire range: 24-8 AWG
 Pitch: 7.62 mm

For reference only!version1.0

UL/CUL

Use Group	B	C	D
Rate Voltage [V]	600	600	-
Rated Current [A]	41	41	-
Wire Range [AWG]		24-8	
Dielectric Voltage-Withstand		2.2KV	

IEC

Overvoltage Category	III	III	II
Contamination Class	3	2	2
Rated Voltage [V]	1000	1000	1000
Rated Current [A]	41	41	41
Impulse withstand voltage [KV]	8	8	6
Conductor cross section[solid/flexible] [mm²]		0.2-6.0	

Material

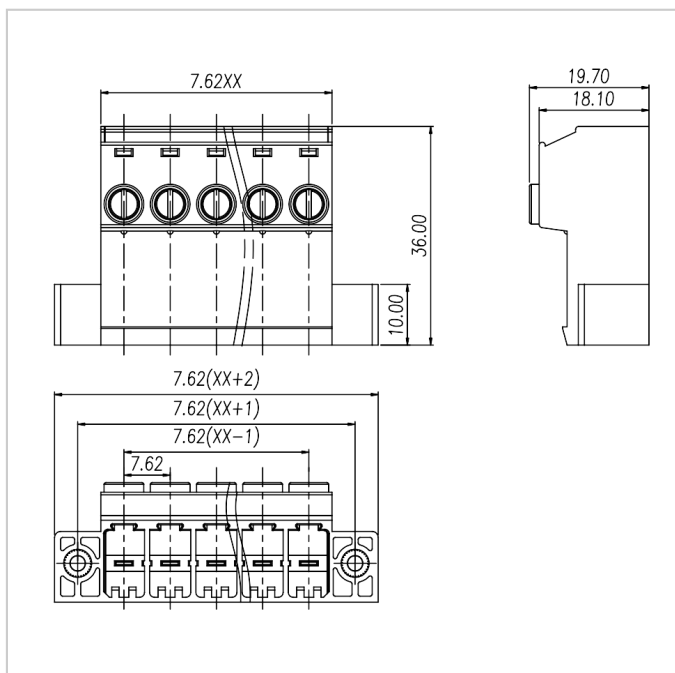
Insulation Material	PA66
---------------------	------

Flame retardant rating	UL94V-0
Conductor Material	Copper alloy
Plating of conductor surface	Sn plated

Other Data

Pitch/Poles [mm]/[P]	7.62/2-12
Stripping Length [mm]	10
Screw/Torque(Max)[N.m]	M3/0.5
Operating temperature [°C]	-40°C~+105°C

Dimensions



Accessories



[WJ3EDGKHM-7.62](#)